



# Beaver Creek Reserve RECYCLER

*A partnership between Beaver Creek Reserve and Eau Claire County*

EARTH PARTY  
SATURDAY,  
APRIL 26

BEAVER CREEK RESERVE

**ATTEND EVENTS**  
**WIN PRIZES**  
**ALL APRIL LONG**



**April is Earth Month!** Whether you are preparing your gardens for spring, finding other ways to be sustainable, exploring new trails or parks, and more... Make April the month to support our planet, get outside, and try something new!

Visit the **Beaver Creek Reserve website** below to register for programs and events. **We will draw names for prizes after every event throughout the month of April!**

DONATE YOUR  
METAL

APRIL 1-30, 2025

DONATIONS WILL BE MATCHED  
POUND FOR POUND



BEAVER CREEK  
EVENT  
CALENDAR



VISIT OUR WEBSITE  
[beavercreekreserve.org](http://beavercreekreserve.org)

STAY  
CONNECTED!



WHAT CAN I  
DONATE?  
LEARN MORE





# NATIVE PLANT SALE



Online store opens

**Wednesday, April 30 at 9:00 a.m.**  
& closes Wednesday, May 7

Order pick-up at the Wise Nature Center:  
**Friday, May 9 & Saturday, May 10**



(715) 877-2212  
www.beavercreekreserve.org  
S1 County Rd K  
Fall Creek, WI 54742

- Pollinator Favorites: attract butterflies, birds, and more!



Over **70 species** of native plants available!

## GARDEN PARTY

**Wednesday, April 23**

**4:00 - 7:00 PM**

**The Brewing Projekt**

1807 N Oxford Ave, Eau Claire

Join us for an evening of flowers & fun! Visit booths from fellow plant & pollinator-friendly businesses and organizations, and hear from speakers on ways you can promote birds, bees, butterflies, and biodiversity in your own backyard! **Bring a small flower pot** as we will be planting seeds to take home.



## EARTH PARTY

**FREE!**

**Saturday, April 26 | 9:00 AM-4:00 PM | Wise Nature Center**



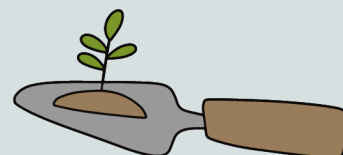
- Bird Banding Demonstration: 7:45 AM-9:00 AM - **please register**
- Voyageurs of Beaver Creek: 9:00 AM-12:00 PM - **open house**
- Bluebird House Building (\$15 per nest box): 12:00 PM-3:00 PM - **please register**

**Other Activities** (available all day): Participate in a trail scavenger hunt, make a native seed bomb craft, and enjoy a "dirt" pudding cup & pink lemonade



(715) 877-2212  
www.beavercreekreserve.org  
S1 County Rd K  
Fall Creek, WI 54742

Visit our  
website for  
more details &  
registration!



# RECYCLING RECAP



☒ **CLEAN**  
☒ **DRY**  
☒ **UNBAGGED**



## KNOW BEFORE YOU THROW, THE UGLY 8

### Plastic Bags

Plastic bags, wraps, and films should never be in curbside recycling. Take to store drop off collections.



### Shredded Paper

This should be discarded through trash or see if your bank has shredding events.



### Yuck

Putting garbage, liquids & food in the recycling makes it difficult and costly to sort clean recyclables.



### Tanks

Tanks & compressed gas cylinders can contain small amounts of fuel and can ignite if damaged.



### Tanglers

Things like cords, hangers, & hoses cause unnecessary damage to equipment and make sorting recycling more expensive.



### Textiles

Clothing, bedding & towels wrap around sorting equipment creating unnecessary maintenance.



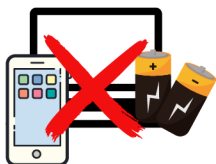
### Sharps

Needles, lancets & syringes are the #1 safety concern for staff. **Do not throw sharps in recycling or trash!** Visit: [www.echealthalliance.org/resources](http://www.echealthalliance.org/resources) for resources on sharps disposal.



### Batteries & Electronics

Batteries & electronics are a fire hazard and should never go in recycling or garbage. **Residents can take most items to First Choice Computer Recycling for free.**



**Learn more about proper waste disposal & recycling at**  
**[www.eauclairecounty.gov/recycling](http://www.eauclairecounty.gov/recycling)**

# Recycling Drop-sites

Drop sites are available for those who reside in the municipalities where the site is located.

**Bridge Creek** S9515 Hwy. 27,  
Augusta (North of Augusta)  
Saturdays, 7:00AM - 12:00PM

**Brunswick** W3020 Mitchell Rd., Eau  
Claire (East of Hwy 37 and Trinity  
Equestrian Center  
Saturdays, 9:00AM - 12:00PM

**Drammen** W6505 County Rd. ZZ,  
Located at Town Shop  
Saturdays, 9:00AM - 12:00PM

**Fairchild** 121 Emery Street, Fairchild  
Wednesdays, 8:00AM - 12:00PM  
Saturdays, 8:00AM - 12:00PM

**Foster** S12785 Wren Rd, Osseo  
(Cty HH & Wren Rd. East of Foster)  
1st & 3rd Saturdays of month  
8:00AM - 12:00PM

**Lincoln** S5555 Green Meadow Rd,  
Fall Creek (South of US Hwy 12)  
2nd & 4th Saturdays of month  
9:00AM - 1:00PM

**Ludington** N956 Town Shop Rd., Fall  
Creek (Intersection of Cty D &  
Town Shop Rd.)  
1st & 3rd Saturdays of month  
8:00AM - 12:00PM

**Pleasant Valley** S10405 Cty Rd. HHI,  
Eleva (Across from Town Hall)  
2nd & 4th Saturdays of month,  
8:00AM - 12:00PM

**Seymour** 8011 Olson Drive, Eau Claire  
Tuesdays, 12:00PM - 4:00PM  
Saturdays, 8:00AM - 12:00PM

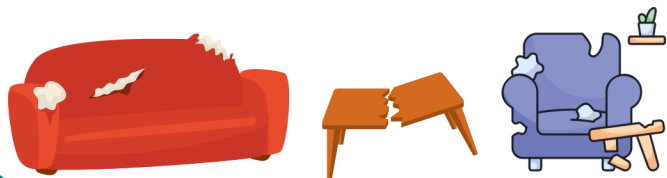
**Union** 1882 White Pine Dr., Eau Claire  
Wednesdays, 1:00PM - 5:00PM  
Saturdays, 9:00AM - 5:00PM

**Wilson** E26936 Cty Rd. G, Stanley  
(intersection of Cty Rd. G & Cty Rd. MM)  
Saturdays, 8:00AM - 12:00PM

## BULK ITEM AND YARD WASTE DISPOSAL

### Bulk Items

- Donate or sell usable items.
- Schedule a pick-up with your curbside hauler for an additional fee.
- Contract with a junk removal company to dispose of items.
- Transport to the Seven Mile Creek Landfill (8001 Olson Drive, Eau Claire) or GFL transfer station (3010 Mondovi Road, Eau Claire). Fees are based on weight.



### Yard Waste

- Mulch or compost yard waste.
- **All County residents** can utilize the City of Eau Claire brush site. Learn more at:  
<https://www.eauclairewi.gov/government/our-divisions/parks-forestry-and-cemetery/forestry/brush-disposal>
- **City of Altoona** residents can utilize the City of Altoona brush site. Learn more at:  
[https://www.ci.altoona.wi.us/residents.phtml/brush\\_disposal/#brush\\_disposal](https://www.ci.altoona.wi.us/residents.phtml/brush_disposal/#brush_disposal)

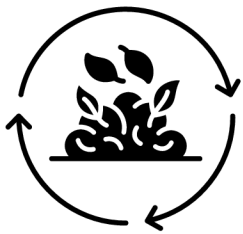


**\*Fall Creek, Augusta, and Village of Fairchild residents should reach out to their municipality for 2025 bulk item and yard waste collection information.**



# A Year of Fighting Waste!

As part of a grant Eau Claire County received through the USDA the county created the Schools Fight Food Waste grant program. This program provided 12-\$1,000 grants to schools in Eau Claire County to implement composting and reduce food waste. This program over 2 years has brought composting to 11 elementary schools and the early learning center within the Eau Claire Area School District. All compost is processed by Earthbound Environmental Solutions and schools receive compost to use in school gardens.



**4,085 lbs.**  
of food waste.

Average amount of food waste  
diverted from 12 schools per week.

## Plastic-Free Eau Claire

The Plastic-Free Eau Claire Pledge empowers individuals to make a tangible commitment to reducing their plastic footprint.

By signing the pledge, you are declaring your dedication to:

- Reducing the use of single-use plastics in your daily life.
- Seeking out and supporting sustainable alternatives to plastic.
- Striving to follow proper recycling protocols.
- Advocating for change in our community.



Together, we can make a difference. Every small change adds up to a monumental impact, and by joining forces, we have the power to create lasting change.

**Take the  
Plastic-Free  
Pledge!**



Learn more at  
[jonahjustice.org/plastic-free-eau-claire/](https://jonahjustice.org/plastic-free-eau-claire/)

In partnership with:



# WHAT DO I DO WITH...?

01

## PLASTIC BAGS

Save your plastic bags and recycle them at a Target, Hy-vee, Wal-Mart or Festival Foods. Plastic bags are NOT recyclable through curbside pickup.

### Other plastic film products:

- Ziploc, cereal, and bread bags
- Bubble wrap
- Amazon plastic packaging
- Water bottle case overwrap



02

## FOR CLOTHING

Refashion or fix used items before donating or selling. Businesses such as Hope Gospel, Goodwill, Plato's Closet, and Saver's will accept wearable items.



03

## MATTRESSES TAKE UP LOTS OF SPACE IN THE LANDFILL.

Recycle with a furniture store or call Kersten Family Junk Removal for curbside service (715)598-3677



04

## LARGE FURNITURE, COOKWARE, LAMPS, TABLES, CABINETS, AND CUPBOARDS

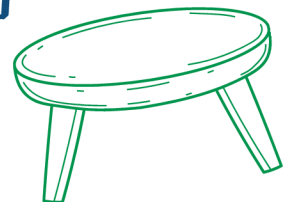
can all be brought to donation sites to be reused:

Chippewa Valley Habitat for Humanity Restore:  
145 N Clairemont Ave, Eau Claire, WI 54703

Building Hope Donation center: 2108 Western Avenue, Eau Claire, WI 54703

Phone: (715) 838-2084

To dispose of items curbside, call your hauler for a quote.



05

Light bulbs can be recycled at our clean sweep event, First Choice, or Batteries Plus Bulbs for a fee.



Check out this QR code to learn how to recycle other items.





# 2025 RECYCLING/IMPORTANT DATES

## CLEAN SWEEP EVENTS

May 10 July 26 September 20  
8am-12pm

WRR Environmental Services  
5200 Ryder Road  
Eau Claire, WI 54703

### Accepted for a Fee

- Latex Paint - \$4/gallon
- Light bulbs - varies
- 20lb Propane Cylinders

Chemicals must be in the original container with the product label.

Please stay in your vehicle to reduce wait times. Staff will unload your vehicle.

Can't make it to the event? Schedule an appointment with WRR Environmental to dispose of your hazardous waste properly. Fees apply.

Questions about accepted materials? Call 715-834-9624.

### No Fee

- Oil based paints
- Thinners/Strippers
- Stains/Varnish
- Solvents
- Cleaners/Polishes
- Old Fuel
- Used oil and filters
- Antifreeze
- Aerosol Cans

EAU CLAIRE COUNTY'S

## HOME COMPOSTER

Call our office (715)839-2756 or email [recycling@eauclairecounty.gov](mailto:recycling@eauclairecounty.gov) to see if we have bins available for purchase.

- 100% recycled plastic
- Black to absorb heat quickly
- 128 gallon capacity (can hold six to eight 30-gallon bags of yard material)
- Easy to use, simple to assemble and move if you need



**FIRST CHOICE**

## Free Electronics Recycling for Eau Claire County Residents!

- All TV's & Monitors
- Small Appliances
- Vacuums
- Washers, dryers, furnaces
- Stoves, hot water heaters
- Microwaves
- All wires & metals
- Keyboards, cellphones, cameras, wires/cables & accessories
- LCD monitors
- Printers, scanners, fax machines
- VCR, DVD, Typewriters
- Radios, stereos or satellite receivers



### Free Battery Recycling

All sizes and chemistries accepted.

Batteries and terminals must be taped with clear tape. Alkaline batteries do not need to be taped.

Monday-Thursday 8:00AM-5:00PM  
Friday & Saturday 9:00AM -1:00PM  
525 Park Ridge Ct.  
Eau Claire, WI 54703

### RECYCLE YOUR MATTRESS & BOXSPRING

May 10, 10AM-2PM  
Calvary Baptist Church  
3036 Epiphany Ln, Eau Claire

**\$30/unit**

**Hosted by:**  
**Kersten Family Junk Removal**

**Learn more at:**  
**[ecjunkpickup.com/mattress-recycling-drop-off-event](http://ecjunkpickup.com/mattress-recycling-drop-off-event)**

**APRIL  
26**

## NATIONAL PRESCRIPTION DRUG TAKE-BACK DAY



10 a.m. to 2 p.m. at the Altoona Emergency Services building or Eau Claire County Government Center

- Drop off your unused or expired medication at the National Prescription Drug Take-Back event on Saturday, **April 26th from 10 a.m. to 2 p.m.** at the **Altoona Emergency Services** building in Altoona or at the **Eau Claire County Government Center** in Eau Claire for safe and free disposal.
- Holding onto unused or expired medications increases the chance of other people finding and using them. Younger children or pets may find medication and accidentally swallow it.
- Incorrectly disposing of medication in the garbage or drains can lead to contamination of the environment, further degrade ecosystems and pollute our waterways with dangerous chemicals that cannot be treated.

For more information and a list of permanent medication drop-off locations in Eau Claire County, visit [www.ECHealthAlliance.org/resources](http://www.ECHealthAlliance.org/resources) and scroll down to 'Prescription Drug Misuse & Safe Medication Disposal.'

## SHARPS DISPOSAL

In addition to disposal options available through your healthcare system, Eau Claire County has a new option for disposing of needles, lancets, syringes, and other sharps devices.



Nine sharps disposal boxes are now available throughout the county. Boxes can be found at:

- **Altoona Public Works** 2000 Spooner Ave.
- **Augusta City Hall** 145 W. Lincoln St.
- **Big Falls County Park** (North Entrance) 500 N. 110th Ave., Eau Claire
- **Coon Fork Campground** E25501 Co Rd CF, Augusta
- **Eau Claire County Government Center** 721 Oxford Ave.
- **Eau Claire County Jail Lobby**, 710 2nd Ave.
- **Fairchild Community Center**, 121 Farmer St.
- **Owen Park** (near the tennis courts) 501 1st Ave., Eau Claire
- **Wilson Park**, 500 S. Barstow St., Eau Claire

Learn more about sharps disposal by visiting [www.ECHealthAlliance.org/resources](http://www.ECHealthAlliance.org/resources) and scroll down to 'Eau Claire County Sharps Disposal.'

# DISCOUNTED WELL WATER TESTING

**For private well users • Monday, April 21 through Thursday, May 1**

### How to test your well water:

- Pick up a sample kit at the Health Department (720 2nd Ave., Eau Claire).
- Fill the bottle up at your home. Make sure to follow the instructions in the kit.
- Return your water sample and your payment to the Health Department between April 21-May 1 to get the discounted price.
- Your results will be emailed/mailed to you. Questions? Call us at 715-839-2870.

### **\$100** Homeowners **PREMIUM** Bundle SAVE 33% NORMAL PRICE \$150

Includes bacteria, nitrate, arsenic, copper, manganese, lead, iron, hardness, aluminum, antimony, barium, beryllium, cadmium, cobalt, chromium, nickel, potassium, selenium, sodium, silver, thallium, and zinc testing. Recommended for any private well user, especially if they haven't tested for metals in the last 5 years.

### **\$34** Bacteria & Nitrate Bundle SAVE 32% NORMAL PRICE \$50

Bundle includes bacteria and nitrate testing. Recommended for all private well users with private wells annually.

*Bacteria and nitrate tests can also be purchased separately.*



**Scan for  
more info!**



[WWW.EAUCLAIREWI.GOV](http://WWW.EAUCLAIREWI.GOV)

**CALL THE HEALTH DEPARTMENT AT 715-839-4718  
OR SCAN THE QR CODE FOR MORE INFORMATION**







# FOOD WASTE AND COMPOSTING



## FOOD FACTS

- Wasted food makes up approximately 14% of all waste found in Wisconsin landfills.
- When organic matter breaks down in landfills it emits greenhouse gases, contributing to climate change.
- It is estimated that households spend \$1,866 a year on wasted food.

## WAYS TO START COMPOSTING

- Purchase a Home Composter during the county's compost bin sale.
- Enroll in curbside composting services through Earthbound Environmental.
- Follow this QR code to build your own compost bin at home. →



## FOOD STORAGE TIPS



### COUNTERTOP

- **Avocados, bananas, mangos, peaches, melons, oranges, tomatoes:** until ripe, refrigerate once ripe.

### IN THE FRIDGE

- **Berries, cherries, grapes:** container with vents to let moisture escape.
- **Mushrooms:** paper bag to absorb moisture.
- **Beets, broccoli, cabbage, celery, cucumbers, peppers:** high-humidity crisper drawer.
- **Apples, ripe countertop fruit:** drawer away from other produce.

### A COOL, DRY PLACE

- **Garlic, onions, potatoes, sweet potatoes, squash.**

### IN THE FREEZER

- **Nuts, seeds, produce, meat, seafood, tofu, bread, baked goods, herbs.**

## BENEFITS OF COMPOSTING

- Composting is a natural way to recycle food and other biodegradable waste into enriched, fertile soil.
- Products of composting can be used in gardens, lawns, agricultural use, and as mulch.
- Reduces methane, the need for chemical fertilizers, and carbon dioxide.
- Improves soil quality to restore forests, wetlands, and habitats.



## EXTRA FOOD?

- Consider donating extra, unexpired food items to local food banks if you aren't going to eat them.

## WHAT IS COMPOSTABLE?

- Coffee grounds and filters
- Soiled cardboard
- Food scraps
- Meat/seafood (in small amounts)
- Yard scraps
- Fur
- Nut shells
- Paper towels and napkins

## EASY WAYS TO CUT DOWN ON FOOD WASTE

- Take inventory of pantry/fridge and make a list of what you need before grocery shopping.
- Meal prep and plan appropriate servings for yourself and others you're feeding.
- Use vegetable and chicken scraps to make your own broth



## RESOURCES

- Check out UW-Extension for their Master Composter resources.
- **Earthbound Environmental contact:** <https://www.earthboundenviro.com>



# BIODIVERSITY



The Lower Chippewa River Basin contains more than 125 rare species and 25% of Wisconsin's native prairie. Local efforts such as protecting our urban forest are crucial for maintaining this biodiversity.



## How to Promote Biodiversity

- Shrink lawns.
- Landscape with native trees and plants.
- Remove/control invasive plants and animals.
- Reduce light pollution.
- Minimize pesticides.
- Check out Dr. Doug Tallamy's Talk "Nature's Best Hope" for more information!

**Help revitalize Eau Claire habitats, one yard at a time -  
Join the CV Biodiversity Partnership**

[cvbiodiversitypartnership.org](http://cvbiodiversitypartnership.org)

## Local Native Plant Sales

Land Conservation Division Tree and Shrub Sale

When: November 1st - January 31st  
Contact: [holly.weigand@eauclairecounty.gov](mailto:holly.weigand@eauclairecounty.gov)

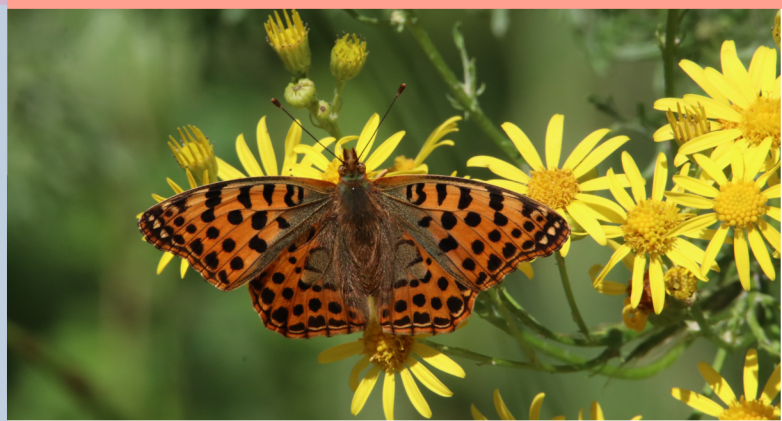
## Community Gardens

There are currently 5 Community Gardens throughout the City of Eau Claire. If you're interested in gardening but lack the space, have gardening knowledge to share, or want to learn something new about gardening, check out the Community Garden Website!  
[eauclairecommunitygardens.com](http://eauclairecommunitygardens.com)

## Local Garden Club

Join the Eau Claire Master Gardeners or the Eau Claire Garden Club to learn from a community of experts whether you're already an expert or are just getting started!

[eauclaireareamastergardener.org](http://eauclaireareamastergardener.org)  
[eauclairegardenclub.com](http://eauclairegardenclub.com)





# Sustainable Homes with EnergySage

Disclaimer: Eau Claire County does not endorse any specific contractors found on the EnergySage website.

## Rooftop Solar

By investing in rooftop solar, homeowners can lower their electricity bills, increase energy independence, and contribute to a greener environment, all while potentially qualifying for tax incentives and rebates. This makes going solar a financially attractive option for homeowners across Wisconsin.

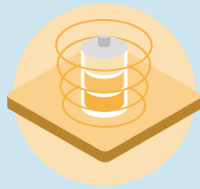
Learn more with this  
Rooftop Solar 101 guide. →



## Energy Storage

Energy storage systems, such as batteries, allow you to store excess energy generated by solar panels during the day for use during peak demand times or at night when sunlight is unavailable. Integrating energy storage with solar power can enhance energy independence, enhance resiliency during power outages, and maximize the benefits of clean energy generation.

Learn more with this  
Energy Storage 101 guide. →



## Heat Pumps

Heat pumps are cleaner and more comfortable than gas furnaces, oil boilers, and traditional air conditioning systems – they also heat and cool your home – pretty cool huh? With their versatility and energy efficiency, heat pumps present a compelling solution for sustainable and cost-effective home climate control in Wisconsin's diverse weather conditions.

Learn more with this  
Heat Pump 101 guide. →



## EV Charging

Electric vehicles (EVs) offer Wisconsin residents a sustainable transportation option with lower operating costs and reduced emissions. Installing EV charging stations at home provides convenience and flexibility, allowing drivers to easily recharge their vehicles overnight. When you pair your home EV charger with a solar panel system, you're powering your car with free, clean energy.

Learn more with this  
EV charging 101 guide



### Energy Incentives

Learn about programs available to your home, business, or community organization at [www.focusonenergy.com](http://www.focusonenergy.com)

### Local Utility Programs

Contact your utility company to learn about programs you may be able to stack with Focus on Energy and IRA incentives!

### IRA and Free Solar Calculator

Visit: [www.rewiringamerica.org/app/ira-calculator](http://www.rewiringamerica.org/app/ira-calculator) to see what tax incentives are available to you!

Use this free  
Solar Calculator →





S1 County Road K Fall Creek, WI 54742  
beavercreekreserve.org  
**CONNECTING PEOPLE WITH NATURE**

**Non-Profit Org  
US Postage  
PAID  
Permit No. 1557  
Eau Claire, WI 54701**

# Beaver Creek Reserve Recycler

## What's Inside

- Beaver Creek Reserve
- Recycling Recap
- 2025 Important Dates
- Food Waste and Composting
- Biodiversity
- Sustainable Homes

Cov ntawv txhais lub Hmoob thiab cov  
ntawv koj muab luam tawm tau nyob rau  
[www.eauclairecounty.gov/recycling](http://www.eauclairecounty.gov/recycling).

Puede encontrar traducciones al español  
para descargar o dónde obtener una  
versión para imprimir aquí  
[www.eauclairecounty.gov/recycling](http://www.eauclairecounty.gov/recycling).



**Recycling & Sustainability Manager**  
(715) 839-2756  
[recycling@eauclairecounty.gov](mailto:recycling@eauclairecounty.gov)



Follow our Facebook page for important information and upcoming dates!  
[www.facebook.com/EauClaireCountyRecycling](https://www.facebook.com/EauClaireCountyRecycling)