



2024

# ANNUAL REPORT

Friends of Beaver Creek Reserve  
*Connecting People with Nature*



# Friends of Beaver Creek Reserve

## Fall Party & Annual Meeting

### SCHEDULE

Main Lodge, North Campus

**4:00-4:30 PM**

Check-In & Social Half-Hour

**4:30-5:30 PM**

Dinner

**5:30-7:00 PM**

Annual Meeting & Awards

*Let's reflect on 2023 and discuss our plans for 2024-2025 as we hear from our Executive Director, Erik Keisler, and some members of our Friends Board.*

*Also, we'll hear from one of our Naturalists, Jim Schwiebert, as he discusses our conservation efforts at the Henke Acres property.*

*We will end the Annual Meeting presentation with recognition awards.*

**Optional kids activity during presentation.**

**7:00-8:00 PM**

Campfire & Live Music

**8:00 PM**

Nighttime Activities

**Stargazing & Telescope Observing**

**Hobbs Observatory, 8:00 PM**

*Join members from Chippewa Valley Astronomical Society (CVAS) to view the night sky through telescopes, if skies are clear.*

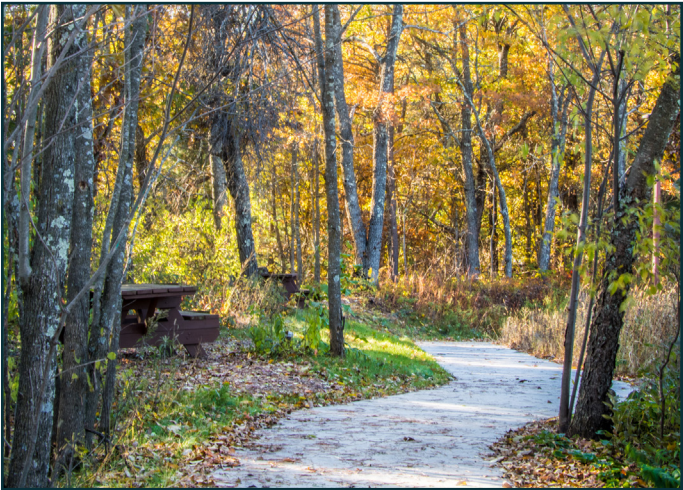
**Northern Saw-whet Owl Banding**

**Citizen Science Center, 8:00-10:00 PM**

*Northern Saw-whet Owl migration is underway! This is a great opportunity to learn about these tiny, charismatic, nighttime flyers, their migration, and the banding process.*

### TABLE OF CONTENTS

Director's Report.....	3-4
Notes from our Naturalists.....	5-6
Citizen Science Center Report.....	6-7
Meet the Team.....	8-13
Board Members.....	14
Volunteer Report.....	15
2025 Budget.....	16
Statements of Activities.....	17
Donations 2023.....	18-21
Grants Received 2023.....	22
Community Partner Spotlight.....	22
Beaver Creek Numbers.....	23
What Your Donation Looks Like.....	24





# DIRECTOR'S REPORT

*Erik Keisler, Executive Director*

Over the past twelve years at Beaver Creek, I have been working to add additional revenue streams to the budget, support our board and staff, and offer meaningful programs and projects for the community. We have been working to improve our spaces and grow incrementally to remain relevant and continue being a sustainable non-profit here in the Chippewa Valley. During this journey, we have faced challenges and found many solutions along the way, but one challenge we continue to face is our growing need for more space and improving our facilities. At some point in the near future, we will not be able to continue to provide our mission of *connecting people with nature* if we don't grow and adapt.

In an effort to better utilize and understand our current resources, Beaver Creek recently completed a campus plan draft with the help of Smith Group and our Friends Board of Directors. The reason for this plan

was to evaluate the growth and future of Beaver Creek Reserve and how to utilize the newly acquired property previously known as the Sherwood Inn, which was donated by Unity Bank of Fall Creek. The results of the plan identified areas of growth, which include an elevated treetop walkway, updates to current facilities, and the potential for a new Nature Center.



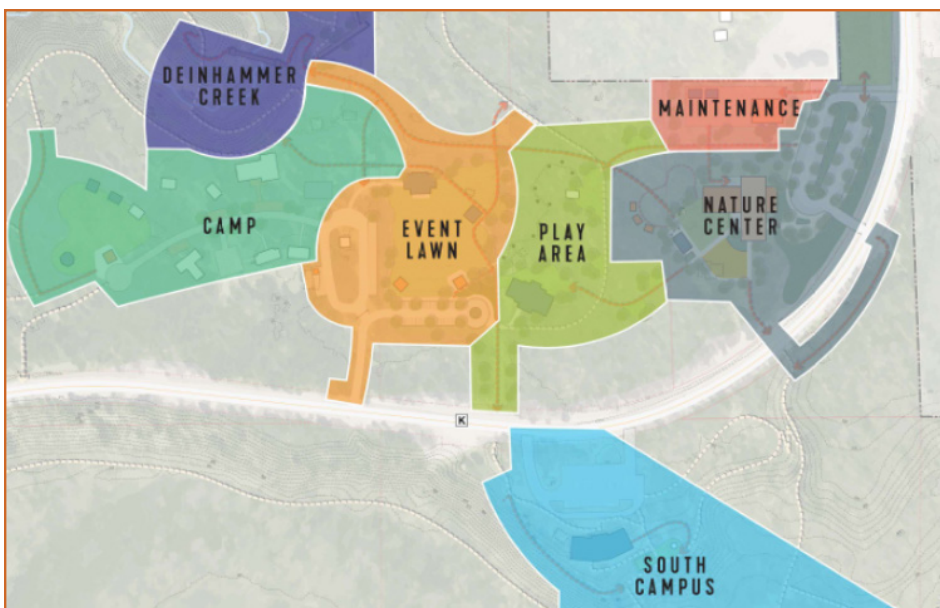
These potential ideas inspired us to apply for and receive a \$150,000 grant from the Pablo Foundation which we are using to engage consultants from Creative Fundraising Advisors (CFA). With the help of CFA, we will conduct a comprehensive campaign readiness and

feasibility study to help us determine the size, scope, and timing of a proposed campaign based on the campus plan draft ideas. We will also be hiring Smith Group to develop detailed plans once we have a funding goal and scope of the project. This is a major undertaking that we are both excited about but also cautious about as we go into this process with the same thoughtful manner that we have over the last twelve years.



We are achieving great outcomes at Beaver Creek; however, we are struggling to meet all of our community's needs with the spaces that we currently have. Even though we are technically a Nature Center, we have become more of a community center for this rural area, considering that we have a Nature Center, Youth Camp, Observatory, Citizen Science Center, as well as welcoming clubs such as the quilt, watercolor, astronomy, and beekeeping clubs, and other community groups. While Beaver Creek has a very diverse program list, we are also aware that there are communities in our area that have little to no presence here at Beaver Creek. We are making this a major priority during these studies. We

*(Continued on next page)*





# DIRECTOR'S REPORT *(continued)*

*Erik Keisler, Executive Director*

would like to remove any barriers and make any new structures and programs more welcoming to all community members.



We are also facing challenges to our traditional programming at Beaver Creek. As we saw with this previous winter, climate change is a real challenge we will continue to face. If we don't adapt our programming and our spaces, we won't be able to be as successful for another 75 years. Ideas like a treetop walkway would be more relevant if we continued to have winters with little to no snow, like last year. Last winter was one of the first winters where we never opened up our winter rentals. We never had enough snow to even groom the trails! This impacted our first quarter of 2024, where we had some of the worst visitation numbers since I have been at Beaver Creek. However, thanks to another great Butterfly House season, we are back on track! These numbers are juxtaposed to the year prior, which was one of our best winters on record.



You can imagine that this makes it hard to manage tasks and project budgets. These campus improvements will include programmatic goals as well as have a more sustainable building so that future dollars can be focused on programs, and not building costs.



While all of these "big" picture ideas are cooking, we continue to make great strides with our daily operations. Our summer school and camp partnerships have expanded to include Eau Claire, Chippewa Falls, Altoona, Augusta and Fall Creek school districts. We learned this year that Beaver Creek is the largest host site in Wisconsin for AmeriCorps placements with Marshfield Clinic. Snapper's tank has now been installed and he has stolen the show in the basement of the Wise Nature Center. We have also been able to add new staff and volunteers to our team, which allows us to develop personal relationships with our visitors and encourage them to sign up for new memberships. The Native Plant Sale sold more plants and raised more money than ever before. The Friends Board has increased wages for staff to meet industry standards, and we are

looking for continued ways to engage our board members, volunteers, and donors. If you have ideas, we welcome your feedback.

We stand on the edge of another great adventure for Beaver Creek, and we know our presence is more important as an organization than ever before. It is our job to make sure we are rising to the challenges that we can see and those that we can't. Being flexible is what has allowed us to achieve our goals, and having your support is what allows us to be in such a great position looking forward!

*-Erik Keisler,  
Executive Director*





# NOTES FROM OUR NATURALISTS

*Megan Giefer & John Muetz*

2023-2024 was an exciting year for the education team! We have had new additions and improvements to help us continue our mission of *connecting people with nature!*

## Field Trips

2023 was a great year for field trips! We saw over 3,000 students (over 500 more than we had in 2022) come through our doors in the winter, spring, summer, and fall. We heard great feedback from students, parents, and even the teachers as we continue our field trip curriculum to be 100% outdoors. Every year, we work to be 100% outside for all field trips by purchasing equipment and supplies, like rain ponchos and rain boots for students. Learning can now be enjoyable for all no matter the weather. We have also added four new AmeriCorps Environmental Educators to our team this past September. These educators are well trained in Wisconsin ecology, and are working to develop professional skills while assisting our education team in leading field trips and summer camps this year.

In November 2023, Beaver Creek Reserve was awarded \$21,375 for rural education field trips from a grant through Compeer Financial directed by the Eau Claire Community Foundation. This past year, we welcomed four out of the five school districts that were included in the grant application: Alma, Birchwood, Bruce, and Cornell. Seven field trips were offered to these districts during the 2023-2024 school year, and we welcomed over 330 students, plus faculty and chaperones. We also offered

bus transportation for two of the districts. Thanks to this funding, students from rural areas were able to learn about nature alongside their peers at a place many of them have never visited. We are incredibly excited for these school districts to return again so we can continue to positively impact more students from rural communities.

We are looking forward to having another great and successful field trip season this new school year!



## Summer Camps

In 2023 our summer camps offered more opportunities for students in the Chippewa Valley to come out to Beaver Creek and connect with nature. Through our partnerships with our four local school districts (Eau Claire, Altoona, Augusta, and Fall Creek) over 700 students were able to attend summer camps. That is about 100 more students than we had in 2022. We offered two more summer camp opportunities in 2023 for a total of 25 camps. We are very happy to see our partnerships growing with local school districts, as it means more kids will be able to experience the joys of nature and the excitement of a summer camp. New in 2023, transportation provided by our district partners allowed us to reach a much

broader set of learners this year, who may not usually have been able to make it all the way out to Beaver Creek. Once again in 2024, we continued to expand our summer camp program by adding Chippewa Falls Area Unified School District to the growing list of district partners. This meant even more students were able to attend camps through state Department of Public Instruction (DPI) support. 2024 camps also saw a boom in participants from both the Eau Claire and Altoona School Districts bus transportation program. We are still finalizing some numbers for the 2024 season, and will share them with you at the next Annual Meeting. All in all, 2023 and 2024 summer camps were a blast, and we hope to keep expanding access to this summer fun in the years to come!



## Butterfly House

In 2023, the Butterfly House saw over 7,000 visitors walk through the doors, which is over 1,200 more visitors than 2022! That means more people want to explore and learn about native butterflies, caterpillars, and their host plants.

This year we continued to utilize local advertising initiatives by

*(Continued on next page)*

# NOTES FROM OUR NATURALISTS

*(continued)*

putting up two billboards around the Chippewa Valley as a way to market the Butterfly House, attracting more visitors from out of town. In addition to our daily visitation from the public, we also ran several Butterfly Camps for grades Kindergarten-5th this summer. The Butterfly House continues to be a top attraction for visitors who come to Beaver Creek Reserve.

## Animal Ambassador Update

Snapper has moved into his forever home! Design consultations began in 2023 with custom aquarium makers at Aquatic Realmz Design, a Wisconsin-based company who has designed custom enclosures for other nature centers like the Schlitz Audubon Nature Center. Once the design was completed,

the tank was built over the course of a few months and then installed in the basement lobby of the Wise Nature Center in May of 2024. Thanks to this new enclosure, Snapper will be able to grow to a shell diameter length of over 30 inches before he can outgrow this tank!



In May 2024 we traveled to Watertown, South Dakota, to bring back our newest animal ambassador, Jack the American Kestrel. We received Jack from

the Bramble Park Zoo and was given a tour of the facility as well. Jack was a display bird for the zoo and has no prior experience being handled. We are improving each day with regular training and we hope that by early 2025, we can use him for public educational programs.



*-Megan Giefer & John Muetz,  
Naturalists*

## CITIZEN SCIENCE CENTER REPORT

*Jeanette Kelly, Citizen Science & Education Director*

We actually thought we might not be very busy this year, but here is a snapshot of this past year at the Citizen Science Center.

### Bat Monitoring

Xcel Energy Foundation has continued its support of the Citizen Science Center by granting us \$5,000 to provide education and train new volunteers to engage in bat monitoring.

- Bat Programs: 6
- Public Bat Walks: 4
- New Acoustic Monitoring Volunteers: 10

- Bat Volunteer Hours: 55
- Bat Houses Built: 17

### Mussel Monitoring

We did not have any funding to study mussels in 2024, but Bre Klockzien could not help but get her feet wet. Bre worked with Lisie Kitchel, Wisconsin DNR Mussel Biologist, and held a training this summer, sparking mussel interest in new potential volunteers. With the shockingly low numbers of mussels found in our 2023 Eau Claire County survey, Bre has proposed a new project. With the support of \$12,000 from Xcel's Natural

Resources Fund, the CSC will survey 43 streams in Chippewa County to determine mussel populations.

- Mussel Volunteers Trained: 9



*Mussel Monitoring, Summer 2023*

*(Continued on next page)*



# CITIZEN SCIENCE CENTER REPORT

(continued)

## **Lake Monitoring & Protection Network (LMPN)**

A cooperative agreement with Eau Claire, Chippewa, Rusk, Dunn, Pepin, and Buffalo counties.

- Volunteer LMPN Project
- Hours: 200+ Hours

## **Clean Boats Clean Waters (CBCW)**

- Total Watercraft Inspectors Trained: 8
- Total Participating Lake Groups: 6
- Total CBCW/Watercraft Inspection Hours: 995 (Paid & Volunteer)

## **CLMN – Citizen Lake Monitoring Network**

- Total CLMN Volunteers Trained: 9
- Total CLMN Sites: 23

## **AIS Monitoring – Aquatic Invasive Species**

- 12 Total Sites Monitored (Wetlands, rivers, lakes)
- 3 Incident Reports
- 6 New Species Found

## **Events/Programs**

- Total LMPN Programs: 16



*Mussel Monitoring, Summer 2023*

## **Avian Monitoring Program (AMP)**

All banding projects require trained volunteers that capture birds and place metal bands on the birds' legs before releasing them.

## **Weekly Feeder Banding – Est. in 1997**

- 311 Birds Banded
- 29 Species

## **American Kestrel Nest Box Monitoring – Est. in 2002**

- 22 Birds Banded

## **Monitoring Avian Productivity & Survivorship at Henke Acres (MAPS) – Est. in 2003**

- 91 Birds Banded
- 37 Species

## **Northern Saw-whet Owl Migration – Est. in 2004**

- 112 Owls Banded
- 2 Species (Saw-whet & Barred)



*Kestrel Monitoring, Summer 2024*

## **Bird Monitoring**

Bird monitoring projects do not involve capturing the birds. Most monitoring projects involve viewing birds from a distance or checking nest boxes.

## **Midwest Crane Count**

- 136 Sandhill Cranes

## **Bluebird Restoration Project**

- 5 Trails Monitored
- 51 Nesting Sites
- 38 Total Young
- 74% Nesting Success Rate

## **Christmas Bird Count**

- 5 Counts (new BCR count)
- 19,142 Birds
- 64 Species

## **Bald Eagle Nest Watch**

- 13 Nests
- 13 Fledglings

## **Education & Outreach**

- 39 Programs
- 3 Bander Trainings
- 5 Bander Continued Learning Classes

## **Volunteers**

- 100 Volunteers
- 2,620 Volunteer Hours



*Bluebird Nest Box Monitoring, Summer 2024*

Thank you for all the support this past year through volunteering as citizen scientists and participating in our programming. It is exciting that even after almost 20 years, the Citizen Science Center keeps having fun and finding ways to grow and engage our community.

-Jeanette Kelly,  
Citizen Science &  
Education Director



*MAPS, Summer 2024*

# MEET THE TEAM

Our team is currently made up of ten full-time staff, four part-time staff, and six AmeriCorps members through the Marshfield Clinic Health Systems Community Corps AmeriCorps program. On the following pages, you will get to meet our staff and their roles here at Beaver Creek Reserve, learn about some of their hobbies and interests, and see what they've been up to this past year!

---



## Ali Bowe

*AmeriCorps Volunteer Coordinator*

Hi, I'm Ali and I am oh so excited to be joining Beaver Creek Reserve as an AmeriCorps Volunteer Coordinator! I grew up visiting Beaver Creek for field trips and events which sparked my interest in environmental science. I received a degree in Biological Systems Engineering with an emphasis on Natural Resources. After graduating, I moved to Montana and served with the Montana Conservation Corps, performing water conservation fieldwork and outreach. I recently moved back home from working in Idaho as an Agricultural Engineer. It has been so great rediscovering the Midwest and redirecting

my career to work more with people and communities! I am looking forward to connecting with folks in nature and expanding volunteer opportunities at Beaver Creek. Outside of work, I love to hike with my dog, find some zen doing yoga, and try new crafts... Most recently I've been making candles!

---

## Bre Klockzien

*Aquatic Invasive Species Coordinator*

Hey everyone! I'm excited to begin my second year at Beaver Creek Reserve, where I focus on a range of citizen science projects including birds, freshwater mussels, bats, and aquatic invasive species. The highlight of my position is collaborating with dedicated professionals and volunteers across various programs. Their knowledge and enthusiasm inspire me, and I am truly grateful for them! Over the past year, I have also been branching out through my professional and personal life to learn more about the world around me and learn some new exciting hobbies! Looking ahead, I am excited to dive into new projects and see what this next year brings!

---



## Julie Felske

*Membership & Donation Manager*

This November I will celebrate my ninth year at Beaver Creek as the Membership and Donation Manager. Before I was an employee, I volunteered as a Nature Center weekend host for many years. Beaver Creek Reserve has been a part of my family's lives since we moved to the Chippewa Valley 17 years ago. My kids have grown up going to summer camps, attending family programs, hiking the trails, and now as volunteers. My oldest volunteers in the Caterpillar Lab and as a Butterfly House Guide in the summer months, and my youngest helps out with Nature Nuts summer camp. When we aren't at Beaver Creek, you can find us hiking, biking, kayaking, camping, and exploring.





## Amanda Russell

### *AmeriCorps Environmental Educator*

Hello! My name is Amanda and I am excited to be starting as one of the AmeriCorps Environmental Educators here at Beaver Creek this year. I grew up in a small town in central Iowa and attended Drake University in Des Moines, IA, with a BA in Environmental Sustainability. I found my love of the outdoors in two summers spent as a Cabin Guide at Camp Wesley Woods. I chose to embrace that and channel it into my career, which led to a wonderful opportunity to spend two summers as an environmental education intern and associate with City of Des Moines Parks and Recreation. During those two summers, I learned a lot about urban environmental programming, and that brought me to this position at Beaver Creek Reserve. I am looking forward to continuing to learn about Beaver Creek, the state of Wisconsin as a whole, and the programming opportunities we have on this beautiful campus. When I'm not working, I enjoy outdoor recreation like hiking and canoeing, and I also love to spend time reading, baking, gardening, and exploring the world around me. I am so grateful to be here and I can't wait to see what this year holds for me!

## Ellie Dedrick

### *AmeriCorps Environmental Educator*

Hi, my name is Ellie Dedrick! I am so excited to be serving an AmeriCorps term as an Environmental Educator here at Beaver Creek Reserve. I grew up in the Milwaukee suburbs and spent my childhood going for family walks in the Kettle Moraine State Forest. On our family walks we would learn about the native plants, invasive species, and play games! This helped foster my love for the environment, eventually leading me to pursue a career in Outdoor Education. I have a BS in Outdoor Education from Northland College where I was able to have many unique outdoor experiences- I would love to tell you about them! I enjoy going for hikes, rock climbing, and learning about the natural world. This past spring, I was able to rock climb at Joshua Tree National Park which was an amazing experience. I love the National Parks and would one day like to visit all of them! I am passionate about sharing the wonders of nature with others and I cannot wait to serve this year at Beaver Creek.



## Grace Bowe

### *AmeriCorps Environmental Educator*

Hi, my name is Grace Bowe and I am an AmeriCorps Environmental Educator here at Beaver Creek Reserve! I graduated this past spring from UWEC with a degree in Environmental Geography and a certificate in water resources, I also have a research background exploring the fluvial geomorphology of the Eau-Claire area. I found my love of environmental education at UWEC. I am passionate and curious about environmental conservation, traditional indigenous ecological knowledge, herbalism, and the accessibility of outdoor skills for all! I grew up in the Chippewa Valley and I am so excited to share my love of Wisconsin ecology through my time at Beaver Creek Reserve. My hobbies include kayaking, yoga, cooking, reading, hiking, camping, and spending time with my loved ones. I am so excited for my time here at Beaver Creek Reserve!

## Tori Lindert

*Marketing & Media Coordinator*

Hi everyone! I am starting my third year here at Beaver Creek Reserve, and I am excited to start my new position as a full-time staff member. I am beyond grateful to continue my journey here and I am excited to see what this new year brings.

This past year, I finished out my AmeriCorps term doing a ton of volunteer coordination, assisting with special events, and filming fun videos for our social media pages. As far as my personal life goes, I spent quite a few days in the water this summer kayaking and swimming in Eau Claire and at my family's lake house in Michigan. I recently moved into a new apartment with my husband Ryan, and we brought our sweet cat, Hazel, here to be with us in Eau Claire. Cheers to the new year and I hope to see you around.



## John Muetz

*Naturalist*

My name is John Muetz and I have almost completed my third year as a Naturalist at Beaver Creek. I have been involved with the organization in many capacities over the years, starting out as a summer Naturalist Intern, working as an Office Assistant, and working on preserving and recording Beaver Creek's long history of environmental education as an AmeriCorps member. My background is in social studies education, but I have always had a passion for studying environmental history and how human beings shape and are shaped by the natural world. Over the past year I have enjoyed fine

tuning our maple syrup operation, working with all of the great volunteers in the native plant sale, running summer camps, and seeing students from all over the Chippewa Valley out for field trips!

## Julie Mead

*Bookkeeper*

I'm Julie Mead, un-retired bookkeeper. After working in the non-profit sector for almost 20 years, I left my previous job at the end of 2022 and settled into the life of Grandmother (a truly satisfying transition.) When Beaver Creek advertised they were looking for a part-time bookkeeper, my family encouraged me to look into it. Part-time seemed feasible, still giving me ample time with those grandbabies. While still settling into my role here, I feel I have quickly become part of a great team. The camaraderie is infectious, and genuine love of what we do is the glue.

One thing I love is antiques and Flea Market shopping. I enjoy hunting through junk shops looking for the perfect gifts and trinkets. It never ceases to amaze me how one man's trash is another's treasure. A couple summers ago, my husband and I went on a road trip to New England, stopping and shopping our way through the Appalachians. Although we were driving a pickup truck, we didn't find anything very big to bring back—just prepared.







## Jim Schwiebert

*Naturalist*

It was an exciting year from a land management perspective at Beaver Creek. We conducted two controlled burns on the Henke property. One area had been previously treated for spotted knapweed and was snow-seeded with prairie grass. The response was tremendous with virtually no knapweed remaining. Rotational burns are planned for the main prairie areas at the Henke property. The battle to contain spotted knapweed continues, with one small broadcast spray area and general spot spraying carried out this year. One disconcerting find was the discovery (first occurrence) of a patch of garlic mustard below the Nature Center, and glossy buckthorn (first time) at the Henke property. Invasive species control (especially buckthorn) continues to be a major land management initiative and time consumer. As usual I'm still leading some hikes and snowshoe lacing classes, teaching foraging classes, and helping with the instruction of the Master Naturalist training program at Beaver Creek. And personally... Hiking, biking, fishing, canoeing, mushroom hunting, and foraging. So much to do!

## Kendra O'Dell

*AmeriCorps Environmental Educator*

Hello everyone! I'm Kendra and I am an AmeriCorps Environmental Educator. I work with school groups and the general public to facilitate curiosity and learning about the great outdoors. This includes leading hikes, teaching survival skills, and working with our animal ambassadors. When I'm not at work I spend time hiking, camping, going to concerts, and hanging out with my dogs. I am really looking forward to Halloween this year and apple orchard season!



## Claire Molina

*AmeriCorps Avian Field Technician*

Hello! My name is Claire Molina and I will be serving as the Avian Field Technician at Beaver Creek Reserve through MCHS AmeriCorps. I am originally from Seattle, Washington where I first fell in love with the outdoors and wildlife. I moved to the Midwest this summer and just wrapped up a position at Cuyahoga Valley National Park in Ohio where I worked on science communication, outreach and of course, bird monitoring. I am very passionate about avian studies and conservation, so I am excited to continue working with birds here at Beaver Creek. I will be working on a variety of different projects including Saw-whet Owl banding, American Kestrel nest box monitoring and assisting at the MAPS banding station. I am also very excited by citizen science and can't wait to work with volunteers on programs like the great backyard bird count. Aside from birding, I love sports and grew up playing volleyball and soccer so I will be on the lookout for a league to play in. I am excited to explore the area and get to know everyone!



## Kirsten Holmes

*Office & Operations Director*

This year marks my ninth year at Beaver Creek Reserve. When I started, my family had young, elementary school dudes. I now have a Senior and a Sophomore, and you may have seen them around this summer. Ephraim has been helping with the Maintenance Department and Easton has been helping at the front desk. It is quite wonderful to have them hanging around BCR, learning from this truly brilliant staff. In 2023 I was asked to take on more responsibility as the Office and Operations Director. First on my list was to grow the front office: we hired one full-time and one part-time position, both invaluable additions as we continually upgrade our customer service both here at the Nature Center and with our rentals in the Youth Camp. I am a lucky lady to be able to work with this group, connecting people with nature.

---



## Kim Cesafsky

*Nature Center Coordinator*

My name is Kim and I am the Nature Center Coordinator. I just celebrated my first anniversary at Beaver Creek. What a fun and educational year it has been! I was up close to a Saw-whet Owl, which were super adorable! My husband and I are also proud parents of an adopted wood thrush, thanks to the bird banders for coming to our property and tagging our wood thrush named Scout! I also had the opportunity to be part of the tagging and releasing of a monarch butterfly. Before we released our butterfly, we learned about the tagging process and needed to name our butterfly. I named my monarch Henriette, after my mom. After I released Henrietta, I realized my monarch was a male. Oops, sorry mom!

I was also a TV star for one day! On opening day of the Butterfly House, WQOW came out and I was on the news talking about our new butterfly feeders. Those feeders were a big hit this year!

When I'm not at work I enjoy spending time with my husband, three boys and three grandkids. What an amazing year! To sum it up...there's a male monarch named Henrietta and a wood thrush named Scout migrating this fall. I wish them a safe trip and hope to see them next spring. P.S. You need to come out to Beaver Creek and connect with nature. It's the BEST!!!

---

## Kristen Giefer

*Marketing & Program Director*

I just started my fifth year here at Beaver Creek and moved into a new role as the Marketing & Program Director! This year I've really enjoyed getting ready for our Halloween event, Boofest, co-instructing our Master Naturalist training, and working with the K-1 grade group, Acorns, at our Nature Nuts Summer Camp! I also have a wonderful memory of coming out to Beaver Creek this past spring to see the northern lights with friends.

I've been on a few trips this year as well, including a relaxing trip to Playa del Carmen, Mexico, with my family, backpacking in the Porcupine Mountains with my sister, Megan, camping and hiking in Grand Marais, MN, canoeing in the Boundary Waters over the Fourth of July, as well as a couple planned trips up north this fall. I feel each year is a different experience, and I'm always learning something new and exciting!







## Mackenzie Curtis

*Office Assistant*

Hi, my name is Mackenzie Curtis and I work in the Nature Center as the Front Office Assistant. My first time visiting Beaver Creek Reserve was during my final year of college, where I was studying Ecology and Environmental Biology. I came out to watch an owl banding demonstration with my Conservation Biology class one evening and immediately knew I wanted to be more involved here. A few weeks later, I went through bird bander training so I could officially become part of the team. Eventually, I applied for a summer position with BCR to work as a Watercraft Inspector on Lake Wissota, which began my journey in working with invasive species. Once fall came, I moved inside, where my main responsibility is now working at the front desk where I get to interact with visitors from day to day. In my free time, I still love spending time outside and volunteering on various citizen science projects including bird banding, AIS monitoring, and mussel monitoring to name a few.

## Megan Giefer

*Naturalist*

2024 has been a year to remember, since so many amazing things have happened this year! It was a very successful and busy year personally and here at Beaver Creek Reserve. To start off we had another great Butterfly House season with over 6,500 visitors coming out to Beaver Creek to see native Wisconsin butterflies and plants. In the late summer and early fall, we tagged 100 Monarch butterflies with volunteers, staff, Wildlands Charter School, Youth Leadership Eau Claire, and Venture Academy 5th graders. I hope the Monarch butterflies have a great journey down to Mexico! I also completed my fourth Wisconsin Master Naturalist volunteer training hosted at Beaver Creek. We had a great group of adults and wonderful weather the whole week while learning about wildlife, plant ID, butterflies, and geology.

This is a very special year! In the fall of 2023, Steven and I got engaged along the North Shore in Minnesota and now we will be getting married on September 21st of this year along the North Shore! By the time, you read this I will be Megan Giefer-Schimmel. This has been a big year full of wedding planning. Besides wedding planning, I have been able to get a couple of camping trips in! Over the 4th of July, I traveled to the Boundary Waters along the Gunflint Trail and spent a couple of days paddling and portaging. Steven and I also adopted a fluffy orange cat named Rango! He is a spunky and loving kitty that brings us so much joy. I am excited to see what 2025 brings us!



## Jeanette Kelly

*Citizen Science & Education Director*

Hi, I am Jeanette Kelly, the Citizen Science & Education Director. My goal with this position is to encourage a strong personal connection between people and nature. My background is in both education and research, so my dual role at Beaver Creek Reserve is perfect for me. My goal is to work with our fantastic volunteers, naturalists, and citizen science staff to make Beaver Creek a sought-after facility to gain knowledge and skills for folks starting out in natural resources or environmental education fields.

I cannot lie, I have an amazing job. My favorite thing about my job is that I am always learning something new from the animals I observe, from the amazing staff, or from the intelligent and talented group of volunteers that I have the pleasure to work with.

# Friends of Beaver Creek Reserve

## Board of Directors

**John Kleven**

*President*

**Christopher Gierhart**

*Vice-President*

**Mark Wise**

*Treasurer*

**Heather DeLuka**

*Secretary*

**Troy Anderson**

**Warren Gallagher**

**Jamie Kane**

**Tami Schraufnagel**

**Kim Yoder**

## Endowment Committee

**Jim Murray**

*Chair*

**Denny Shea**

*Treasurer*

**Rick Koziel**





# VOLUNTEER REPORT

Hours recorded from:  
January 1 - December 31, 2023

**Total Hours: 8,658**  
**Total Volunteers: 536**

Department	# Volunteers	Department Total Hours	Sub-Department Total Hours	% Hours
<b>Beaver Creek Reserve</b>				
Beekeeping	6	2473	80	3%
Maple Syrup	12		97	4%
General Programming	2		56	2%
Nature Center Host	8		2162	87%
Rental Room	5		78	3%

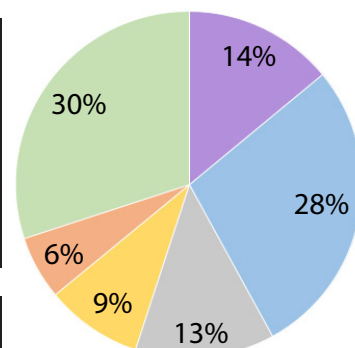
<b>Butterfly</b>				
House	27	528	394	75%
Lab	21		134	25%

<b>Citizen Science Center</b>				
Bird Banding: Weekly	21	2627	1181	45%
Bird Banding: MAPS	7		195	7%
Bird Banding : Owls	12		504	19%
Bird Banding : Avian Monitoring Program	16		90	3%
Nest Box Monitoring: Kestrel	9		114	4%
Bat Monitoring	5		38	1%
Christmas Bird Count	29		352	13.4%
General Programming	8		76	3%
Aquatic Invasive Species	5		77	3%

<b>Hobbs Observatory</b>				
CSC: Radio Astronomy	4	656	190	29%
Astronomy Outreach	16		401	61%
Miscellaneous (repairs, cleaning astronomy update)	7		65	10%

<b>Maintenance</b>				
General/Facility Maintenance	12	1160	160	14%
Trail Maintenance	212		1000	86%

<b>Events</b>				
Candlelight Snowshoe Hikes	6	1214	52	4%
Maple Syrup Saturday	3		20	2%
Greenhouse/Native Plant Sale	18		324	27%
Nature Nuts	29		672	55%
Butterfly Fest	9		36	3%
Boofest	4		16	1%
Holiday Crafting for Kids	21		84	7%
Earth Day Event	2		10	1%



- Beaver Creek Reserve
- Butterfly Program
- Citizen Science Center
- Hobbs Observatory
- Maintenance
- Special Events



*Cleaning Archery Range benches for Day of Caring, Sept 2023*



*Splitting firewood for Day of Caring, Sept 2023*

Thank you to all our volunteers for donating your time to Beaver Creek Reserve. Whether that was guiding visitors around our Butterfly House, becoming a night "owl" at our Northern Saw-whet Owl banding sessions, painting picnic tables and benches, or checking in visitors at the Wise Nature Center... we couldn't do what we do without YOU!

# Friends of Beaver Creek Reserve 2025 Operating Budget

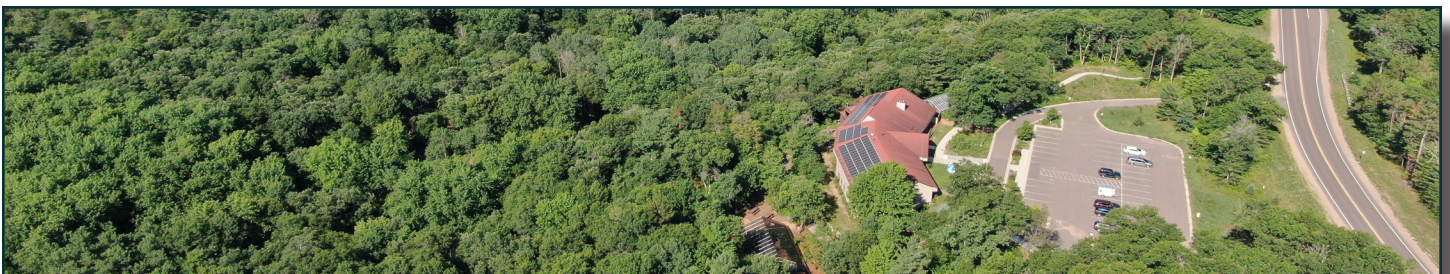
<b>Income</b>	<b>2024 Budget</b>	<b>2024 Jan-Aug</b>	<b>2025 Budget</b>
<i>Donations</i>	82,075	62,123	86,179
<i>Memberships</i>	72,931	44,715	76,578
<i>Grants</i>	301,744	257,575	316,831
<i>Fees</i>	173,780	211,390	221,960
<i>Special Events</i>	31,256	37,083	38,937
<i>Gift Shop</i>	23,213	30,371	31,890
<i>County Contract</i>	180,000	135,000	180,000
<i>Miscellaneous</i>	6,699	1,912	7,034
<b>Total</b>	<b>871,698</b>	<b>780,169</b>	<b>959,408</b>

## Expenses

<i>Wages/Benefits</i>	634,457	434,559	666,180
<i>Maintenance/Utilities</i>	82,761	82,416	86,899
<i>General Operations</i>	167,262	163,170	175,625
<i>Gift Shop</i>	14,470	6,548	15,194
<b>Total</b>	<b>898,950</b>	<b>686,693</b>	<b>943,898</b>

## Capital Improvement Budget

<i>Donations</i>	497,799	214,637	225,369
<i>Expenses</i>	47,773	40,533	50,162
<b>Balance</b>	<b>422,774</b>	<b>267,579</b>	<b>190,717</b>





**FRIENDS OF BEAVER CREEK RESERVE, INC.**  
**STATEMENTS OF FINANCIAL POSITION**  
**DECEMBER 31, 2023 AND 2022**

	<u>2023</u>	<u>2022</u>
<b>ASSETS</b>		
<b>CURRENT ASSETS</b>		
Cash and Cash Equivalents	\$ 364,370	\$ 183,721
Accounts Receivable	17,242	42,981
Grants Receivable	81,984	206,812
Inventory	14,311	13,620
Prepaid Expenses	28,575	59,644
Total Current Assets	<u>506,482</u>	<u>506,778</u>
<b>PROPERTY AND EQUIPMENT</b>	1,573,757	1,127,125
<b>INVESTMENTS</b>	1,700,819	1,491,565
<b>OTHER ASSETS</b>		
Funds Held at Eau Claire Community Foundation	<u>157,529</u>	<u>126,747</u>
Total Assets	<u><u>\$ 3,938,587</u></u>	<u><u>\$ 3,252,215</u></u>
<b>LIABILITIES AND NET ASSETS</b>		
<b>CURRENT LIABILITIES</b>		
Accounts Payable	\$ 30,495	\$ 68,885
Accrued Expenses	60,845	38,580
Deferred Revenue	7,721	6,587
Total Current Liabilities	<u>99,061</u>	<u>114,052</u>
<b>NET ASSETS</b>		
Without Donor Restrictions:		
Designated by Board for Endowment Fund	528,946	505,508
Undesignated	<u>1,882,988</u>	<u>1,377,038</u>
Total Without Donor Restrictions	2,411,934	1,882,546
With Donor Restrictions	<u>1,427,592</u>	<u>1,255,617</u>
Total Net Assets	<u><u>3,839,526</u></u>	<u><u>3,138,163</u></u>
Total Liabilities and Net Assets	<u><u>\$ 3,938,587</u></u>	<u><u>\$ 3,252,215</u></u>



# DONATIONS 2023

## **Endowment**

### **General Endowment Fund**

Anonymous x2  
Amy Alpine and John Grump  
Marlene Arntson  
Rick and Sandy Ayres  
James and Donna Backus  
Donald Baughman  
Bruce Bayley  
Jackie Belka  
Mary Bement  
Vicky and Ken Berg  
Don and Kim Bodeau  
Thomas Bruckner  
Michael and BebeAnna Buck  
Sharon Bussard  
Paula and Andy Bussman  
Carolyn Buvala  
Dennis and Antoinette  
Ciesielski  
Michael and Cynthia Cragg  
Eileen Cvancara  
Bob and Merrelyn Dawson  
Jim and Carolyn Dunning  
Katherine Duplessie  
Bill and Vicki Emery  
Lisa and Dick Erickson  
Eau Claire Community  
Foundation Richard J.  
Ziemann Fund  
Ray Fandel  
Mary Foote  
Warren Gallagher and Stella  
Pagonis  
Kent Gierhart  
Patricia and Larry Griffin  
Jeff Guettinger  
Albert and Beverly Harper  
Don Heard  
Pat Henke  
Jeff and Patty Henry  
Herbert H Kohl Charities  
Elizabeth Hess  
Patty Hoban  
Tom and Pam Janssen  
Jack and Sally Kaiser  
Erik Keisler and Katie Stolp-  
Keisler  
Margaret and Jim Koerner  
Rick Koziel and Judy Dekan

Denise and Nick Krajewski  
John and Jane Lokken  
Richard Magyar and Lyria  
Palas  
Clint and Brianne Markin  
Keith and Alison Martin  
James McCrady  
Karen and Dan Mittag  
Gregg and Emily Moore  
Marlin Mueller  
Martha and Michael O'Halloran  
John and Sharon Price  
Merey and Jerry Price  
Mary Rosolack  
Joe and Michelle Rupslauskas  
Jane Schley and Lisa  
Herrmann  
Judy and Jim Schwarzmeier  
Beverly Shelley  
Kim Shult  
Ardath Solrud  
Luther Strasburg  
Ellen Terwilliger  
Terry and Judy Valen  
Martin and Karen Voss  
Christine Yellowthunder  
Tom Zahorik

### **General Endowment Fund in Memory of Donald Frerking**

Elizabeth Sippel

### **General Endowment Fund in Memory of Lloyd and Anna Ohl**

Martha Terry and Michael Ohl

### **General Endowment Fund in Honor of Mark Wise**

Bobbie and Rob Kuchta

### **Citizen Science Center Fund**

Lou and Janet Frase  
Cindy Harper and Ken Gosling  
Dave and Linda Kragness  
Barbara MacNaughton  
Roger and Kathi Michelson  
Sarah and Greg Newman  
Judy and Jim Schwarzmeier  
Rick Swenson  
Martin and Karen Voss

### **Citizen Science Center Fund for Bird School Scholarships in the name of Gaylord Nelson Audubon**

Steve Betchkal

### **Doug and Kate Lindsay Adventure Fund**

Stephen and Linda Bluem  
Terry and Susan Borman  
Craig Carlson  
David and Evalyn Frasch  
John Gunderson  
Alec Lindsay and Kate Teeter  
Elizabeth and Ziad Lindsay-  
Qureshi  
Kathryn Lindsay  
Sharon and Jim Manz  
Marlin Mueller  
Sue Pearson  
Dianne and Ron Powers

### **Henke Acres Fund**

Jolene and Ron Berg  
John and Alice Droske  
Dave and Linda Kragness  
Kevin Pifer  
Robert Reichardt  
Kyle and Debbie Rogers  
Judy and Jim Schwarzmeier  
Vivian Tumm

### **Henke Acres Fund in Memory of Bill Henke**

Borgny Ager  
Thomas Barland  
Richard Beresford  
Susan Berg  
Scott Binde  
Beth Blue  
Craig Carlson  
Kirsten Cartier  
Kathy Clark  
Elizabeth Cripe  
Lea Anne Diesburg  
Mary Dorow  
Eau Claire Consulting  
Carrie Van Epps  
Horst Gabel  
Dennis Griffin  
Pat Henke



# DONATIONS 2023 *(continued)*

## **Henke Acres Fund in Memory of Bill Henke** *(cont.)*

Carlton Kangas  
Jennifer Khalaf  
Cheryal and Stan Keisler  
Rick Koziel and Judy Dekan  
Jill Lenhart  
Joyce McManus  
Bob Miller  
Karen and Dan Mittag  
Elizabeth Pilon  
Pleasant Valley Properties of Wisconsin, LLC  
Karen Preston  
Chris Rivera  
Mary Joyce  
Judy and Jim Schwarzmeier  
Mary Seidling  
Elizabeth Sippel  
Kathryn Lindsay  
James McCrady  
Shirley Ritter  
Michael Schatz  
Marjory Shong  
Randall Stutzman  
Terry Valen  
Martin and Karen Voss  
John Waugh  
Timothy Wolter  
Richard Ziemann

## **Henke Acres Fund in honor of Bill and Pat Henke**

Mark Preston Henke and Wendy Sheasby  
Mary Kaeding

## **Henke Acres Fund for MAPS and Motus Projects**

Pat Henke

## **Henke Acres Fund in Honor of Pat Henke**

Mark Preston Henke and Wendy Sheasby

## **For Henke Acres Trail Maintenance**

Kyle and Debbie Rogers  
Wendy Sheasby and Mark Preston Henke

## **Jim Schwiebert Butterfly House Fund**

Anonymous x3  
Aimee Beck  
Jack Daniel  
Eau Claire Area Chamber of Commerce  
Jacob Leinenkugel Brewing Co  
Marlin Mueller  
Lois and Steve Raether  
John R. Selin  
Kathryn Smith

## **Tom Thompson and Barb Menzies-Thompson Nature Education Fund**

Anonymous  
Gary and Opal Kunz  
Barb Menzies-Thompson  
Karen Possley  
Judy Voitek  
Anonymous in honor of Priscilla Capelle-Wilson and Bill Wilson

## **Adopt a Bird**

Jim Elmer  
Nya Harrington  
Glory Reuter  
Julia Strand  
Elke Swanson

## **Bird Banding Program**

Christopher and Jana Lind

## **Butterfly House Gardens**

Eau Claire Garden Club

## **To Purchase Burn Equipment**

Pheasants Forever - Chippewa Valley Chapter #544

## **Rural Collaborative Grant**

Compeer Financial

## **Turtle Fund**

Rachel Anderson  
Annette Copa  
Dana Dachel  
Heather DeLuka

District Office Sunshine Committee  
Eau Claire Community Foundation Dr. Joseph M. and Jean M. Tobin Family Designated Fund, Lois and Arnold Domer Fund, Community Fund, and David T. Bodeau and Family Fund  
Jennifer Fadness  
Anita Fairbanks  
Elizabeth Goodwin  
Alaina Halvorsen  
David Manor  
Gwenn Nyhagen  
Arrielle Opotowsky  
Sue Peterson  
Emily Revak  
Joe Turner  
Angela Weiss Goodwin  
Christina Wiedenhoft  
Mark and Karen Wise  
Megan Zich

## **Turtle Fund in honor of Kim Bodeau**

Rebecca White Body

---

## **Annual Mission Fund General Donations**

Anonymous x7  
3M  
3rd & Vine  
Carol Accola  
Amazon Smile  
American Gift Fund Thomas and Jaci Quigley-Quigley Family Charitable Fund  
Roy Anderson  
Ark Animal Hospital  
John and Marsha Arnette  
Richard Arnold  
Dean Arnold  
James and Donna Backus  
Baird Foundation, Inc. matching gift of Anthony Herbenson  
Birdsong Boatworks  
Dorothy Block

# DONATIONS 2023 *(continued)*

## **Annual Mission Fund General Donations** *(cont.)*

Don and Kim Bodeau  
Becky Bohlinger  
Kathy and Duane Brandner  
Jodi Bright  
Elena Carroll  
Chippewa Valley Mazda  
Ron Christianson and Ada  
Yarrington  
Francine Clark  
Matthew and Nancy Coffey  
Michael Colgan  
Co-Op Credit Union  
Michael and Cynthia Cragg  
Jordan Cruz  
Heather DeLuka  
Eau Claire Community  
Foundation Robert R.  
Southard Memorial Fund  
Eau Claire Community  
Foundation Nonprofit  
Professional Development  
Grant  
English Lutheran Church of  
Bateman  
Jennifer Fadness  
Sarah Fay  
Larry and Joan Giefer  
Jessica Harel  
Karen Havholm and Glenn  
Reynolds  
Anthony Herbenson  
Elizabeth Hess  
Ed and Beth Hicks  
Richard Horecki  
Rick Israel  
Cheryal and Stan Keisler  
Karen Lange  
Jim Lindberg  
Peggy McAloon  
James McCrady  
Richard Merrell  
Patricia and David Mertens  
Marion J. Meyer  
Bob Miller  
Dan and Karen Mittag  
Gunder Muller  
Martha Munger and Donald  
Mowry

James and Peggy Murray  
Peter and Barbara Nelson  
Northwestern Bank  
Francie Peardon  
William Phillips  
Karen Possley  
Darrell Quaderer  
Ramone's Ice Cream Parlor  
Kathleen Rogers  
Lisa Rove-Williams  
Samantha Ruppert  
Joe and Michelle Rupslauskas  
Debbie and Larry Sahm  
Donna and David Sanders  
Scheels of Eau Claire  
Dana and Jim Schroeder  
Judy and Jim Schwarzmeier  
Patricia Scott and Mark Ruddy  
John R. Selin  
Sherwood Foresters  
Snowmobile Club  
Damon Smith  
Joyce Smith  
Judith Snudden  
Denise Sprunk  
St James Trinity Lutheran  
Church  
Linda Stead and Linda  
Erickson  
Randall Stutzman  
Susan and Roger Tietz  
Trubilt Collision Center  
Joan Vandervelde  
Janet Voss  
Martin and Karen Voss  
Tom and Gloria Wagener  
Edith Wagner  
Mary Wagner  
Maryse Wells and Nate Krinke  
Wisconsin Association for  
Environmental Education  
Wisconsin State Patrol - NW  
Region - Eau Claire Post  
Mark and Karen Wise  
Joshua Zeman

## **General Donation through Benevity Community Impact Fund**

Anonymous  
Travis Boettcher

Gage Donkers  
Michelle Hager  
Joseph Rupslauskas  
Kristine Schoen

## **General Donation through Charities Aid Foundation**

Felicia Bergerson  
Carol Mikita  
Heather Nicolet  
Elizabeth Robert

## **General Donation through Thrivent Choice**

Kim K Harden  
Pamela A Harden  
Diane M Meuli

---

## **Memorials & Honorariums In memory of Raymond Butler**

Judy Foss

## **In memory of Ann Capelle**

Emily Dixon  
Cheryl Watson

## **In memory of Dave Hansen**

Carissa Ramseier

## **In memory of Sawyer Johnson**

Danica Johnson  
Tricia and Jared Johnson

## **In memory of Peggy Jones**

Mary Budd  
Dave and Pam Emerson  
Mary Rhodes

## **In memory of Ernie and Pat Ketner**

Marietta Ramseier

## **In memory of Donald and Phyllis Kurtz**

Janet Kurtz and Robert  
Morgan



# DONATIONS 2023 *(continued)*

**In memory of Ralph Lenhart**  
Pat Henke

**In memory of Garrett Markin**  
Patricia Dundas

**In memory of Karen McCrady**  
Pat Henke

**In memory of Lillian Norden**  
Annette Malone

**In memory of John Satorius**  
Lois Erdmann  
Judith Satorius

**In memory of James Smith**  
Joyce Smith

**In memory of Bruce Steger**  
Pat Henke

**In memory of Tom Thompson**  
Connie and Tim Russell  
Thomas Mihajlov  
Paula Utphall  
Terry and Judy Valen  
Mark Williams

**In memory of Bob Wathke**  
Anonymous

**In honor of Teresa O'Halloran  
and Jeremy Pohl**  
Kathleen Bergan Schmidt and  
Larry Schmidt

**Event Sponsor**  
**Maple Syrup Saturday**  
Roth Sugar Bush  
Hy-Vee

**Earth Day Every Day**  
Eco-Minded  
Eau Claire Energy Cooperative  
Festival Foods  
Hello Adorn  
Mayo Clinic Health Systems  
Menomonie Market Food  
Co-op  
Xcel Energy Inc

**In Kind Donations**  
Aging & Disability Resource  
Center  
Carol Cance  
Cascades Tissue Group  
Janice Charles  
Chippewa Valley Astronomical  
Society  
Bruce Coleman  
Tom Cousin  
Cindy Craig  
Sandra K Eustice  
Festival Foods  
Carol Flanigan  
Larry and Joan Giefer  
The Stump Man  
Julie Hayden  
Pat Henke  
Hy-Vee  
Ruth Kruger  
Karen Lange  
Spencer Lewis  
Gwenn Nyhagen  
Jon Paulson  
Karen Puckett  
Judy and Jim Schwarzmeier  
Julie Sharp  
Spectrum Industries, Inc.  
Lindamerry Udell  
Viking Sink Company  
Wiscale  
Zielies

**Memorial Bricks**  
Margaret and Paul Almquist  
Gerald Bauer  
Beaver Creek Reserve  
Endowment  
Don and Kim Bodeau  
Katharine and Weston  
Borreson  
Philip Bourdon  
Deborah Campbell  
Carollynn Carlock  
Craig Carlson  
Bill and Bev Childs  
Eileen Cvancara  
Anna Darnell  
Judy Dekan and Rick Koziel

Amy Delyea-Petska and  
Brendan Osborne  
Tom and Kathy Edwards  
Lynn Falch  
Barbara Field  
Greater EC BNI  
Heather Halverson  
Melissa Janssen  
Danica and Brent Johnson  
Cheryal and Stan Keisler  
Sandee Kosmo  
Christine Levenhagen  
Kathryn Lindsay  
Charles and Janice Lorentz  
Rachel Mattson  
Karrie Meier  
James Munger  
Carissa and BJ Ramseier  
Danielle Richardson  
Sarah Rykal  
Debbie and Larry Sahm  
Judy and Jim Schwarzmeier  
Sons of Norway Loven Lodge  
05-029  
Dale and Jacquie Staebell  
George Utphall  
Mary Wagner  
Debbie and Chuck Wells  
Liz White and Bekky Keller  
Christy and Adam Woodford



*Spring Field Trip, April 2024*

# GRANTS RECEIVED 2023

Besdany Kestrels, Nest Box Program.....	\$2,000
Eau Claire Community Foundation, Professional Development Grant.....	\$200
Eau Claire Community Foundation, Rural Collaboration Project.....	\$21,375
Eau Claire Community Foundation, Turtle Enclosure Expansion.....	\$7,100
Lake Wissota, Clean Boats Clean Waters.....	\$4,416
Lower Long Lake Association, Clean Boats Clean Waters.....	\$4,343
Nestle, Annual Mission Fund.....	\$2,500
Rod & Gun, Clean Boats Clean Waters.....	\$4,633
Sand Lake Association, Clean Boats Clean Waters.....	\$4,416
Pheasants Forever, Henke Acres Burn Equipment.....	\$3,000
USDA, Henke Acres Research (MAPS).....	\$3,061
Xcel Energy, Henke Acres Pollination Grant.....	\$5,000
Xcel Energy, Mussel Monitoring of Eau Claire County.....	\$9,376
3M Foundation, Nature Nooks.....	\$2,500

**Total: \$73,920**

# COMMUNITY PARTNER SPOTLIGHT



This year’s spotlight is the Eau Claire Community Foundation (ECCF). ECCF is a 501(c)(3) organization that invests various types of donations across the Chippewa Valley. Their mission is to *strengthen the community by offering donors opportunities to establish charitable legacies, by making grants, and by serving as a catalyst to address community needs.* In pursuit of this mission,

ECCF has been a large supporter of Beaver Creek Reserve over the years.

Recently, ECCF sought out Beaver Creek and helped us apply for a grant through Compeer Financial. In November of 2023, we were awarded \$21,375 to support five rural school districts to come to Beaver Creek Reserve for outdoor-based field trips. All field trip costs, including instructor time, education materials, transportation, and space were all covered by the Compeer Financial Grant. These field trips created core memories for students and teachers outside the classroom!

ECCF has also been a huge supporter of our snapping turtle, Snapper, and the expansion of his new enclosure. Through years of healthy growth, Snapper has already outgrown two tanks since he hatched here in 2011! We were able to create, purchase, and place Snapper in his new tank in early 2024 thanks to multiple funding sources, including \$7,100 in grant funding from ECCF, as well as donations from the Dr. Joseph M. and Jean M. Tobin Family Designated Fund, Lois and Arnold Domer Fund, Community Fund, and David T. Bodeau and Family Fund.

We have also received two professional development grants, and various programmatic grants to upgrade our recreation equipment and obstacle course elements through ECCF.

Thank you Eau Claire Community Foundation for your continued support of Beaver Creek, our mission, and our community!



*Donation check for Snapper’s new tank, June 2023*



# BEAVER CREEK NUMBERS

## Donations by the Numbers (Jan 1-Dec 31, 2023)

Total # of In Kind Donations: **39** (33 in 2022)

Total # of Event Sponsors: **9**

Total # of Donors: **665**

Average Donation: **\$503.54**

Total Checkout Donations: **\$3,444** (\$2,169 in 2022)

Total for Annual Mission Fund (through Dec 31, 2023) : **\$371,144**

Total Raised for Turtle Fund (since 2022) : **\$11,588**

## Beaver Creek by the Numbers (Jan 1-Dec 31, 2023)

Camper days (overnights): **30,580** (26,600 in 2022)

Field trips: **80 & 33 Earth Talks** (55 field trips in 2022)

Total kids from field trips: **3,090** (2,560 students in 2022)

Entrance rates: **13,549** walk-ins to the Nature Center (11,258 in 2022)

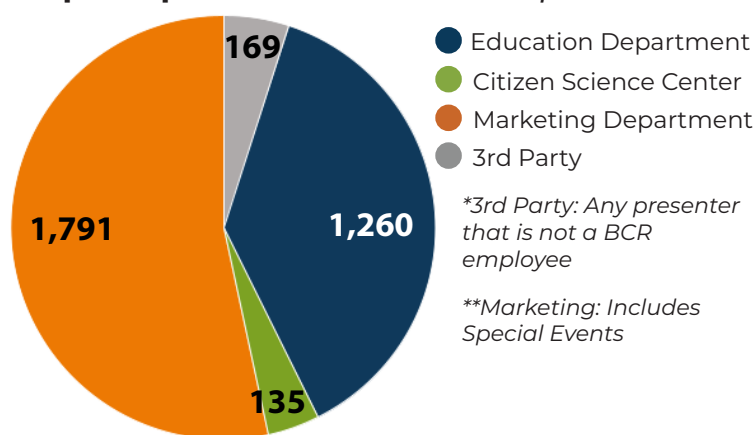
Month with most visitors: **August** with **3,896 visitors**

Total rentals in 2023: **421**

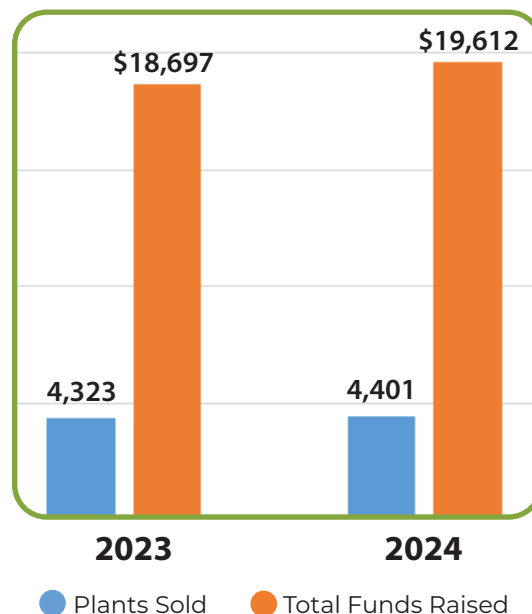
*\*Due to rolling memberships, total active members can be difficult to calculate on an annual basis*

Donate to our  
**Annual Mission Fund!**  
Help us cover the costs  
of smaller recurring,  
unexpected, or much  
needed updates!

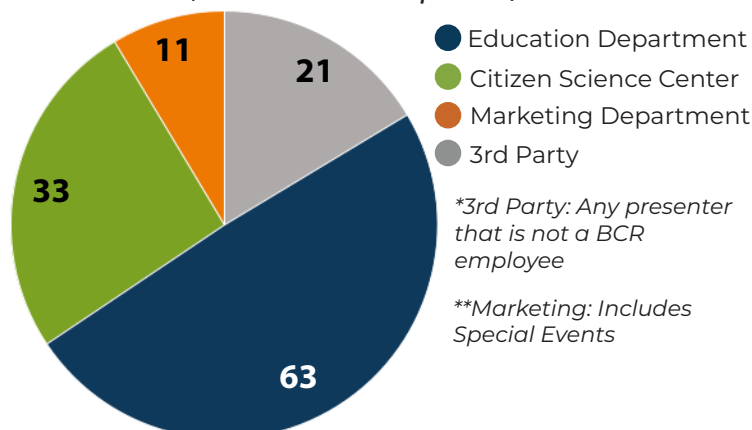
## Number of People Served Through Programs per Department (both virtual & in-person)



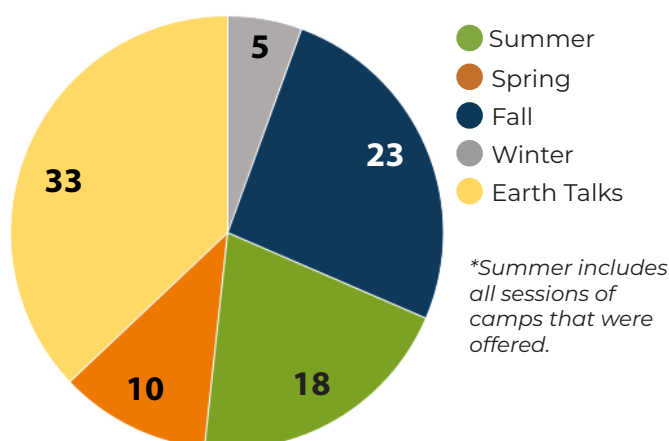
## Native Plant Sale Numbers



## Number of Programs Offered per Department (both virtual & in-person)



## Number of Field Trips Offered per Season

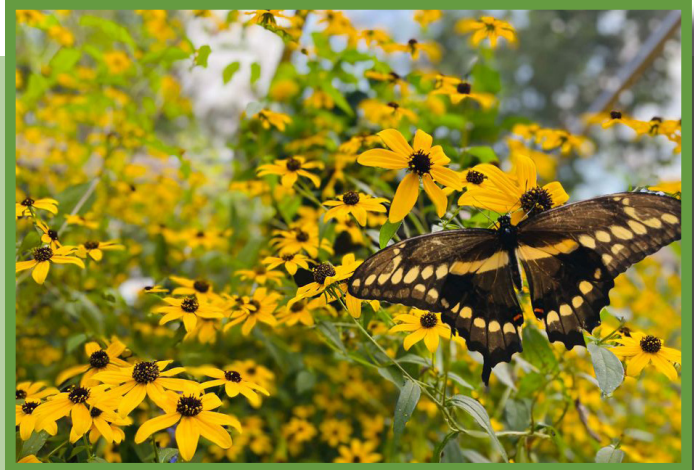


# What does your donation look like?

Because of your support, we can continue our mission of *connecting people with nature* by offering outdoor recreational opportunities and environmental education programs for people of all ages!



**Adventure Programs**



**Butterfly House**



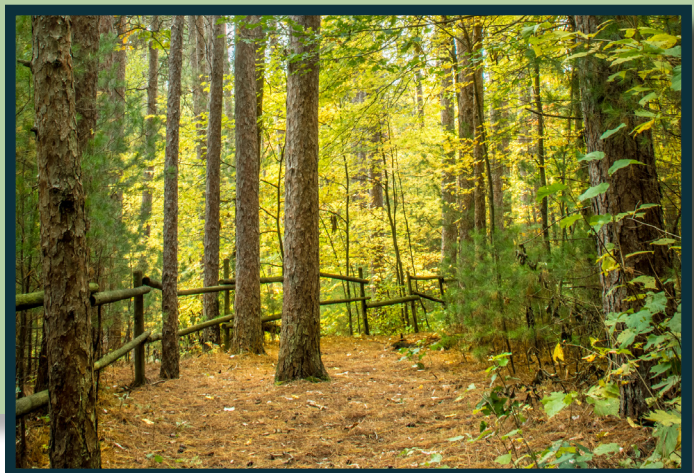
**Citizen Science Center**



**Field Trips & Summer Camps**



**Henke Acres**



**Trails & Gardens**