

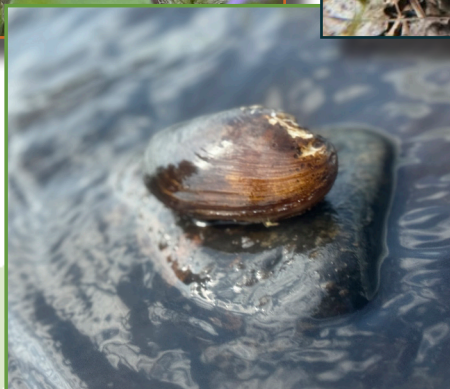
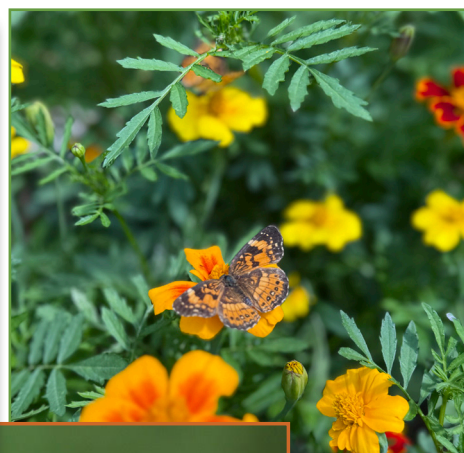
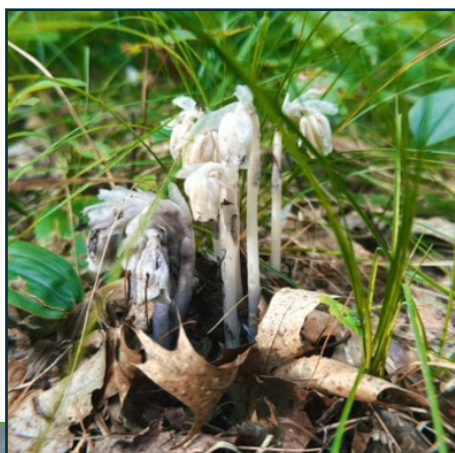
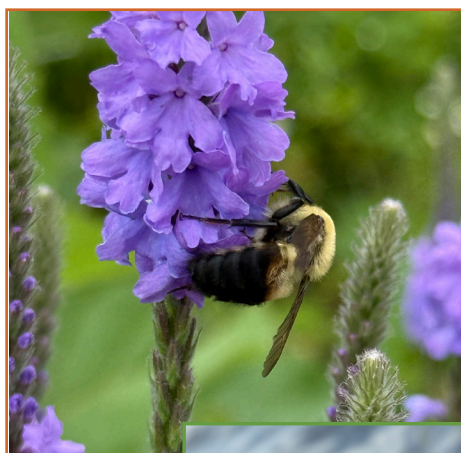
Annual Report 2025



Friends of Beaver Creek Reserve
Connecting People with Nature

TABLE OF CONTENTS

| | |
|------------------------------------|-------|
| Director's Report..... | 3-4 |
| Naturalist Report..... | 5 |
| Citizen Science Center Report..... | 6-7 |
| Solar Energy Production..... | 7 |
| Meet the Team..... | 8-14 |
| Board Members..... | 14 |
| Volunteer Report..... | 15 |
| 2026 Budget..... | 16 |
| Statements of Activities..... | 17 |
| Donations 2024..... | 18-21 |
| Grants Received 2024..... | 22 |
| Community Partner Spotlight..... | 22 |
| Beaver Creek Numbers..... | 23 |
| What Your Donation Looks Like..... | 24 |



DIRECTOR'S REPORT

Erik Keisler, Executive Director

Beaver Creek Reserve is living out the mission of *Connecting People with Nature* every day. One of the daily joys I benefit from in this job is watching those connections happen and seeing it reflected on the faces of our guests and members. This year Beaver Creek truly faced hurdles, but because of those hurdles we have had even more successes.

First, let me recall where we left off last year. We showcased our newly completed campus plan at last year's Annual Meeting which would allow for more potential program and learning spaces, fieldtrip locations, and the reshuffling of buildings to better align program uses, offices, and storage. All are now a priority as we have outgrown our traditional spaces over the last 10 years. We also shared that we had written a grant for a feasibility study on the expansion of our campus. That study is now complete, and we are starting to prepare for a capital campaign for the first time since the creation of the Citizen Science Center in 2002. As we identify our campaign timeline, we will announce its launch once future resources have aligned. If you are interested in helping with this future campaign's success, we could use your input in connecting our Board of Directors and me with additional funding sources and potential donors. If you have any questions or possible opportunities, I would love to meet with you and see how we can work together to achieve this shared vision.



I am also thrilled to share that we have received a transformational gift that was a direct result of the communications during the feasibility study. Beaver Creek Reserve was excited to accept a monetary gift and land donation from the Arnold Family. On August 26 this year, members of the Friends Board and Beaver Creek staff met with Dean and Richard Arnold to accept a 16-acre waterfront land donation on Lake Altoona. This undeveloped land is located at the mouth of Lake Altoona where the Eau Claire River enters the lake, and has been cared for by Dean and Richard, and their parents before them. In communications with the Arnolds, it is clear how much they love the land. I was also impressed with the stewardship over the years... From planting trees after the storm of 1980 to watching their mother record birds that visited, utilizing the site as a tree nursery, witnessing the changing of the seasons, and sharing various birds who used this space as a resting location. While Richard and Dean grew up summering on this property, I could see how the land grew and shaped these two brothers. It was abundantly clear that they were not only giving Beaver Creek a donation of land, but also are gifting their

childhoods to Beaver Creek. In doing so, they are also providing opportunities to children from all over western Wisconsin to come and explore the water, peninsula, and island that make up this donation.



We now have a new story for our guests and members. With the help of the Arnolds' donation, we can share a story about a single drop of water that starts at the headwaters of Beaver Creek at the Henke Acres. That drop of water now flows through the 330-acre research farm, moves downstream until it travels through the 400-acres of Beaver Creek Reserve, and empties into the Eau Claire River. From there that drop of water travels down river until it passes the Arnold site where campers, kayakers and various wildlife will enjoy it before emptying into Lake Altoona.

(Continued on next page)



DIRECTOR'S REPORT *(cont.)*

This location, being closer to the population centers of Eau Claire, Altoona, and Chippewa Falls, will also expand our reach into those communities and give greater access to programs and recreational opportunities. My hope is that this donation will offer the Chippewa Valley another way to connect to nature and help us reach even more people for decades to come.

As for the hurdles I mentioned earlier, if you were not aware, Beaver Creek received devastating news on April 28. We had lost our AmeriCorps funding, meaning that we would be without a third of our current staffing in the midst of our spring fieldtrip season, and preparing to serve five school districts through summer school camp contracts. We quickly shared a press release to inform the community how these cuts would affect not only our staff's lives, but also the thousands of students and campers arriving this summer. I was fortunate to meet with elected officials from various branches of government and both parties, and everyone conveyed that this action was not efficient and that they did not have prior knowledge of its implementation. In order to continue to serve our communities, we needed to fundraise to keep our AmeriCorps members. In the interim, we received word that donations were coming in from big and small donors alike. One donor, Lisa and Dick Erickson, made a challenge gift that helped spur even more giving and catapulted the

campaign to over \$130,000 raised in the month of May. Our annual fundraising goal for the year has typically been \$75,000. We were so moved by the outpouring of support that there were moments when we were moved to tears.



As a Director of a non-profit, my only hope is that our efforts are valued in the community and that the organization is relevant to meet the needs of people. Never did I expect that level of support in such a small amount of time! AmeriCorps funding was reinstated in June and we were able to re-enroll our six AmeriCorps members on July 3. This period of time from April-June was stressful and very difficult. I want to thank all of our Board members for their leadership, the community for coming together, and our AmeriCorps members who stayed with us to deliver amazing programs to our community who never even knew the level of stress they were going through. As a result of the program being reinstated, we only had to pay for three pay periods of staffing and have earmarked the remaining dollars to be added to the endowment as an insurance policy

if any future cuts would be made on a short-term notice. Beaver Creek is also still an AmeriCorps host site and we now have seven members this service term!

Lastly, I want to ask for your help in sharing the story of Beaver Creek Reserve and the amazing successes you heard about here. We need to continue making Beaver Creek stronger, and we can do that by inviting even more people to visit, attend programs, become members, volunteer on any level, and engage in real meaningful connections to nature. This year has been a remarkable testament to what we can achieve together. As we celebrate our successes, we look forward to building on this momentum and embracing the opportunities that this new year will bring.

-Erik Keisler,
Executive Director



NATURALIST REPORT

Megan Giefer-Schimmel & John Muetz, Naturalists

2024-2025 was an exciting year for the Education Team! We have had new additions and improvements to help us continue our mission of *Connecting People with Nature!*



Field Trips

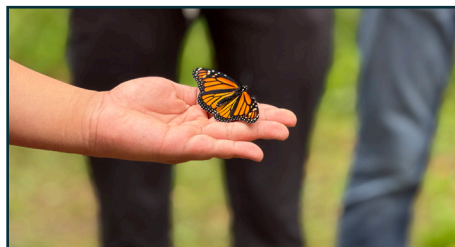
We saw over 3,724 students in 2024 (which is 724 more students than we had in 2023) come through our doors in the winter, spring, summer, and fall. We have continued our field trips to be 100% outdoors, year-round! We have four new AmeriCorps Environmental Educators on our team, as well as a new face to programming, our AmeriCorps Outreach Coordinator. She will be bringing new program ideas and educating people both on and off-site for Earth Talks.

We are continuing to improve spaces around Beaver Creek and enhancing the outdoor experience. The archery range will have a new look to it, the Nature Trail (orange trail on our North Campus) fencing will be repaired (which is used during almost every field trip), and we purchased new composite picnic tables from Weavers using grant funding we received from the Eau Claire Community Foundation.



Summer Camps

2024 summer camps offered a lot more opportunity for students in the Chippewa Valley to come out to Beaver Creek and connect with nature. Through our partnerships with five local school districts (Eau Claire, Chippewa Falls, Altoona, Augusta, and Fall Creek) almost 900 students were able to attend summer camps! That is about 200 more students than attended in 2023. We offered seven more summer camp opportunities in 2024 for a total of 32 camps. We are very happy to see our partnerships growing with local school districts, as it means more kids will be able to experience the joys of nature and excitement of summer camp. 2025 camps also saw a boom in participants thanks to the Eau Claire Area School District and Altoona bus transportation program, as well as a massive uptick in participation from Chippewa Falls families. We are still finalizing some numbers for the 2025 season, and I am excited to share them with you at the next Annual Meeting! All in all, 2024 and 2025 summer camps were a blast, and we hope to keep expanding access to this summer fun in years to come!



Butterfly House

In 2024, the Butterfly House saw almost 7,000 visitors walk through the doors! We are seeing more and more visitors coming out to Beaver Creek every

summer to seek adventure and knowledge from the Butterfly House. We have continued to utilize the billboards along I-94 East and I-94 West to advertise the House thanks to a grant we received from Visit Eau Claire. In addition to daily visitors, we also ran several Butterfly Camps for grades K-5.



Animal Ambassador Update

It is with a heavy heart that we have to report that our American Kestrel, Jack, has passed away. Through consultations with the University of Minnesota Raptor Center, we discovered that he had some underlying health conditions that were unknown to us when he joined us at Beaver Creek last year. In his time here, he spent his days working with our wonderful Education Team, training for public viewing, participating in enrichment activities, and feeling the breeze on his feathers in his new outdoor perch.

New to the Discovery Room, we have added a pair of Yellow Perch which are housed in Snappers' old tank. Come check them out! While you are in the Discovery Room, you will also notice that the signs in our animal enclosures have been updated with new information and exciting designs.

*-Megan Giefer-Schimmel &
John Muetz, Naturalists*

CITIZEN SCIENCE CENTER REPORT

Jeanette Kelly, Citizen Science & Education Director

The numbers don't lie! It was another busy year at the Citizen Science Center (CSC). Luckily for us, busy tends to mean fun, interesting and exciting. Busy means cool critters, beautiful places, new friends, and wonderful volunteers.

Lake Group Contracts

In 2025, the CSC completed contract work to conduct point-intercept surveys for Lake Marinuka (Trempealeau County) and Lake Wissota (Chippewa County). These point intercept surveys involved visiting points on a grid sample of the lake to sample for aquatic plants, sediment, and depth values. The data is then used to update management plans, lake data, and guide ongoing projects. For Lake Wissota, this project is ongoing as we continue to update their aquatic plant management plan using the point intercept data.

- Point Intercept Surveys: 233 Hours



Bat Monitoring

Every year the CSC coordinates the Acoustic Bat Monitoring program with the Wisconsin DNR. After training, volunteers venture out to survey different sites throughout Eau Claire and Chippewa County to determine the presence of Wisconsin's bat species! This year, Beaver Creek was also honored to host the

Wisconsin Master Naturalist Bat Ambassadors Program on site.

- Bat Programs: 1
- New Acoustic Monitoring Volunteers: 6
- Returning Volunteers: 5
- Bat Volunteer Hours: 36

Mussel Monitoring

Our freshwater mussels are vital to the health of Wisconsin waters. They are one of the most imperiled and underresearched groups in the world. Because of this, the CSC was inspired to continue conducting research and education efforts.

During 2025, the CSC designed and conducted our project, Mussel Monitoring of Chippewa County (MMCC). This research project was funded by Xcel Energy - Natural Resources Foundation for \$12,000. MMCC's goal was to survey 43 streams within Chippewa County for the presence of freshwater mussels, along with expanding outreach, education, creating a mussel list for the county, increasing citizen science engagement, and creating a mussel rescue group!

- Mussel Volunteers Trained: 60
- Citizen Science Hours: 64
- Programs Held: 4
- Education Events: 3



Lake Monitoring & Protection Network (LMPN)

This is a cooperative agreement with Eau Claire, Chippewa, Rusk, Dunn, Pepin, and Buffalo

Counties that involves the coordination of programs, education, and outreach focused around aquatic invasive species.

Clean Boats Clean Waters (CBCW)

- Total Watercraft Inspectors Trained: 8
- Total Participating Lake Groups: 5
- Total CBCW/Watercraft Inspection Hours: 930 (Paid & Volunteer)

Citizen Lake Monitoring Network (CLMN)

- Total CLMN Volunteers Trained: 8
- Total CLMN Sites: 31

Aquatic Invasive Species (AIS) Monitoring

- Total Sites Monitored (Wetlands, rivers, lakes): 15
- Incident Reports: 13

Events/Programs

- Total LMPN Programs: 18



Avian Monitoring Program (AMP) - Bird Banding

Beaver Creek Reserve has a federal bird banding permit. All banding projects require trained volunteers that capture birds and place metal bands on the birds' leg before releasing them.

(Continued on next page)

CITIZEN SCIENCE CENTER REPORT *(cont.)*

Weekly Feeder Bird – Est. in 1997

- Birds Banded: 211
- Species: 22

American Kestrel Nest Box Monitoring – Est. in 2002

- Nest Boxes Monitored: 26
- Kestrels Banded: 39
- Birds recaptured from previous years: 2
- Total Kestrels banded to date: 1,054

MAPS – Monitoring Avian Productivity & Survivorship at Henke Acres – Est. in 2003

- Birds Banded: 101
- Species: 22
- Birds recaptured from previous years: 39
- Total birds banded to date: 3,241



Northern Saw-whet Owl Migration – Est. in 2004

- Owls Banded: 180
- Birds recaptured from previous years: 36
- Recaptures from different locations, not Beaver Creek: 36
- Total owls banded to date: 1,890

Wood Thrush Motus Monitoring – Est. in 2024

- Wood Thrush captured and tagged with Motus transmitters: 11
- Wood Thrush tagged over the summers of 2023-2024: 21

Bird Monitoring

Bird monitoring projects do not involve capturing the birds. Most monitoring projects involve viewing birds from a distance or checking nest boxes.

Midwest Crane Count

- Counties counted: 2
- Count locations: 51

Bluebird Restoration Project

- Trails Monitored: 5
- Nesting Sites: 51



Christmas Bird Count

- Counts: 5

Bald Eagle Nest Watch

- Nests: 21
- Fledglings: 20

Thank you for all the support this past year through volunteering as citizen scientists and participating in our programming. It is exciting that even after almost 20 years, the Citizen Science Center keeps having fun and finding ways to grow and engage our community. Thanks to all who joined us for another busy year. Let's do it again next year!

*-Jeanette Kelly,
Citizen Science &
Education Director*

Solar Energy Production

Since August 2017, Beaver Creek Reserve's total solar production is **359,536.34 kWh**.

This is equivalent to...

Greenhouse gas emissions avoided by:



109 tons of waste recycled instead of landfilled

Carbon Dioxide emissions from:



34,711 gallons of gasoline consumed



56.5 homes' electricity use for 1 year

Carbon sequestered by:



5,101 tree seedlings grown for 10 years

MEET THE TEAM

Our team is currently made up of ten full-time staff, four part-time staff, and seven AmeriCorps members through the Marshfield Clinic Health Systems Community Corps AmeriCorps program. On the following pages, you will get to meet our staff and their roles here at Beaver Creek Reserve, learn about some of their hobbies and interests, and see what they've been up to this past year!



Ali Bowe

AmeriCorps Conservation & Volunteer Coordinator

Hi, I'm Ali! I am the returning AmeriCorps Conservation and Volunteer Coordinator at Beaver Creek Reserve! I am looking forward to continuing my connections with volunteers and creating more conservation volunteer opportunities. In my free time, I enjoy frolicing with my dog, bird watching, and camping. This summer, I had the opportunity to backpack in the Porcupine Mountains with my friends! I'm always looking to expand my hobbies and I am currently learning how to fly fish. I am so excited to learn and grow this year at Beaver Creek Reserve!

Bre Klockzien

Citizen Science & Aquatics Coordinator

Hi everyone! I'm excited to continue my journey here at Beaver Creek Reserve! This past year has been filled with many fun projects in the Citizen Science Center including freshwater mussel research, acoustic bat monitoring, aquatic invasive species monitoring, lake surveys, and more! It has been so great working with all of the incredible lake groups, non-profits, the DNR, and citizen scientists. Outside of Beaver Creek, I have been working hard in aerial arts, increasing my reading list, and exploring new places and countries. Recently, I was able to venture out to visit Greece and Italy! I'm excited about the year ahead!



Jeanette Kelly

Citizen Science & Education Director

This January will mark 15 years at Beaver Creek as the Citizen Science and Education Director. Like several staff members, I began as a volunteer. I was welcomed with smiles and open arms by the Bird Banding Crew — and all these years later, I'm still banding birds with some of those same wonderful people. I love the opportunities this role has provided me, not only professionally but also for my family. My kids, now 13 and 10, have grown up exploring Beaver Creek through camps, programs and volunteering. When not at Beaver Creek we love traveling, biking, reading, playing with the dogs and eating ice cream.

Ethan Schuelke

Maintenance Manager

I started “working” at BCR in January of this year. I can’t help but feel a bit of serendipity was involved to make it happen as I wasn’t expecting to be in need of a new career and I have never seen a job qualification requirement list so closely matching my personal interests and my resume. I am very grateful to have been accepted as part of the crew and have been completing maintenance projects as efficiently and enthusiastically as possible. All that aside, I can’t overstate the value of a group of people all equally committed to driving the growth and outreach of an organization and this is the first time I have experienced that in a workplace. What a delight it has been to help facilitate the mission of

Connecting People with Nature, a mission I take very seriously and have been able to extend to my family, who love to visit daddy at work. I love my new work family and so does my actual family. Looking forward to sharing in the growth of Beaver Creek Reserve for years to come.



Grace Bowe

AmeriCorps Environmental Educator

Hi, my name is Grace Bowe, and I am starting my second year as an AmeriCorps Environmental Educator here at Beaver Creek! I recently graduated from the University of Wisconsin-Eau Claire with a degree in Environmental Geography and a certificate in water resources. I also have a research background exploring the fluvial geomorphology of the Eau Claire area. During my senior year, I found my love of environmental education at UWEC. I am passionate and curious about environmental conservation, water recreation, herbalism, and the accessibility of outdoor skills for all! I grew up in the Chippewa Valley, and I am so excited to share my love of Wisconsin ecology during my time at Beaver Creek Reserve. During my free time, you can find me out in the woods looking for mushrooms, knitting with my cat, or spending time with my loved ones. I am so excited to continue my time here at Beaver Creek, and I am eager to see what this year has in store for me!

Lucy Soulliere

AmeriCorps Outreach Coordinator

Hi, everybody! My name is Lucy, and I am thrilled to be joining Beaver Creek this year as the AmeriCorps Outreach Coordinator. I’m originally from Virginia, where I first fell in love with nature watching woodcocks perform their springtime displays. That sparked a lifelong love for birdwatching, which eventually led to me getting a degree in Organismal Biology and Ecology from Colorado College, where I graduated in 2024. After graduation I began working in field ecology, and this past year I worked in Australia as a field technician with a fairywren monitoring project, and in California doing grassland bird surveys. Between that fieldwork experience, and past experiences teaching about nature and leading volunteer groups, I discovered that my passion really lies in fostering connection between communities and the natural world... Leading me here to Beaver Creek! Outside of work, I enjoy a meandering hike, swimming, pottery, card games with friends, and of course some birdwatching. I can’t wait to find out what adventures this year has in store!





Jim Schwiebert

Naturalist

Land management at Beaver Creek remained both challenging and rewarding this year. We conducted another prescribed burn on the Henke property and were able to snow-seed last year's burn area with some prairie seeds collected by hand from the property. Knapweed continues to require monitoring with some spot-spraying but is mostly controlled. Plans remain in place to continue an annual rotation of small burn units throughout the prairie areas.

Other invasive species also demanded attention. A small patch of garlic mustard is now under control near the Nature Center, and we are continuing to monitor and stem treat common buckthorn at BCR. Years of treatment are ahead, and it may never be fully controlled, but progress is being made. A few stems of glossy buckthorn were found and treated at the Henke property and monitoring will be necessary to watch for more.

Beyond fieldwork, I continue to enjoy sharing Beaver Creek with others through leading hikes, teaching foraging and tree-ID classes, guiding snowshoe-lacing workshops, and serving as an instructor for the Master Naturalist training program.

Outside of work, I'm happiest outdoors: hiking, biking, canoeing, fishing, foraging, and mushroom hunting. There's always something new to discover just beyond the trail.

John Muetz

Naturalist

My name is John Muetz and I have almost completed my fourth year as a Naturalist. I have been involved with Beaver Creek in many capacities over the years, starting out as a summer Naturalist Intern, working as an Office Assistant, and working on preserving and recording Beaver Creek's long history of environmental education as an AmeriCorps member. My background is in social studies education, but I have always had a passion for studying environmental history and how human beings shape, and are shaped by, the natural world. Over the past year I have enjoyed fine tuning our maple syrup operation, working with all of the great volunteers in the native plant sale, running summer camps, and seeing students from all over the Chippewa Valley for field trips! I am also very proud to share that my family has grown this year! My wife Alison and I welcomed our son August into the world this spring, and he is already a little explorer. You will be sure to see him around Beaver Creek!



Julie Felske

Membership & Donation Manager

This November I will celebrate my tenth year at Beaver Creek as the Membership and Donation Manager. Before I was an employee, I volunteered as a Nature Center weekend host for many years. Beaver Creek Reserve has been a part of my family's lives since we moved to the Chippewa Valley 18 years ago. My kids have grown up going to summer camps, attending family programs, hiking the trails, and now working as volunteers. My oldest volunteers in the Caterpillar Lab in the summer months and my youngest helps out at special events. When we aren't at Beaver Creek, you can find us hiking, biking, kayaking, camping, and exploring.

Julie Mead

Bookkeeper

I'm finishing up my second year as bookkeeper at Beaver Creek. My family has been hiking the trails and volunteering here for many years, and working here is another way I've stayed connected to a place we've grown to love.

In addition to bookkeeping tasks, payroll, and financial reporting, I provide support to the director and staff for their decision-making and grant writing needs. I have to work a little harder than most to get my daily dose of nature, since the nature of my job allows me few opportunities to enjoy what is in my nature.

The highlight of this past year was a very special family vacation. Most summers my family rents a house on the beach in North Carolina for one of our favorite get-aways. This year we had with us 3 of our children, our 3 grandchildren, and my mom and dad. It was the first time my parents had met their great-grandchildren. Besides the wonderful family bonding and the fabulous food, we enjoy long walks on the beach, touring the Karen Beasley Sea Turtle Hospital, and petting a leopard gecko at the Topsail Aquarium. Top it all off with a stop at the Albanese candy factory and a visit to some very special residents of the International Crane Foundation on the way home made the perfect holiday.



Kirsten Holmes

Office & Operations Director

This year marks my 10th year at Beaver Creek Reserve, where I serve as the Office and Operations Director. One of my proudest moments in this role was getting to meet with Governor Tony Evers and help advocate for our AmeriCorps Members. We were so grateful to have them reinstated and are excited to welcome a whole new crew just starting—we look forward to a wonderful year ahead with them. Outside of work, I enjoy spending time with my husband Edward, my Aunt Edith—who moved to Eau Claire two years ago to be closer to family—and my two sons. My oldest recently graduated from high school and is now attending CVTC for the Med Fire Program, while my youngest is a junior

excelling in school and will be performing in his school's rendition of The Wizard of Oz this October.

Mackenzie Curtis

Nature Center Assistant & Citizen Science Technician

Hi, I'm Mackenzie and I've been working at Beaver Creek for a little over three years now. I was previously the Office Assistant at the Nature Center but have taken on more responsibilities during the last year that have allowed me to change positions to Nature Center Assistant and Citizen Science Technician. My main responsibility is still working at the Front Desk where I get to interact with visitors from day to day, so stop in and say hi sometime! I always like hearing about what brings people to BCR and the adventures they have while they are here. Within the last year I've also gotten the opportunity to help out on several different citizen science projects including bird banding, mussel monitoring, and AIS monitoring to name a few. I love getting to spend my summer outside doing field work whether it's working with birds at Henke Acres or strolling through streams looking for mussels!





Kim Cesafsky

Nature Center Coordinator

Hi everyone! I'm Kim Cesafsky, the Nature Center Coordinator here at BCR. I've been part of this amazing team for 2 years now, and the best part of my job is YOU - our incredible staff, volunteers, donors, members and guests. Your kindness, generosity and dedication truly make a difference. This place is already a hidden gem, so thank you for making it even more special!

My husband Chris and I are passionate about nature and love spending time outdoors. This year, we raised 60 Monarch butterflies and 39 moths. We also welcomed a very special turtle to our koi and frog pond... Be sure to ask me about our turtle story sometime!

Our backyard has been bursting with life, from the cheerful songs and vibrant colors of the birds that made their homes here, to the 29 curious bear visits we've had (yes, 29!). It's safe to say our home has become a mini-wildlife sanctuary, or as my brother likes to call it... a ZOO!

Erin McMichael

AmeriCorps Environmental Educator

Hello! My name is Erin McMichael, and I am thrilled to be serving as an AmeriCorps Environmental Educator at Beaver Creek Reserve. I graduated from the University of Wisconsin-Eau Claire in the spring of 2024 with a Bachelor of Science in Ecology and Environmental Biology. After graduation, I served a short term as a Clean Water Corps member with the Conservation Corps in Northern Minnesota where I co-led a nature-focused youth summer camp and after-school program. Since then, I returned to my hometown of Hudson, Wisconsin and worked as an Interpretive Naturalist at Crystal Cave. Outside of work, I enjoy hiking, kayaking, crafting, and spending time with my cat, Bug! I am very excited to learn and grow as an educator throughout this year!



Megan Giefer-Schimmel

Naturalist

As we close out 2025, I'd like to reflect on all the great things that have happened this year! This spring, I celebrated my sixth year at Beaver Creek and seventh season with the Butterfly House. We had a great season, with almost 7,000 visitors coming out to Beaver Creek to see native Wisconsin butterflies and plants! In the late summer and early fall, we tagged 100 Monarch butterflies with volunteers, staff, Wildlands Charter School middle school, Youth Leadership Eau Claire, and Venture Academy 5th graders! We also had a very successful Wisconsin Master Naturalist Volunteer Training this year.

In the fall of 2024, Steven and I got married in Duluth, MN (our very favorite place)! It was the perfect day, the sun was shining, and the weather was great! This past May, we went on our honeymoon to Ireland! We traveled all over the country, had amazing food and drinks, and went on many adventures. My favorite part was biking around the Aran Islands, where the famous sweaters are made. I am excited for what 2026 has to offer!

Tori Lindert

Marketing & Media Coordinator

Hello! I am just beginning my second year here at BCR as a full-time staff member (but I've been on the team since 2022). What a journey it's been working here! This past year, I spent a lot of time working to add new signage around Beaver Creek (if you haven't seen our new turtle tank, check it out!), as well as post on our social media pages, and assist in running our special events. I'm super excited to be running my own program in a few weeks. I had quite a few firsts this year: my first TV/news interview, my first time visiting our MAPS station, and my first time mussel monitoring!

There hasn't been a ton happening in my personal life. My husband Ryan and I just got back from a trip to Universal Studios in Florida to check out the new park which was a blast! This spring, I visited Sax-Zim Bog with Megan & Kristen and got to see a Great Grey owl! Over the summer, I spent a lot of time helping my mom with kitten rescues in Pardeeville, swam and kayaked, and of course gave lots of snuggles to my sweet cat, Hazel. Cheers to another year full of fun memories and adventures. I hope to see you around.



Mackenzie Miner

AmeriCorps Environmental Educator

Hello everyone! My name is Mackenzie Miner and I am so beyond excited to serve as an AmeriCorps Environmental Educator this year! I am originally from Oconomowoc, Wisconsin, but I just graduated this May from UWEC with a degree in Ecology and Environmental Biology with a certificate in Water Resources. After completing an internship this summer with the Milwaukee Public Museum working on a museonomics project with moths in the Erebidiae family, I am so excited to find myself back in the Eau Claire area! I am incredibly passionate about insects and cannot wait to share all the fun bug facts to the community! Outside of work you can find me camping with friends or picking up a new craft! I am excited for what this year will bring!

Kristen Giefer

Marketing & Program Director

I just started my sixth year here at Beaver Creek, and this past year was extra exciting! I co-led three Urban Nature Adventure Trolley Tours in Eau Claire alongside our Naturalists for the Chippewa River Trolley Company. Back in June, I took the Karner Volunteer Monitoring training and helped monitor for Karner Blue butterflies. And we performed another prescribed burn at the Henke Acres this spring with 13 of our staff and volunteers, which is something I look forward to every year!

In my free time, I also went on a few trips! Back in March, I went to Sax-Zim Bog in Meadowlands, MN with Megan and Tori to look for owls, and we ended up seeing a Great Grey owl right as it was getting dark! Then in May, Megan and I went on our annual sister's backpacking trip to the Porcupine Mountains in Upper Michigan. I also traveled to Tennessee later that month with my family where we explored Nashville and Memphis. In July, we went to the Boundary Waters for four days, where we paddled many miles, made delicious camp meals, and played a few rounds of cribbage. And exciting news... I adopted a little black kitten named Ozzy. Here's to another exciting year!



Peter Laskin

AmeriCorps Environmental Educator

I'm excited to start my term as an AmeriCorps Environmental Educator here at Beaver Creek! I graduated from Harvard University in 2023 with a degree in Integrative Biology, and I've been working in environmental education ever since, including a previous AmeriCorps term with the Lakes Region Conservation Corps in central New Hampshire. I grew up in Cambridge, Massachusetts, but have spent a significant amount of time visiting family in the great state of Wisconsin, and I look forward to experiencing an entire seasonal cycle here. Off the clock, I enjoy hiking, cycling, reading, and solving (and occasionally constructing) crossword puzzles. I'm a fan of insects and other arthropods, and my favorite group of all is Ptychopteridae, the phantom craneflies (not pictured).



Santiago Tabares Erices

AmeriCorps Avian Field Technician

Hello! My name is Santiago Tabares Erices, and I am super excited to be serving as the AmeriCorps Avian Field Technician at Beaver Creek! I grew up near Denver, Colorado, where I developed a love for birds and nature as a volunteer for the Bird Conservancy of the Rockies' bird banding stations. I graduated this past spring with a BS in Environment and Sustainability from Cornell University, where I researched torpor and preen oils. I'm passionate about conservation and sharing the outdoors with others. I love community science initiatives and am excited to work alongside volunteers on a variety of bird monitoring projects at Beaver Creek. When I am not exploring the natural world, you can find me reading, baking, or rock climbing!

Board of Directors

John Kleven
President

Christopher Gierhart
Vice-President

Mark Wise
Treasurer

Heather DeLuka
Secretary

Troy Anderson

Cameron Bump

Warren Gallagher

Wendy Hollenbeck

Brianne Markin

Tami Schraufnagel

Mike Shea

Kim Yoder

Endowment Committee

Jim Murray
Chair

Martin Voss
Vice-Chair

Denny Shea
Treasurer

Rick Koziel

VOLUNTEER REPORT

Hours recorded from:
January 1 - December 31, 2024

Total Hours: 7,965
Total Volunteers: 870

| Department | # Volunteers | Department Total Hours | Sub-Department Total Hours | % Hours |
|-----------------------------|--------------|------------------------|----------------------------|---------|
| Beaver Creek Reserve | | | | |
| Beekeeping | 6 | 1519 | 36 | 2% |
| Maple Syrup | 18 | | 98 | 6% |
| Nature Center Host | 54 | | 1367 | 90% |
| Rental Room | 13 | | 18 | 1% |

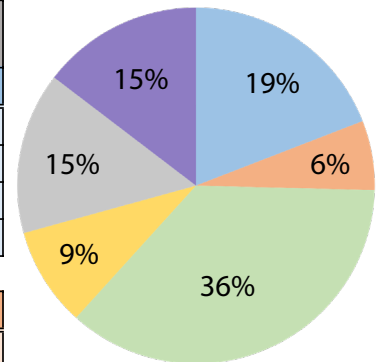
| | | | | |
|------------------|----|-----|-----|-----|
| Butterfly | | | | |
| House | 34 | 499 | 372 | 75% |
| Lab | 29 | | 127 | 25% |

| | | | | |
|-------------------------------|----|------|-----|------|
| Citizen Science Center | | | | |
| Bird Banding: Weekly | 41 | 2895 | 930 | 32% |
| Bird Banding: MAPS | 8 | | 341 | 12% |
| Bird Banding : Owls | 39 | | 795 | 27% |
| Avian Monitoring | 28 | | 263 | 9% |
| Nest Box Monitoring: Kestrel | 8 | | 130 | 4% |
| Bat Monitoring | 31 | | 75 | 3% |
| Christmas Bird Count | 25 | | 265 | 9.2% |
| Aquatic Invasive Species | 29 | | 96 | 3% |

| | | | | |
|----------------------------------------------------|---|-----|-----|-----|
| Hobbs Observatory | | | | |
| CSC: Radio Astronomy | 3 | 720 | 219 | 30% |
| Astronomy Outreach | 7 | | 479 | 67% |
| Miscellaneous (repairs, cleaning astronomy update) | 2 | | 22 | 3% |

| | | | | |
|------------------------------|-----|------|-----|-----|
| Maintenance | | | | |
| General/Facility Maintenance | 74 | 1172 | 365 | 31% |
| Trail Maintenance | 281 | | 807 | 69% |

| | | | | |
|------------------------------|----|------|-----|-----|
| Events | | | | |
| Candlelight Snowshoe Hikes | 6 | 1160 | 28 | 2% |
| Maple Syrup Saturday | 6 | | 24 | 2% |
| Greenhouse/Native Plant Sale | 43 | | 280 | 24% |
| Nature Nuts | 55 | | 706 | 61% |
| Butterfly Fest | 10 | | 59 | 5% |
| Boofest | 5 | | 18 | 2% |
| Holiday Crafting for Kids | 15 | | 45 | 4% |



- Beaver Creek Reserve
- Butterfly Program
- Citizen Science Center
- Hobbs Observatory
- Maintenance
- Special Events



Maintaining North Campus trails for Dairyland Power Cooperative Day of Service, Sept 2024



Cleaning up Nature Nooks and spreading mulch for United Way's Day of Caring, Sept 2024

Thank you to all our volunteers for such a successful year! From running a docent table in the Wise Nature Center, to helping raise Monarch butterflies in our Caterpillar Lab, or monitoring for mussels, Bald Eagles, and Bluebirds... we couldn't do what we do without YOU!

Friends of Beaver Creek Reserve 2026 Operating Budget

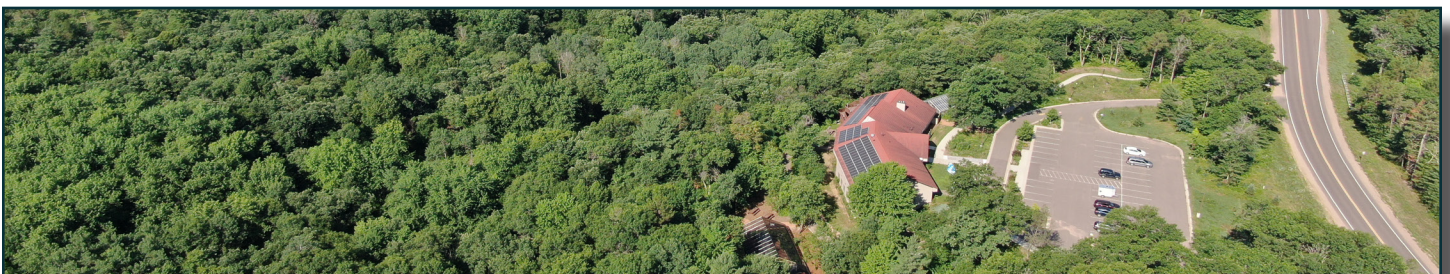
| Income | 2025 Budget | 2025 Jan-Jul | 2026 Budget |
|------------------------|------------------------|-------------------------|------------------------|
| <i>Donations</i> | 86,179 | 184,329 | 90,488 |
| <i>Memberships</i> | 76,578 | 44,459 | 80,407 |
| <i>Grants</i> | 316,831 | 167,017 | 332,673 |
| <i>Fees</i> | 221,960 | 107,581 | 233,058 |
| <i>Special Events</i> | 38,937 | 32,842 | 40,884 |
| <i>Gift Shop</i> | 31,890 | 22,940 | 33,485 |
| <i>County Contract</i> | 180,000 | 90,000 | 180,000 |
| <i>Miscellaneous</i> | 7,034 | 353 | 7,386 |
| Total | 959,409 | 649,520 | 998,379 |

Expenses

| | | | |
|------------------------------|----------------|----------------|----------------|
| <i>Wages/Benefits</i> | 666,180 | 464,955 | 699,489 |
| <i>Maintenance/Utilities</i> | 86,899 | 89,966 | 91,244 |
| <i>General Operations</i> | 175,625 | 186,419 | 184,406 |
| <i>Gift Shop</i> | 15,194 | 6,454 | 15,954 |
| Total | 943,898 | 747,794 | 991,093 |

Capital Improvement Budget

| | | | |
|------------------|----------------|----------------|----------------|
| <i>Donations</i> | 225,369 | 594,181 | 236,637 |
| <i>Expenses</i> | 50,162 | 431,098 | 52,670 |
| Balance | 190,717 | 163,083 | 183,967 |



**FRIENDS OF BEAVER CREEK RESERVE
STATEMENTS OF FINANCIAL POSITION
DECEMBER 31, 2024 AND 2023**

| ASSETS | 2024 | 2023 |
|-----------------------------------------------|-------------------------------|-----------------------------|
| CURRENT ASSEST | | |
| Cash and Cash Equivalents | \$334,313 | 364,370 |
| Accounts Receivable | \$2,270 | 17,242 |
| Grants Receivable | \$20,822 | 81,984 |
| Inventory | \$14,929 | 14,311 |
| Prepaid Expenses | \$27,000 | 28,575 |
| Total Current Assets | <u>\$399,334</u> | <u>506,482</u> |
| PROPERTY AND EQUIPMENT | \$1,609,344 | 1,573,757 |
| INVESTMENTS | \$1,930,317 | 1,700,819 |
| OTHER ASSETS | | |
| Funds Held at Eau Claire Community Foundation | <u>\$196,393</u> | <u>157,529</u> |
| Total Assest | <u><u>\$4,135,388</u></u> | <u><u>3,938,587</u></u> |
| LIABILITIES AND NET ASSETS | | |
| CURRENT LIABILITIES | | |
| Accounts Payable | \$9,834 | 30,495 |
| Accrued Expenses | \$71,200 | 60,845 |
| Deferred Revenue | \$6,955 | 7,721 |
| Total Current Liabilities | <u>\$87,989</u> | <u>99,061</u> |
| NET ASSETS | | |
| Without Donor Restrictions: | | |
| Designated by Board for Endowment Fund | \$531,807 | 528,946 |
| Undesignated | \$1,729,288 | 1,882,988 |
| Total Without Donor Restrictions | <u>\$2,261,095</u> | <u>2,411,934</u> |
| With Donor Restrictions: | \$1,786,304 | 1,427,592 |
| Total Net Assets | <u>\$4,047,399</u> | <u>3,839,526</u> |
| Total Liabilities and Net Assets | <u><u>\$4,135,388</u></u> | <u><u>3,938,587</u></u> |



DONATIONS 2024

Endowment

Citizen Science Center Fund

Anonymous
John and Alice Droske
Dave and Linda Kragness
Lisa and Ted Ludwig
Barbara MacNaughton
Sarah and Greg Newman
Tami and Bob Schraufnagel
Judy and Jim Schwarzmeier
Martha and Michael Terry in
memory of Lloyd and Anna
Ohl
Wendy and Jeffrey Tucker



Doug and Kate Lindsay Adventure Fund

Anonymous in memory of
Judy Schrauth
Craig and Gail Carlson
Allen and Mary Jo Fleming
David and Evalyn Frasch
Alec Lindsay and Kate Teeter
Kathryn Lindsay
Elizabeth and Ziad Lindsay-
Qureshi
Pat McKearn and Richard
Smith
Joyce McManus
Daniel and Karen Mittag
Sue and Doug Pearson
Karen Possley
Dianne and Ron Powers
Nancy and Michael Spak
Wendy and Jeffrey Tucker



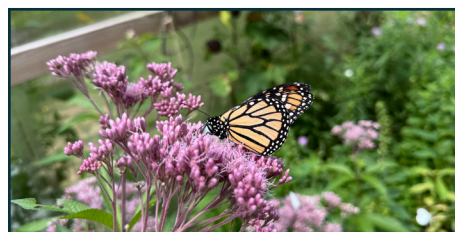
Henke Acres Fund

Virginia Baker
Jack and Carolyn Daniel
Pat Henke
Dave and Linda Kragness
Debbie and Kyle Rogers
Judy and Jim Schwarzmeier
Wendy Sheasby and Mark
Preston Henke in honor of
Pat Henke
Wendy and Jeffrey Tucker



Jim Schwiebert Butterfly House Fund

In honor of Deb Mathson
Linda Borkenhagen
Jeanette Pochebut
Patty Sumner
Michelle Brettingen
Jeff and Kristen Brown
Elaine Carlson in memory of
Robin Jelinek
Larry and Joan Giefer
Pat Henke
Rick and Judy Israel
Meg Kunze
Catherine and Bill McCann
Mary McManus in honor of
Emma Barnett
Sylvia Oberle
Ruby Onesti in memory of
Aubree Harrison
Steve and Lois Raether
Kelvin and Shirley Ruesch
Kenneth and Vickie Schafer
Patty Sumner
Wendy and Jeffrey Tucker



Tom Thompson and Barb Menzies-Thompson Nature Education Fund

Anonymous x2
Karen and William Bejin
Terri Buhrow
Pat McKearn and Richard
Smith
Nancy and Michael Spak
Wendy and Jeffrey Tucker
Gerald and Joan Vandervelde



General Endowment Fund

Anonymous x3
Amy Alpine and John Grump
Richard Arnold
Marlene Arntson
Rick and Sandy Ayres
Thomas and Jill Barland
Greg and Mary Barnes
Bruce and Barbara Bayley
Jackie and Ed Belka
Terry and Susan Borman
Duane and Kathy Brandner
Thomas Bruckner
Michael and BebeAnna Buck
Sharon Bussard
Paula and Andy Bussman
Nickolas and Regina Butler
Carolyn Buvala
Ron Christianson and Ada
Yarrington
Kathy Clark
Jack and Linda Corey
Eileen Cvancara
Bob and Merrelyn Dawson
Jim and Carolyn Dunning
Katherine Duplessie
Eau Claire Community
Foundation Richard J.
Ziemann Fund
Lisa and Dick Erickson

(Continued on next page)

DONATIONS 2024

General Endowment Fund

(cont.)

Karlyn and Terry Etheridge
Janet Etnier
Fall Creek Lions Club
Ray and Mary Fandel
Steven and Kim Gillett
Janet Goodwin
John and Vicki Graaskamp
Pat and Gary Gray
Lawrence and Patricia Griffin
Albert and Beverly Harper
Helen Hartmann
Don and Mandy Heard
Ed and Beth Hicks
Daniel Hoy and Mary Kenosian
Tom and Pam Janssen
Erik Keisler and Katie Stolp-
Keisler
Herbert H Kohl Charities
Rick Koziel and Judy Dekan
Gary and Opal Kunz
Carol Larson
Robin Leary
Jim Lindberg
John and Jane Lokken
David Lundberg
Clint and Brianne Markin
Deb and Dennis Mathson
James McCrady
Yvonne Melville
Roger and Kathi Michelson
Karen and Daniel Mittag
Gregg and Emily Moore
Joe and Joy Motto
Ronald Nixdorf
Ed and Carol Nogosek
Martha and Michael O'Halloran
Robert and Juanita Peck
Karen Possley
Merey and Jerry Price
Dianne and Timothy
Robertson
Jane Schley and Lisa
Herrmann
Judy and Jim Schwarzmeier
John R. Selin
Dennis and Luanne Shea
Brad and Jan Smith
Ardath Solsrud

Catherine Southard
Sunrise Exchange Club
Rick Swenson
Wendy and Jeffrey Tucker
Terry and Judy Valen
Judy Voitek
Tom and Sheila Zahorik
Keith and Debra Zehms
Larry Zorn

Annual Mission Fund General Donations

Anonymous x10
Carol Accola
Alter Trading Corporation
Roy Anderson
Dean Arnold
Don and Kim Bodeau
Gregg and Barb Bohlig
Jodi Bright
Michael and Sandra Brown
Paula and Andy Bussman
Campaign Fund of Nickolas
Butler
Sam and Julie Campbell
Chippewa Valley Astronomical
Society
Chippewa Valley Watercolor
Club
Dennis and Antoinette
Ciesielski
Co-Op Credit Union
Eau Claire Community
Foundation William A.
Bingham Family
Endowment Fund
English Lutheran Church of
Bateman
FJ Enterprises LLC
Mary Foote
Warren Gallagher and Stella
Pagonis
Joan and Larry Giefer
Janet Goodwin
Habitual Yoga Space
Barb Hansen
Karen Havholm and Glenn
Reynolds
Pat Henke

Patty Henry
Georgia Janssen
Chrissy Johnson
Rich Kahl and Laurie Yahr
Cheryal and Stan Keisler
John R. Kleven
Margaret and James Koerner
Sandee Kosmo
Susan Luthy
David Manor
Keith and Alison Martin
Peggy McAloon
James McCrady
Patricia and David Mertens
Marion J. Meyer
Gregg and Emily Moore
Joe and Joy Motto
Sheryl Mueller
Martha Munger and Donald
Mowry
Northwestern Bank
Lisa Pearson
Robert and Juanita Peck
Pleasant Hill Go-Getters
Karen Possley
Ramone's Ice Cream Parlor
Christy Reppe
Joe and Michelle Rupslauskas
Dana and Jim Schroeder
Beverly Shelley
Sherwood Foresters
Snowmobile Club
Joyce Smith
Briene Smith
Nancy and Michael Spak
Linda Stead and Linda
Erickson
Patricia Stoffers
Susan and Roger Tietz
Trubilt Collision Center
Wendy and Jeffrey Tucker
Joe Turner
Christine and James Vaudreuil
Johanna Warloski
Maryse Wells and Nate Krinke
Chuck and Debbie Wells
Mark and Karen Wise

(Continued on next page)

DONATIONS 2024

Annual Mission Fund

(cont.)

American Gift Fund

Patrick Quigley-Quigley Family
Charitable Fund

Benevity Community Impact Fund

Megan Casper
Michelle Hager
Humana
Jamf
Kohl's
Robert Millen
Amanda Reidt
Joseph Rupslauska
UHG

Blackbaud Giving Fund

Chandra Steinke

Charities Aid Foundation

Anonymous
Ann Brown
Carol Mikita
Elizabeth Robert

Thrivent Choice

Kim Harden
Vicki Littlefair
Diane M Meuli

For Nature Nook Upkeep & Butterfly Gardens

3M

For the Butterfly House

Eau Claire Garden Club
Lake Wissota Garden Club

For Henke Acres Trail Maintenance

Debbie and Kyle Rogers

For Program Sponsorship

Jacob Leinenkugel Brewing Co
Scheels of Eau Claire

For Field Trip Support and Outreach

Nordson Corporation
Foundation

For Pollinator Programs

Alan Barak

For Port a Potty Pumping

Judy and Jim Schwarzmeier

For Wood Thrush Motus Project

Jan Stirm

For Citizen Science Center Bird Programs

Christopher and Jana Lind

For Recreation Equipment Upgrades

Eau Claire Community
Foundation Dick and
Marlene Cable Family Fund
and Pat and Sue Quinn
Recreational Fund

Adopt a Bird

Charlotte Clark
Hannah Cowan
Emily Fletcher
Joy Krogstad
Rebecca Ostedt
Julia Strand
Logan Toftness
Joshua Waits

In-Kind Donations

Barka Trucking and Excavating
Kristen Brown
Norman Brunkow
Caring Transitions
Janice Charles
Chippewa Falls Gem and
Mineral Society
Brigette Douthitt
Eau Claire Energy Cooperative
Kathy Edwards
Fall Creek Fire Station
Fleet Farm - Store Support
Center
Bob Hicks
Jack's Canoe Rental
Cheryal and Stan Keisler
Jean Kleven
Kohl's

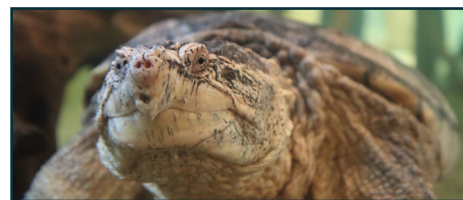
Beth Luck
Kristi Lund
James Murray
Deborah Nissen
Martha and Michael O'Halloran
Judy and Jim Schwarzmeier
Ken Stolp
The Stump Man
Elke Swanson
Tri-County Advisor
Cassandra and Timothy
Volbrecht

Event Sponsors

City of Eau Claire
Eau Claire Area Chamber of
Commerce
Eau Claire Energy Cooperative
Eco-Minded
Festival Foods
Mayo Clinic Health Systems
Paint Creek Nursery
Scheels of Eau Claire
Xcel Energy, Inc

The Turtle Fund

David T. Bodeau Family
Fund through the Eau Claire
Community Foundation
Paula Bonnin
Craig and Gail Carlson
Kathleen Carlyle
Nicole Coonen
Jonathan Dill
Jennifer Fadness
Melissa Fulkerson in honor of
Miles and Calan Wolosyn
Nancy Golden
Hello Adorn
Susan Leah
Cheryl Poppe
Jim Schumacher
Diane Schuknecht
Holly Slota in honor of Collin
Slota Gouran



(Continued on next page)

DONATIONS 2024

The Turtle Fund *(cont.)*

Suzie Slota in honor of Collin Slota Gouran

Memorials

In memory of Amanda Geissler

Connie and Martin Viken

In memory of Louis Frase

Kathleen Bartl
Bruce and Barbara Bayley
Pat Henke

In memory of Sawyer Johnson

Katie Wykoff

In memory of Peggy Jones

James and Julie Gallagher
Paul and JoDea Green
Craig Jones
Al Jones
McMahon, Schleifer, & Wood, LLC
Traiden and Alicen Oleson
Susan Steffes

In memory of Jerome Magalske

Kirsten Gierhart
Sandy Gobler

In memory of Douglas Radke

Jacqueline and Michael Dahl

In memory of Elaine Rundall

K. Gretchen Beckstrom
Lisa and Jeff Hays
Jerome and Kae Rundall
Sheila Smith
Ellen Terwilliger

In memory of Barb Stolp

Anonymous
Nathan Aaseng
Joseph and Kathryn Alf
Carol Anderson
Nancy Bezanson
Barb Cizek
Jacqueline and Michael Dahl
Patrick and Mary Delmore
Sharon Derusha
Martin and Maureen Fallon
Keith Hallum
Barbara Hillestad
Phillip Simon and Molly Gurney
Cheryal and Stan Keisler
Lavonne and Larry Krause
Charles McLeod
Robert and Julie McMillan
Thomas and Carol Miller
Daniel and Karen Mittag
Randy and Kathleen Nelson
Mark and Nola Schmitt

Marilyn Schoonover
Judy and Jim Schwarzmeier
Anne Sayers and Jason Sheridan
Gregory and Denise Stillman
Darla Sorensen
Ken Stolp
Carol and Joseph Tracy
Shelly and Travis Trepanier
Mary and Gary Rambo
Drew and Mary Ryberg
George Utphall
Debra Warner
Paige Weiland
Richard Ziemann

In Memory of Daniel Strassman

DeeAnne Peterson

Honorariums

In honor of David Eastwold and Family

Conrad Eastwold

In honor of Greg Hirsch's 50th Birthday

Bernice Hirsch



Prescribed burn at Henke Acres, May 2025



Nature Nooks after Day of Caring clean up, October 2024



Birdwatching during summer field trips, August 2025

GRANTS RECEIVED 2024

| | |
|------------------------------------------------------------------------------|-----------|
| Eau Claire Community Foundation, William A. Bingham Grant (Capital Projects) | \$45,000 |
| Eau Claire Community Foundation (Recreation Equipment Upgrades) | \$10,000 |
| Eau Claire Garden Club (Butterfly House) | \$200 |
| Lake Altoona, Clean Boats Clean Waters | \$4,959 |
| Lake Wissota, Clean Boats Clean Waters | \$4,859 |
| Lower Long Lake, Clean Boats Clean Waters | \$4,959 |
| Sand Lake Association, Clean Boats Clean Waters | \$4,738 |
| Chippewa Rod & Gun, Clean Boats Clean Waters | \$5,930 |
| Nordson Corporation Foundation (Field Trip Scholarships) | \$10,000 |
| Pablo Foundation (Feasibility Study) | \$150,000 |
| USDA, Henke Acres Research (MAPS) | \$3,152 |
| Wisconsin Society of Birds-Steenbock (Bluebird Restoration Project) | \$500 |
| Xcel Energy (Bat Conservation) | \$5,000 |
| Xcel Energy (MOTUS Tracking) | \$6,000 |
| AnnMarie Foundation (Motus Tracking & Community Outreach) | \$600 |
| Lake Monitoring & Protection Network | \$72,023 |
| Inland Bird Banding Association Paul Stewart Avian Research Fund | \$1,000 |

Total: \$328,920

COMMUNITY PARTNER SPOTLIGHT



This year's spotlight is Kohl's in Eau Claire! Kohl's is committed to making a positive impact in their local communities with a focus on family health and wellness, and has given more than \$875 million dollars towards this initiative all over the world.

Our local Kohl's has followed their corporation's mission and started volunteering with us in 2024. Since then, they've contributed to a wide range of projects that are essential to our programming. These projects include putting together butterfly feeders for our Butterfly House, assembling prizes to hand out to visitors after completing a scavenger hunt, putting together Monarch raising kits, and creating Christmas ornaments for our 'Care for our Animals' promotion. They have also helped prepare for our Candlelight Hikes, and take care of the behind-the-scenes tasks like folding trail maps, organizing papers, and folding clothes for our Nature Store. In 2024, 32 Kohl's employees came out to volunteer and donated 118 total hours of their time. In addition to their hands-on support, Kohl's provided a matching donation of \$4,083, which will go directly to our Annual Mission Fund.

Kohl's also selected us as their Shopping Spree Grant recipient back in 2024. With this grant, we received \$2,000 to shop in-store and purchase a variety of items. A few of our staff shopped around the store and brought back much needed supplies like vacuums, kitchen utensils, program materials, animal care supplies, and more!

Thank you to our local Kohl's for your continued support of Beaver Creek, our mission, and our community!



*Making butterfly feeders,
July 2024*



*Items received from shopping
spree, November 2024*

BEAVER CREEK NUMBERS

Donations by the Numbers *(Jan 1-Dec 31, 2024)*

Total # of In Kind Donations: **28**

Total # of Event Sponsors: **9**

Total # of Donors: **361**

Average Donation: **\$332.41**

Total Checkout Donations: **354 for a total of \$3,720** (\$3,444 in 2023)

Most Popular Donation Range & Numbers of Donors that gave that amount: **158 donors gave \$5**

Donations to the Annual Mission Fund: **\$66,677.17**

Donations to the Endowment Fund: **\$115,670.99***

**Includes two end of life gifts*

Donate to our
Annual Mission Fund!
Help us cover the costs
of smaller recurring,
unexpected, or much
needed updates!

Beaver Creek by the Numbers *(Jan 1-Dec 31, 2024)*

Total Memberships: **1,465**

Total New Memberships: **585**

Field trips: **83 & 45 Earth Talks** (80 field trips & 33 Earth Talks in 2023)

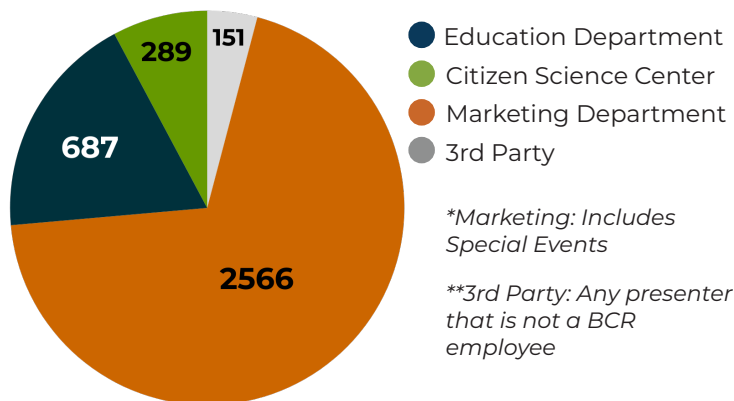
Total kids from field trips: **3,724** (3,090 students in 2023)

Entrance rates: **13,645** walk-ins to the Nature Center (13,549 in 2023)

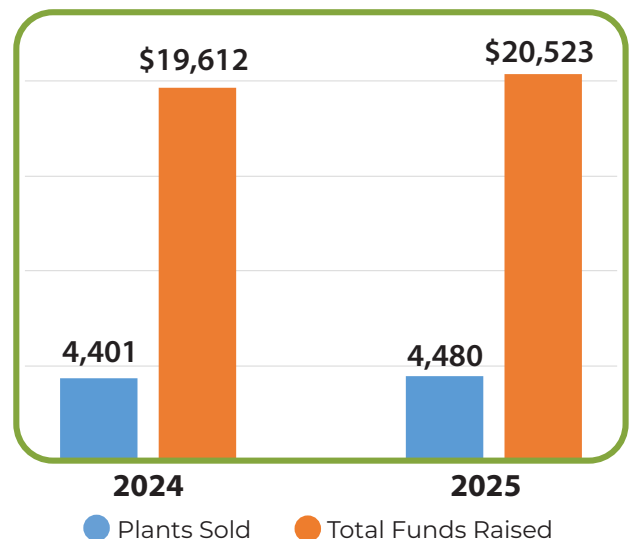
Month with most visitors: **August** with **3,682 visitors**

Total Facility Rentals: **46 day rentals totalling \$7,100**, and **37 overnight rentals totalling \$48,400**

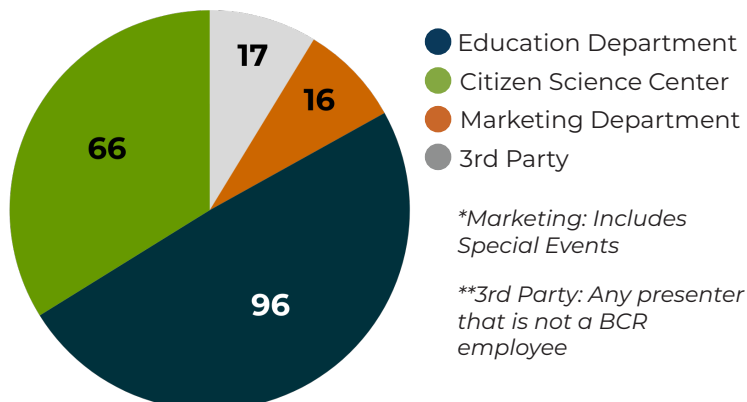
Number of People Served Through Programs per Department *(both virtual & in-person)*



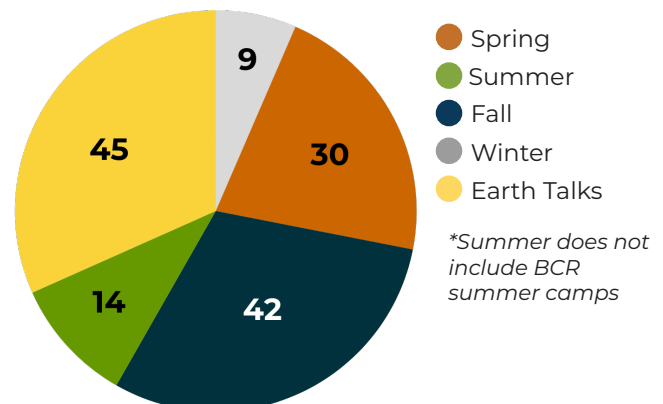
Native Plant Sale Numbers



Number of Programs Offered per Department *(both virtual & in-person)*



Number of Field Trips Offered per Season



What does your donation look like?

Because of your support, we can continue our mission of *Connecting People with Nature* by offering outdoor recreational opportunities and environmental education programs for people of all ages!



Adventure Programs



Butterfly House



Citizen Science Center



Field Trips & Summer Camps



Henke Acres



Trails & Gardens