



# Beaver Creek Reserve RECYCLER

*A partnership between Beaver Creek Reserve and Eau Claire County*

## EARTH DAY EVERY DAY

After four years of hosting our annual Earth Week Challenge, we've decided to reevaluate our sustainable initiatives to make more of a community-wide impact. Thank you to everyone who participated in our Challenge since 2019. This year, we decided to expand our Earth Week and jumpstart our *NEW* campaign, "Earth Day Every Day" by celebrating Earth Day the **entire month of April**! Teams no longer have to register and complete challenge tasks. Instead, all you have to do is attend these events! At the end of each Beaver Creek event, prizes will be raffled off to participants. Prizes may include a **\$50 gift card to Scheels**, **\$25 to Festival Foods**, **\$20 to Menomonie Market Food Co-Op**, **Earthbound composting services**, a **Triple Play Membership**... and more!

Register for these events and learn more on our website! See the next page for more details on specific activities.

APRIL 2023						
SUN	MON	TUES	WED	THURS	FRI	SAT
						1
2	3	4	5 *Sustainable Living for Beginners	6	7	8 Spring GPS Hike at Beaver Creek
9	10	11	12	13	14	15 Annual Midwest Crane Count Hobbs Observatory Public Viewing
16	17 EARTH WEEK • FREE Eau Claire County Parks • Earth Week Photo Contest	18 *Preparing for your Pollinators	19 *Sustainable Living for Eco-Champions	20 Bird School, Day 1 Earth Week Open House (at the Brewing Project) w/ JONAH & Eau Claire County Office of Recycling & Sustainability	21 Bird School, Day 2 *Changes in the Land	22 EARTH DAY! Bird School, Day 3 Earth Day Walk Eau Claire Amazing Cleanup
23 Natural Paints for Kids Intro to Herbalism w/ River Prairie Apothecary	24	25 *Who is that Singing?	26 Adult Wildflower/ Phenology Hike	27	28 Critters at the Creek Sponsored by Mayo Clinic Health System	29 Foraging for Wild Edibles
30				Beaver Creek Reserve Event (raffle prizes available)	Community Event	*Virtual Program

Thank you to our sponsors:



# NATIVE PLANT SALE



Online store opens **Wednesday, May 3** &  
closes **Wednesday, May 10**

## Order Pick-Up Dates

Friday, May 12 & Saturday, May 13  
9:00 am - 3:00 pm

Order pick-up at the Wise Nature Center, Beaver Creek Reserve

Visit our website for more information: <https://www.beavercreekreserve.org/events/native-plant-sale/>



# Earth Week Open House

Thursday, April 20  
5:30 - 7:30 PM

The Brewing Projekt

1807 N Oxford Ave, Eau Claire

Learn about your **eco-friendly resources** in  
the **Chippewa Valley** and how you can  
jumpstart sustainability in your life!



Vendors include the Eau Claire Garden Club, The Eau Claire Refillery, Earthbound Environmental Solutions, and MORE! (**30+ vendors total**)

# EARTH DAY WALK

Saturday, April 22 | 1:00-4:00 PM | Wise Nature Center

BCR Members: \$15 | Non-members: \$20



- Take a **self-guided hike** and learn about pollinators, native plants, and the Earth!
- Make a sustainable **seed starting kit** made with native plant seeds to take home
- Learn about composting & recycling
- Enjoy a "dirt" pudding cup & pink lemonade



(715) 877-2212  
[www.beavercreekreserve.org](http://www.beavercreekreserve.org)  
S1 County Rd K  
Fall Creek, WI 54742

**Register  
online!**

[www.beavercreekreserve.org/events/calendar/](http://www.beavercreekreserve.org/events/calendar/)

Register by **April 9** to guarantee  
yourself an Earth Day t-shirt once  
you've completed the walk!

# RECYCLING RECAP

✓ **CLEAN**  
✓ **DRY**  
✓ **UNBAGGED**

Lids on!

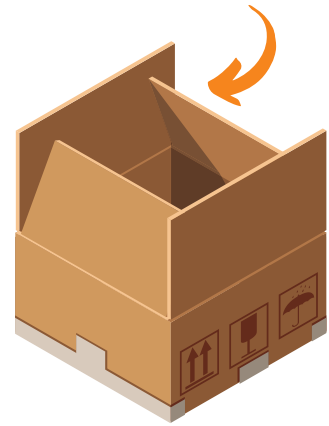


#1 & #2  
Bottles/  
Containers



Lids off!

Break it down!



Save this portion and put above your recycling container or on your fridge!

## Recycling Drop-sites

Drop sites are available for those who reside in the municipalities where the site is located.

**Bridge Creek** S9515 Hwy. 27,  
Augusta (North of Augusta)  
Saturdays, 9:00AM - 1:00PM

**Foster** S12785 Wren Rd, Osseo  
(Cty HH & Wren Rd. East of Foster)  
1st & 3rd Saturdays of month  
8:00AM - 12:00PM

**Pleasant Valley** S10405 Cty Rd. HHI,  
Eleva (Across from Town Hall)  
2nd & 4th Saturdays of month,  
8:00AM - 12:00PM

**Brunswick** W3020 Mitchell Rd., Eau  
Claire (East of Hwy 37 and Trinity  
Equestrian Center  
Saturdays, 9:00AM - 12:00PM

**Lincoln** S5555 Green Meadow Rd,  
Fall Creek (South of US Hwy 12)  
2nd & 4th Saturdays of month  
9:00AM - 1:00PM

**Seymour** 8011 Olson Drive, Eau Claire  
Tuesdays, 12:00PM - 4:00PM  
Saturdays, 8:00AM - 12:00PM

**Drammen** W6505 County Rd. ZZ,  
Located at Town Shop  
Saturdays, 9:00AM - 12:00PM

**Ludington** N956 Town Shop Rd., Fall  
Creek (Intersection of Cty D &  
Town Shop Rd.)  
1st & 3rd Saturdays of month  
8:00AM - 12:00PM

**Union** 1882 White Pine Dr., Eau Claire  
Wednesdays, 1:00PM - 5:00PM  
Saturdays, 9:00AM - 5:00PM

**Fairchild** 121 Emery Street, Fairchild  
Wednesdays, 8:00AM - 12:00PM  
Saturdays, 8:00AM - 12:00PM

**Wilson** E26936 Cty Rd. G, Stanley  
(intersection of Cty Rd. G & Cty Rd. MM)  
Saturdays, 8:00AM - 12:00PM

# ITEMS To TRASH

## Plastic Berry Containers

These can be labeled as #1 plastic, but their composition is different from other #1 plastics.



## Black Plastics of any Number

Sorting machines use light to detect plastics, since these are black, they do not reflect light.



## Freezer or Fridge Boxes with Food in Direct Contact

If the food in your freezer touches the box directly (such as corn dogs) throw the box in the trash. Dry good boxes are okay, this only applies to refrigerated and frozen items.

## Plastic Pouches

These are mixed material, and cannot be recycled. *\*The Eau Claire Refillery does accept these items for recycling along with razors\**



## Disposable Coffee Cups

The lid is usually a #6 plastic, and the cups are Styrofoam or plastic lined.



## Styrofoam (Plastic #6)

Styrofoam as a material is too light and messy to sort, making it very difficult to recycle.



## Paper-based Cartons

These are a mixed material made with paper, plastic, and sometimes aluminum to increase shelf-life.



## Single Serving Coffee Cups (K-cups)

Too small to recycle, they end up getting lost in the recycling process.



## Greasy Pizza Boxes

Tops of boxes may be recycled if they are not greasy. Grease is what contaminates the recyclable material.



## Shredded Paper

This should be discarded through compost, trash, or see if your bank has shredding events

## Straws and Plastic Utensils

These items are too small to recycle.

# ITEMS To SWAP



**Shampoo and Conditioner Bottles**

**Shampoo and Conditioner Bars**

**Liquid Dish Soap**

**Soap Bars**

**Ziploc Bags**

**Reusable Bags**

**Saran Wrap**

**Beeswax Wraps**

**Plastic Grocery Bags**

**Reusable Fabric Bags**

**Paper Towels and Napkins**

**Cloth and Linen Fabrics**

**Parchment Paper and Tinfoil**

**Silicone Baking Mat**

**Sponges**

**Compostable, Silicone, or Cloth Sponges**

**Plastic Water Bottle**

**Reusable Bottle, Mason Jars, Cups**

**Toilet Paper**

**Bamboo Paper**

**Baby Diapers**

**Reusable Nappies**

**Shower/Bathroom Cleaning Supplies**

**Homemade Recipes**

**Single use K-cups**

**Reusable K-cups**

*For more low waste options, consider purchasing products supplied by The Eau Claire Refillery, The Juggery, and Eco-Minded.*

**Contact info:**

- [Theeauclairerefillery@outlook.com](mailto:Theeauclairerefillery@outlook.com)
- [hello@thejuggery.com](mailto:hello@thejuggery.com)
- [info@shopeco-minded.com](mailto:info@shopeco-minded.com)





# What about everything else?



Save your plastic bags and recycle them at a Target, Wal-Mart or Festival Foods. Plastic bags are **NOT** recyclable through curbside pickup.

Use this website to find sites that recycle plastic film and to learn more about plastic film products: [BagandFilmRecycling.org](http://BagandFilmRecycling.org)

## Other plastic film products:

- Ziploc, cereal, and bread bags
- Bubble wrap
- Amazon plastic packaging
- Water bottle case overwrap



For clothing, refashion or fix used items before donating or selling. Businesses such as Hope Gospel, Goodwill, Plato's Closet, and Saver's will accept wearable items.

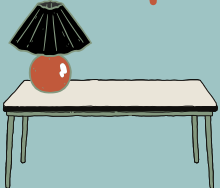


Mattresses are large and take up lots of space in the landfill. Recycle with a furniture store or call Kersten Family Junk Removal for curbside service (715)598-3677.



Large furniture, cookware, lamps, tables, cabinets, and cupboards can all be brought to donation sites to be reused:

- Chippewa Valley Habitat for Humanity Restore: 145 N Clairemont Ave, Eau Claire, WI 54703



To dispose of items curbside, call your hauler for a quote.

Check out

[www.eauclairecounty.gov/recycling](http://www.eauclairecounty.gov/recycling)  
to learn how to recycle other items.



Light bulbs can be recycled at our clean sweep event, First Choice, or Batteries Plus Bulbs for a fee.

## **FIRST CHOICE.**

**Eau Claire County residents can recycle electronics and batteries for FREE year-round at First Choice Computer Recycling:**

- All batteries (sort and tape terminals)
- Small appliances and fans
- Vacuums, microwaves
- Washers, dryers, furnaces, stoves
- Laptops, printers, scanners
- Televisions
- Computers and monitors
- Cell phones and telephones
- Cords and wires
- Keyboards, mice

**\*Fees apply to freon appliances and exercise equipment.**

For questions, please contact First Choice Computer Recycling:  
715.833.2005  
525 Park Ridge Ct. Eau Claire, WI 54703

# 2023 RECYCLING/IMPORTANT DATES

## Clean Sweep Event Dates:

- **May 13th** WRR Environmental Services
- **July 22nd** 5200 Ryder Road, Eau Claire
- **September 16th** 8AM-12PM

### No Fee

- Oil based paints
- Thinners/Strippers
- Stains/Varnish
- Solvents
- Cleaners/Polishes
- Old Fuel
- Used oil and filters
- Antifreeze
- Aerosol Cans

Chemicals must be in the original container with the product label.

Please stay in your vehicle to reduce wait times. Staff will unload your vehicle.

Can't make it to the event? Schedule an appointment with WRR Environmental to dispose of your hazardous waste properly. Fees apply.

### Accepted for a Fee

- Latex Paint
- Light bulbs
- 20lb Propane Cylinders

## Yard Waste Pick-up

May 1st-5th

November 6th-10th

\*Limit 10 paper bags\*

## Bulk Item Pick-up

April 17th-21st

October 2nd-6th

\*Limit 1 item\*

Contact your hauler with any questions including address eligibility and hauler participation.

The Eau Claire County Sustainability Advisory Committee is inviting you to participate in a public forum.

**April 6, 6:30 PM** at Augusta High School Cafeteria, E19320 Bartig Road, Augusta, WI 54722

OR

**April 19, 6:30PM** at Town of Washington town hall, 5750 Town Hall Road, Eau Claire, WI 54701

Come learn where the community is currently meeting its climate action goals, then have the opportunity to tell the committee what **YOU** think should be included in the community Climate Action & Resilience Plan.

**Learn more at**

**[www.eauclairecounty.gov/sustainability](http://www.eauclairecounty.gov/sustainability)**

## National Prescription Drug Take-Back Day

**Saturday, April 22, 2023**

**10am-2pm**

- Altoona Emergency Services (1904 Spooner Avenue)
- Fall Creek Village Hall (122 E. Lincoln Avenue)
- Marshfield Medical Center-Eau Claire (curbside service 2116 Craig Rd, Medical Offices, Entrance B)

**Holding onto old, unused prescription medications increases the chance of other people finding and using them. Younger children or pets may find them and accidentally swallow the medication. Incorrectly disposing of medications in the garbage or drains can lead to contamination of the environment, further degrade ecosystems, and pollute our waterways with dangerous chemicals that cannot be treated.**

For more information on the locations of the National Prescription Drug Take-Back Day, and a full list of medication drop-off locations in Eau Claire County, visit [www.GetInvolvedASAP.org](http://www.GetInvolvedASAP.org)



# FOOD WASTE AND COMPOSTING

## THE FACTS

- Approximately 30% of waste in Wisconsin landfills is organic matter.
- When organic matter breaks down in landfills it emits greenhouse gases, contributing to climate change.



## WHAT IS THE BENEFIT OF COMPOSTING?

- Composting is a natural way to recycle food and other biodegradable waste into enriched, fertile soil.
- Products of composting can be used in gardens, lawns, agricultural use, and as mulch.
- Reduces methane, the need for chemical fertilizers, and carbon dioxide.
- Improves soil quality to restore forests, wetlands, and habitats.



## WHAT IS COMPOSTABLE?

- Coffee grounds and filters
- Soiled cardboard cartons
- Food scraps
- Meat/seafood (in small amounts)
- Yard scraps
- Vacuum cleaner contents
- Fur
- Dryer lint
- Nut shells
- Paper towels and napkins

## HOW CAN I COMPOST IN EAU CLAIRE COUNTY?

1. Purchase a Home Composter during the county's compost bin sale.
2. Enroll in curbside composting services through Earthbound Environmental.
3. Build a compost bin at home!

If you are interested in starting a backyard compost check out this useful website:

<http://www.howtocompost.org/>

## HOW DO I WASTE LESS FOOD?



- Take inventory of your pantry and fridge before leaving to pick up groceries.
- Meal prep appropriate servings for yourself and others you are feeding for the week.
- Keep leftovers in airtight containers to ensure freshness.
- Preserve produce with correct storage strategies.
- Be wary of buying items with short shelf life in bulk.
- Use vegetable and chicken scraps to make your own vegetable and chicken broth.

## RESOURCES

- Check out UW-Extension for their Master Composter resources.
- Check our website [www.eauclairecounty.gov/recycling](http://www.eauclairecounty.gov/recycling) to learn more about our next compost bin sale!
- **Earthbound contact:**  
<https://www.earthboundenviro.com/>



# SUSTAINABLE LAWNS

## What is No Mow May?

No Mow May is a voluntary effort to designate a portion or all of the lawn as a pollinator habitat by not mowing or applying chemicals during May.

This will allow common flowering plants to provide food for pollinators when many other flowers are not yet blooming. This is especially important in urban landscapes that do not border open land. At least one 2020 study has shown that unmown yards in the city have a fivefold increase in the number of native bees present.



## How do I Participate?

Leave your lawn untouched, and fully natural throughout the month of May! This means no mowing, fertilizing, or weeding for a whole month and spread the word!

## Can I do more?

Of course! Planting native wildflowers such as Bloodroot, Violets, and Jacob's Ladder will greatly help support our pollinators by giving them energy and habitats to rest in. Keeping a garden will also keep the busy bees occupied come Summer. Is grass having a hard time growing in your lawn? Consider growing clover in your lawn. Clover fixes nitrogen into the soil, has small flowers that attract pollinators, and require less water to keep green.

## What are the Rules?

No Mow May in Eau Claire has been supported by the City Council. Lawn heights will be relaxed in the month of May for residents participating in No Mow May.

This means the lawn height enforcement will be delayed until June 1st. \*

**\* Not in the City of Eau Claire?**

**Check with your municipality for specific rules \***

## Community Garden Information

Interested in growing a garden but don't have the space? Want to share your gardening wisdom and learn new techniques? Consider participating in a community garden! Right now there are 5 community gardens throughout the City of Eau Claire.

**Check out the community garden website:**

**[eauclairecommunitygardens.com](http://eauclairecommunitygardens.com)**

## Native, Local Plant Sales

### Land Conservation Division Tree and Shrub Sale

When: November 1st - January 31st

Contact: [holly.weigand@eauclairecounty.gov](mailto:holly.weigand@eauclairecounty.gov)

Information: Land Conservation Division website

### Master Gardener Plant Sale

When: May 21st 9am-1pm

Where: LE Phillips Senior Center

Contact: [Andy.Heren@eauclairecounty.gov](mailto:Andy.Heren@eauclairecounty.gov)

Information: [eauclaireareamastergardener.org](http://eauclaireareamastergardener.org)

## Master Gardener Events and Contacts

If you want to learn how to garden or get involved with a community of masters in the trade, consider joining the Eau Claire Area Master Gardener Volunteers! These volunteers go out into the community and educate the public on gardening techniques as well as maintain community gardens and give garden tours.

**For more information contact the UW-Extension**

**Office at 715-839-4712 or go to**

**<https://mastergardener.extension.wisc.edu>**





# SUSTAINABLE HOMES

## How to save energy in the Summer

## How to save energy in the Winter

- Keep the thermostat close to the outdoor temperature, 78 degrees is the recommended temperature.
- Turn up the temperature when you leave your home and lower it when you are in your home.
- Turn off fans when you are not in the room.
- Schedule regular maintenance on cooling equipment.
- Add caulk or weatherstripping to leaky windows or cracks.
- Set your water heater to no more than 120 degrees.
- Limit the amount of direct sunlight into your home.

- Keep the thermostat at 62- 68 degrees for optimal heating.
- When not at the house, set the temperature at 55 degrees to keep pipes from freezing.
- Do a home energy assessment.
- Open curtains and blinds on south facing windows to naturally heat your home with the sun.
- Install heavy drapes over leaky windows.
- Schedule regular maintenance on heating equipment.
- Use LED holiday lights.

## Renewable Energy

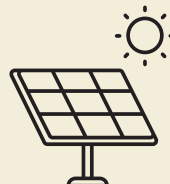
### Want to see what solar can do for you?

Utilize the Solar Estimate calculator to see just how much you can save:

Solar Estimator: <https://www.solar-estimate.org/>  
Be sure to check with your utility provider to hear about programs and other ways to save!



Install LED lights into your home



## Federal Home Improvement Funding

The Inflation Reduction Act (IRA) signed into action in 2022 subsidizes households investing in the transition to clean energy. From washing machines, heat pumps, solar panels, and even EVs, this act can help save potentially thousands of dollars' worth of investments to switch to electric power. Not only this, but since electric power is cheaper, Eau Claire County residents can save on average \$340 per year on their energy bills. For more information check out these articles:

- <https://www.whitehouse.gov/cleanenergy/>
- <https://www.rewiringamerica.org/>

	# of Furnaces	Avg. savings if electrified	# of Water Heaters	Avg. savings if electrified
Electric Resistance	8,553	\$378 / yr	12,482	\$317 / yr
Fuel Oil	1,461	\$542 / yr	40	\$309 / yr
Propane	4,340	\$637 / yr	1,744	\$305 / yr
Natural Gas	23,343	\$50 / yr	26,460	\$55 / yr

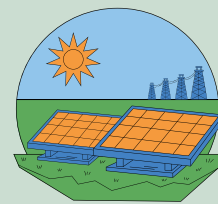
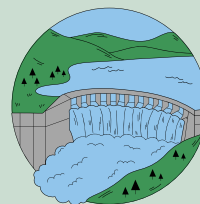
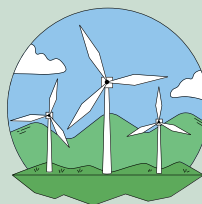
## Other Options

Oftentimes utility providers will offer incentive programs to make your home more efficient. Organizations such as Focus on Energy offers free efficiency kits, along with contractor search options, rebates, and energy assessments on your home and appliances on top of these programs.



**focus on energy**<sup>™</sup>

Partnering with Wisconsin utilities





SI County Road K | Fall Creek, WI 54742  
beavercreekreserve.org  
**CONNECTING PEOPLE WITH NATURE**

**Non-Profit Org**  
**US Postage**  
**PAID**  
**Permit No. 1557**  
**Eau Claire, WI 54701**

# Beaver Creek Reserve Recycler

## What's Inside

- **Beaver Creek Reserve Earth Day Every Day**
- **Recycling Recap**
- **2023 Important Dates**
- **Food Waste and Composting**
- **Sustainable Lawns**
- **Sustainable Homes**

Cov ntawv txhais lub Hmoob thiab cov  
ntawv koj muab luam tawm tau nyob rau  
[www.eauclairecounty.gov/recycling](http://www.eauclairecounty.gov/recycling).

Puede encontrar traducciones al español  
para descargar o dónde obtener una  
versión para imprimir aquí  
[www.eauclairecounty.gov/recycling](http://www.eauclairecounty.gov/recycling).



**Recycling Coordinator**  
(715) 839-2756  
[recycling@eauclairecounty.gov](mailto:recycling@eauclairecounty.gov)



Follow our Facebook page for important information and upcoming dates!

[www.facebook.com/EauClaireCountyRecycling](https://www.facebook.com/EauClaireCountyRecycling)