

# WOOD prints

published quarterly by Beaver Creek Reserve

volume 34 | number 2 | SPRING 2017



Encouraging News for Bats.....	2
2017 Photo Contest .....	3
Spring Programs.....	4
Nature News for Kids.....	6
Naturalist Notes .....	10
Volunteer Opportunities .....	12
Club News.....	13

#### NATURE CENTER HOURS

Monday–Saturday  
9 a.m. – 4 p.m.

Sunday  
Noon – 4 p.m.

#### CONTACT

Phone & Fax  
715-877-2212

Email  
[bcr@beavercreekreserve.org](mailto:bcr@beavercreekreserve.org)

Website  
[www.beavercreekreserve.org](http://www.beavercreekreserve.org)

## BCR BIRD BANDING CELEBRATES 20 YEARS

Thanks in large part to Augie Wirkus, one of the founding members and the original banding permit holder, bird banding is in its twentieth year at Beaver Creek Reserve! The official anniversary was January 5.

The bird banding program at Beaver Creek Reserve is completely volunteer-driven and funded. A rotating group of more than 20 volunteers help with a variety of bird banding projects such as Monitoring Avian Productivity and Survivorship (MAPS), American Kestrel nest box monitoring, winter feeder bird banding, and Northern Saw-whet Owl banding.

Banding is very simple concept but requires trained skills and special equipment. Nets are designed to catch the birds so that they are not hurt. Volunteers gently extract the bird from the net and look for an existing band. If the bird is not banded, a thin metal band is attached to the bird's leg. The band has an identifying serial number that scientists can use to track and study various bird species. A bird ranging from a petite goldfinch to a mighty eagle can

be banded. Some birds caught in the banding process can be new or old friends visiting Beaver Creek Reserve season after season. How do we know this? A bird's band number is entered into the U.S. Geological Survey's website along with the bird's estimated age, sex, and other information.

From this data scientists can discover the bird's minimum age, migration pattern, growth, and reproduction.

Augie Wirkus, a bird bander of 50 years, explained, "When [someone] looks out into their lilac bush and sees a robin at its nest with a band on its leg, this most likely indicates it is the same bird that nested here

before, and has returned to nest again." Bird banding is also extremely useful in climate change research. Scientists have noticed the relocation of bird migrations and changes in behaviors from many bird species. Without the use of bird banding, this information would be difficult to obtain.



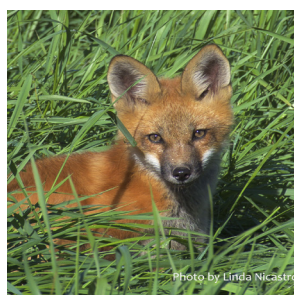
Bird Banding by Heidi Tubbs,

*Continued on Page 2*



Update on WI Bats Pg. 2  
Possible Vaccine for WNS

CONNECTING  
PEOPLE  
WITH NATURE



2017 Photo ContestPg 3  
*What a Face* by Linda Nicastro



Brand New Kids Page Pg 6  
Meet Bart the Beaver



Naturalist Notes Pg 10  
"The Rodent That Shaped America"



# Encouraging News for Bats Stems from Wisconsin Research

Thanks to research being done right here in Wisconsin, a vaccine for White-Nose Syndrome (WNS) is being tested. According to the WI Bat Program, since WNS was first detected in 2014, there has been a significant decline in the bat population, with specific sites seeing more than a 90% decrease in populations.

The vaccine is currently being tested on a group of bats who were vaccinated, and then allowed to hibernate in a cave known to be contaminated with the fungus that causes WNS. If the bats survive the winter hibernation, the vaccine will go in to full production.

Hurdles will still remain in widespread administration of the vaccine. As it is not feasible to catch

each individual animal, methods for an oral delivery of the vaccine are being designed.

For more information, you can read the full article by Tonie Rocke, USGS National Wildlife Health Center, Madison at <http://www.wiatri.net/Inventory/Bats/News/2017JanEcholocator.pdf>

## Bird Banding

*Continued from cover*

While collecting data is important, the health and safety of the birds is the utmost priority. Bird banders emphasize the humane procedure bird banding uses. Out of tens of thousands of birds banded, less than 0.0008% of the birds are injured or suffer from extreme distress, indicating how safe bird banding is.

Furthermore, bird banding is key for establishing hunting regulations. When game birds are banded and recorded, scientists can uncover population dynamics of a given species such as survival rate, migration, and breeding. Experts can also evaluate the harvest and recovery rates of birds after the hunting season, which is a factor in setting hunting regulations. According to the USGS, information returned from banded birds, is the primary source for

estimating vital rates of birds, and monitoring and managing endangered species. Public informa-

tion about bird banding can be found at [USGS.gov](http://USGS.gov).

Here at Beaver Creek Reserve, volunteers band feeder birds, including woodpeckers, goldfinches, nuthatches, chickadees, and many more. However, some birds require additional permits to band such as eagles and hummingbirds, which are not banded at BCR. According to Jeanette Kelly Citizen Science Director, "To date, the oldest Red-breasted Nuthatch in the U.S. was originally banded at Beaver Creek Reserve." That particular

nuthatch was originally banded in 2006 and then again in 2012. At six and half years old, it was recognized by the Bird Banding Laboratory as the oldest red-breasted nuthatch. Kelly further added, "A Downy Woodpecker was caught at the Nature Center 48 times over a period of five years." Outcomes of bird banding are not only informative, but can reveal interesting facts about the birds that call

Beaver Creek Reserve home, year after year.

Thanks to Augie Wirkus and all the bird banders for the last 20 years. Here's to another 20 years of banding!

Interested in getting involved in the bird banding Program? There are

several upcoming opportunities. First, the bird banders will be giving a demonstration at French Toast Breakfast on March 11th. Saturday, May 6, is the Spring Bird Hike and Banding demo.

For more information please contact Jeanette Kelly at the Citizen Science Center, or [csc@beavercreekreserve.org](mailto:csc@beavercreekreserve.org). The bird banders are always in need of bird seed and suet for the feeders and funds to help purchase other necessary supplies.

*Written by Intern Emily Kinzel and Jeanette Kelly, CSC Director*



Thursday morning volunteer bird banders repair nets. From left to right: Judy Schwarzmeier, Gary Wauters and Lynn Janik.



The most commonly banded bird at BCR is the American goldfinch. As of March 2016 more than 16,000 were banded.





Above: *Sweet Nectar* by Kristi Schumacher, 2017 Calendar Cover.

## NEW Extended Deadline!

Entry dates: March 1 - June 30

### Returning Category: Birds

We are dividing birds in to their own category again in 2017



*Spring Beauty* by Ryan Zimmerman

### FREE Entries for first time contest participants

In order to get more kids and amateur photographers involved, we are offering a total of two free entries for new photographers for the adult, youth and phone/tablet categories.

Rules and entry forms can be picked up from Beaver Creek Reserve and Sharp Photo and Portait, or downloaded from our website:  
[www.beavercreekreserve.org/events](http://www.beavercreekreserve.org/events)

## Chippewa Valley Roller Girl Bout Benefits BCR Bird Banding



BCR Marketing & Development Coordinator, Brianne Markin was on-hand to receive the \$250 donation from the CV Roller Girls.

On January 14, the Chippewa Valley Roller Girls took on the St. Paul Debu-Taunts at the Indoor Sports Center in Eau Claire with proceeds benefiting BCR! The CV Roller Girls, a nonprofit organization themselves, donate proceeds from their bouts to other local nonprofits. Two hundred and fifty dollars was donated to Beaver Creek Reserve. The CV Roller girls were given several choices of where the funds could be directed, and they selected the BCR Bird Banding Program!

### FRIENDS BOARD OF DIRECTORS

Kathy Clark..... President  
 Becca Bestul..... Vice President  
 Warren Gallagher..... Secretary  
 Dustin Hurtgen..... Treasurer

### MEMBERS

Bob Schmidt, Heather Deluka, Kathy Forsythe, Karen Hauck, Mark Wise, Joe Sanfelippo, Troy Anderson, Jonathan Leuthe, Robert Prock, Bruce Willet, Blake Tollefson

### RESERVE STAFF

Director..... Erik Keisler  
 Marketing Coordinator..... Brianne Markin  
 Citizen Science Director..... Jeanette Kelly  
 Citizen Science Technician..... Emily Lind  
 Naturalists..... Ruth Forsgren,  
 ..... Jim Schwiebert  
 Bookkeeper..... Connie Viken  
 Office Manager..... Rebecca Thacker  
 Office Associate..... Kirsten Holmes  
 Volunteer Coordinator..... A.J. Leiden,  
 Wisconsin AmeriCorps Member  
 Staff Astronomer..... Bert Moritz  
 Database Coordinator..... Julie Felske  
 Caretaker..... Jerad Polden  
 Maintenance..... Jerry Polden

### NEWSLETTER

Editor..... Brianne Markin

*Woodprints* is published quarterly by the Friends of Beaver Creek Reserve.

## Beaver Creek Connection

Looking for more stories and information on what is happening at Beaver Creek Reserve, or in the field of conservation and natural resources?

Visit our blog, and subscribe!  
<http://beavercreekconnection.blogspot.com/>

# UPCOMING

## *programs*



### **Bee Keeping 101 – Learn the Art of Beekeeping for Hobbyists**

**Saturday, March 4<sup>th</sup>, 8:00 a.m. -3:30 p.m.**  
**Wise Nature Center**

If you have heard about the pollinator shortage and want to make a difference, then become a backyard beekeeper. This informative class teaches you the basics to get started: introductory knowledge about beekeeping and bees, costs associated with beekeeping, time involved and equipment needed. Learn beekeeping from members of the Chippewa-Eau Claire Beekeepers club. Please bring a sack lunch and notebook. If desired, lunch can be catered from Chicken Chasers in Fall Creek for \$8.00; please indicate if you wish to order lunch and bring cash the day of the

program.

*Registration and full payment required by Mar. 1.*

**Friends \$40 Nonmembers \$45**

### **Adopt-A- Maple-Tree**

**Saturday, March 4, Two Sessions:  
9:30-11:30 a.m. and 1:00-3:00 p.m.**

**Wise Nature Center**

The maple syrup season is short but sweet. We will start with a short program to learn the basics of making maple syrup and how to identify a maple tree. Each family or group\* will decorate a tree marker with their own unique design to leave on their tree after tapping. The markers are designed to help families find their tree again as we strongly encourage participants to come back during

the sap run and see how their tree is doing. Participants will also get a chance to visit the sugar shack where the syrup is made. After the season is complete, families and groups will be able to stop back at the Reserve and pick-up their own 8 oz. bottle of syrup made with sap from their tree and their photo of their tapping adventure. The morning session open to youth organizations and families and the afternoon session is open to families only.

*\* Pricing is per group, we define a group as 6 or less people. If your group has more than 6 people, you will need to register for two spots.*

*Registration and full payment required by March 1.*

**Friends \$25 Nonmembers \$35**

## **Register Today**

#### **Online:**

[www.beavercreekreserve.org](http://www.beavercreekreserve.org)

**By Phone:** 715-877-2212

**In Person** at the Wise Nature Center. See cover for hours.

**By Mail:** Please call to reserve a spot, and checks must be received by the registration deadline.

We accept cash, check, Visa, Mastercard and Discover

Cancellations less than 48 hours in advance will incur a 10% administrative fee.

Cancelled programs are eligible for a full refund.

### **MARCH**

#### **Bee Keeping 101 – Learn the Art of Beekeeping for Hobbyists**

Saturday, March 4<sup>th</sup>, 8:00 am-3:30 pm

#### **Adopt-A- Maple-Tree**

Saturday, March 4, Two Sessions:  
9:30-11:30 a.m. and 1:00-3:00 p.m.

#### **French Toast Breakfast**

Saturday, March 11, 8:00 a.m.-12:30 p.m.

#### **BCR Book Club**

Mondays, March 20 –April 10, 5:00-6:30 p.m.

#### **Storybook Hiking Trail**

Friday, March 17, 10:00-11:00 a.m.

#### **Owl Prowl**

Tuesday, March 21, 7:00-9:30 p.m.



#### **Basket Weaving: Copper Pot**

Thursday, March 23, 3:00-7:00 p.m. and  
5:00-9:00 p.m.

#### **Nature Break for Kids**

#### **Spring Bird Count for Kids (Age 4-12)**

Friday, March 24, 9:00-1:30 a.m.

#### **Nature Break for Kids (Ages 8-12)**

#### **Maple Magic**

Friday, March 24, 12:30-2:00 p.m.

#### **Nature Break for Kids**

#### **Spring Fling (4-7)**

Friday, March 24, 12:30-2:00 p.m.

### **APRIL**

#### **Book Discussion with Author**

#### **Nickolas Butler**

Monday April 17, 6:30-7:30 p.m.

#### **Phenology Hike for Elder Explorers**

Thursday, April 20, 9:30-11:00 a.m.



## French Toast Breakfast

**Saturday, March 11, 8:00 a.m. - 12:30 p.m.**  
**Main Lodge**

French Toast Breakfast is Beaver Creek Reserve's longest running event! Enjoy delicious French Toast and fun activities for all ages across our entire campus. We'll have kid's crafts and activities, while members of the Chippewa Valley Astronomical Society will have an open house at Hobbs Observatory. The annual Chippewa Valley Water Color Exhibit will be held in the Nature Center and a special bird banding by the Beaver Creek Bird Banders will be held at the CSC.

*\*Please note the ticket price increase since the last Woodprints. Due to the increasing costs of supplies, we have increased ticket prices by \$1.*

### Advanced Tickets:

**Adults \$7, Kids (2-12) \$4**

### At the door:

**Adults \$8, Kids (2-15) \$5**

## Book Club

**Mondays , March 20- April 10,  
5:00-6:30 p.m.**

**Citizen Science Center**

Join Beaver Creek Reserve's Book Club! Over the course of 4 weeks we will be reading The Hearts of Men by local author Nikolas Butler. Then on April 17, Beaver Creek will be

hosting Nickolas Butler for a book discussion! The Hearts of Men is "an epic novel of intertwining friendships and families set in the north woods of Wisconsin at Camp Chippewa, a beloved Boy Scout summer camp." This book will become available for purchase March 7, but you can pre order copies on Amazon. The first meeting will be at the Citizen Science Center with subsequent meeting locations determined by book club members. Read the first 5 chapters prior to the first meeting.

*Registration required by March 16.*

**Free and open to Beaver Creek members only**

## Storybook Hiking Trail

**Friday, March 17, 10:00 -11:00 a.m.**  
**Wise Nature Center**

Join us for a fun spring activity followed by a guided tour on the Storybook Hiking Trail. This program is for kids ages 3-8 and their families. Explore spring-themed songs, interactive stories, and movement activities that encourage your children to think about the



ever-changing world around them and their role in it. All abilities are welcome to participate and we will do our best to accommodate your child's needs. Dress for the weather as majority of the program will be held outdoors. In case of extreme weather, the program will be held indoors.

*Registration and full payment required by March 16.*

**Friends Adult Free, Child \$3**

**Nonmembers Adult Free, Child \$5**

## Owl Prowl

**Tuesday, March 21, 7:00-9:30 p.m.**  
**Wise Nature Center**

Join a staff naturalist for a hootin' good time. The evening will begin with a short walk outside to listen and hoot for owls, after which we will return inside to discover some of the unique traits of the owl family. A guest appearance by BCR's non-releasable owl is expected toward the end of the program. This program is appropriate for upper elementary school-age children to adults. Please dress appropriately for the weather.

*Registration and full payment required by March 20.*

**Friends Adult \$5, Child \$3**

**Nonmembers Adult \$8, Child \$5**

*Continued on page 8*

### Frog Fest

**Wednesday, April 26, 7:00-10:00 p.m.**

### Acoustic Bat Monitoring

**Wednesday April 26, 7:30-9:15 p.m.**

## MAY

### Spring Evening Bird Hike

**Tuesday, May 2, 5:30-7:30 p.m.**

### Spring Wildflower Walk

**Thursday, May 4, 5:00-6:30 p.m.**

### Bee Keeping 102 – You Are a Beekeeper, Now What?

**Saturday, May 6, 8:00 a.m.-3:30 p.m.**

### Spring Bird Hike and Banding Demo

**Saturday, May 6, 6:30-11:00 a.m.**

### Make a Thunder Gourd

**Saturday, May 6, 9:30 a.m.-12:00 p.m.**

### Use Your Smartphone to Map and Report Invasive Species

**Thursday, May 11, 5:00-8:00 p.m.**

### Native Plant Sale

**Saturday, May 13, 8:30 a.m.-1:00 p.m.**

### Spring Evening Bird Hike

**Tuesday, May 16, 5:30-7:30 p.m.**

### Phenology Hike for Elder Explorers

**Thursday, May 17, 9:30-11:00 a.m.**

### Tiffany Train Ride

**Saturday, May 20, 7:00 a.m.-12:00 p.m.**

### Keeping Kids Entertained on the Trail

**Saturday, May 20, Two Sessions:  
10:00-11:30 a.m. and 1:00-2:30 p.m.**

### Mussel Mania!

**Tuesday, May 23, 6:30-8:00 p.m.**

### Herbal First Aid Walk for Families

**Wednesday, May 24, 6:30-7:30 p.m.**

## SAVE THE DATES

### Breeding Bird Atlas Blitz

**Tuesday, June 6, 8:00 a.m.-12:00 p.m.**

### Move Your Hips! Hula Hooping for Exercise and Empowerment

**Wednesday, June 7, 6:00-7:00 p.m.**

### Phenology Hike for Elder Explorers

**Thursday, June 8, 9:30-11:00 a.m.**

### Beekeeping 103 – Preparing the Hive for Winter

**August 5, 8:30 a.m.-3:30 p.m.**



# NATURE

## news

# FOR kids



S  
P  
R  
I  
N  
G



Hello!

My name is Bartholomew Castor Rodentsen, but you can call me Bart. I live at Beaver Creek Reserve. My job is to tell people about all the cool things that happen here.

Watch for me in the nature center, on our website, and on social media.

What does a frog say when it washes windows?  
Rub-it, Rub-it, Rub it!

### Did you know?

Wisconsin is home to 11 species (kinds) of frogs and one species of toad? Five of the frog species are tree frogs and six are known as true frogs. The only toad in Wisconsin is the American Toad.

Want to learn more about Frogs?  
Come to Frog Fest on  
April 26th at  
7:00 p.m.!





Barred Owl

Spring is an exciting time at Beaver Creek Reserve. Look for the **bold** spring words in the word search puzzle.

- **Skunk** cabbage is our first **flower** of spring.
- Hike the trails when **spring** beauty is blooming.
- **Barred** and **horned** owls can be heard hooting in early spring evenings.
- American **woodcock**, a small shorebird, does its mating dance in our savannah area.
- When wood **frogs** sing, it sounds like someone saying "lick-it-up" very fast.
- **Maple** trees are tapped below the nature center.
- **Ruby**-throated hummingbirds will be visiting the feeders in early May.
- Join one of the bird hikes to find returning **warblers**.
- Spring **peepers** are a tiny frog with an X on their back.



W	A	R	B	L	E	R	S	R	A
Y	S	S	R	E	P	E	E	P	R
G	H	I	K	E	M	A	P	L	E
O	N	K	C	O	C	D	O	O	W
F	M	I	H	O	R	N	E	D	O
R	A	P	R	U	B	Y	A	F	L
O	Y	F	V	P	G	Q	S	R	F
G	S	L	W	O	S	K	U	N	K
S	J	B	A	R	R	E	D	D	S



What do you call an owl with a sore throat?

A bird that doesn't give a hoot!

**Fast Fact:**

There are 19 species (kinds) of owls in North America. 12 species have been found in Wisconsin.

**Basket Weaving – Copper Pot**  
**Thursday, March 23, Two Sessions:**  
**3:00-7:00 p.m. and 5:00-9:00 p.m.**  
**Wise Nature Center**

Shirley Mount of the Basket Patch will be teaching a special basket weaving class perfect for beginners to intermediate weavers. The Copper Pot will begin with a copper painted wood base and weave a continuous weave to the center where you will place real copper overlay onto a 1/2" flat reed weaver with copper overlay on the rim as well. The handle is copper finish with a wood grip. This basket is very fun to weave! Some weaving experience helpful. Supplies to bring to class: Bucket, towel, clip clothes pins, pencil, tape measure, scissors, flat screw driver.

*Registration and full payment required by Monday, March 13.*

**Friends \$5 + \$28 for basket**  
**Nonmembers \$8 + \$28 for Basket**

**Nature Break for Kids**  
**Spring Bird Count for Kids (Ages 4-12)**  
**Friday, March 24, 9:00-11:30 a.m.**  
**Wise Nature Center**

Gather your fledglings to celebrate birds and introduce your young ones to taking an active role in citizen science. We will start the morning out by learning about birds and binoculars. Then older kids 8 – 12 will head outside to go birding with bird mentors. They will record bird species and tabulate results. Kids ages 4-7 (must be accompanied by an adult) will participate in bird activities, a craft and conduct their own survey at the bird feeders. Please bring your own binoculars if you have them.

Afternoon activities available for both age groups. Choose one program or both. If staying all day, please pack a *nut-free* lunch. Children age 4-7 must be accompanied by an adult. Children 8-12 an adult chaperone is optional.

*Registration and full payment required by March 20.*

**Nature Break for Kids**  
**Maple Magic (Ages 8-12)**  
**Friday, March 24, 12:30-2:00 p.m.**  
**Wise Nature Center**

Kids ages 8-12 are invited to join us after lunch as we explore the basics of maple syruping. We will: learn a smidgen of sugaring

history, discover a little bit about how the tree works and how we get sap, figure out how to identify a maple tree, and then take our new-found knowledge on a quest to find and tap a maple tree along Beaver Creek's trails. If the season has begun we can also see the sap to syrup process.

*Registration and full payment required by March 20.*

**Nature Break for Kids**  
**Spring Fling (Age 4-7)**  
**Friday, March 24, 12:30-2:00 p.m.**

For those who'd like to stay at BCR after the morning birding program we will have a fun afternoon of crafts, stories and free play at BCR!

*Registration and full payment required by March 20.*

**Nature Break For Kids Pricing:**

**Spring Bird Count (4-7)**  
**\$6 Members, \$8 Nonmembers**

**Spring Bird Count (8-12)**  
**\$6 Members, \$8 Nonmembers**

**Maple Magic Only (Ages 8-12)**  
**\$6 Members, \$ 8 Nonmembers**

**All Day Nature Break for ages 8-12**  
**Spring Bird Count + Maple Magic**  
**9:00 a.m. - 2:00 p.m.**  
**\$10 Members \$ 14 Nonmembers**

**Spring Fling**  
**Members: FREE, Nonmembers \$3**



**Stained-Glass Garden Chimes**

**Thursday, March 30, 2:00-4:00 p.m.**  
**Wise Nature Center**

Participants will have their choice of creating a wind chime from either a depression era plate or a piece of driftwood as a base. Then pieces of stained glass and glass beads are added to create a unique piece of art. This project is one that you will want to keep for yourself or give as a special gift.

*Registration and full payment required by March 24.*

**\$20 Members \$25 Nonmembers**

**Book Discussion with**  
**Author Nickolas Butler**  
**Monday, April 17, 6:30-7:30 p.m.**  
**Wise Nature Center**

Nickolas Butler is the author of the novel Shotgun Lovesongs and a collection of short stories entitled, Beneath the Bonfire. Beaver Creek Reserve's book club picked Butler's newest novel, The Hearts of Men for their March book club read. Butler will be reading from his newest novel, answering questions from the audience, and sharing where he gets some of his ideas. There will be a book signing following the program.

*Registration and full payment required by April 13.*

**Friends Free Nonmembers \$5**

**Phenology Hike for Elder Explorers**

Three Date Options:

**Thursday, April 20, 9:30-11:00 a.m.**

**Thursday, May 18, 9:30-11:00 a.m.**

**Thursday, June 8, 9:30-11:00 a.m.**

**Wise Nature Center**

This naturalist-led, 60-minute hike on reserve trails will document the changes taking place in the woods at Beaver Creek. The hike will be capped off with coffee and a treat and further discussion about the changes and things we've seen on the hike. Hikers should expect about a mile-long hike with uneven terrain and stairs to negotiate. This program is targeted for adult nature lovers 55 and older. Participate monthly or register for one week at a time — the choice is yours. Pricing is per hike, register for one or all!

*Registration and full payment required by April 18, May 16, and June 6 respectively.*

**Friends \$3 Nonmembers \$5**



## Frog Fest

**Wednesday, April 26, 7:00 -10:00 p.m.**  
**Wise Nature Center**

Frog Fest 2017 is an annual event not only at Beaver Creek, but throughout Wisconsin each spring as the ponds begin to thaw. The Wisconsin Frog Fest circuit hosts 11 frog performers and 1 toad. Join Reserve naturalist Ruth Forsgren as she helps you to identify by sight and sound our local performers. Weather and trail conditions permitting, the evening will end with a hike down to Beaver Creek's own frog chorus marsh. Dress appropriately for cool evening weather and possible muddy terrain. A flashlight may also prove helpful. Program is appropriate for school age children through adults.

*Registration and full payment required by April 24.*

**Friends Adult \$5, Child \$3**  
**Nonmembers Adult \$8, Child \$5**

## Acoustic Bat Monitoring

**Wednesday April 26, 7:30-9:15 p.m.**  
**Citizen Science Center**

Wisconsin has seven species of bat, four of which are threatened and three are listed as Species of Greatest Conservation Need. With White-nose Syndrome threatening bats across much of the United States, there is no better time to assist in this citizen science opportunity. Join us to learn about Wisconsin's bat species and how to conduct acoustic monitoring and bat roost monitoring surveys in the Chippewa Valley. To end the program we will step into the night and learn how to use the Citizen Science Center's portable acoustic bat monitoring device to assist state bat biologists with collecting data about these misunderstood night flyers.

*Registration and full payment required by April 25.*

**Friends \$5 Nonmembers \$8**

## Spring Evening Bird Hikes

**Two hikes:**

**Tuesday, May 2, 5:30-7:30 p.m.**  
**Tuesday, May 16, 5:30-7:30 p.m.**  
**Wise Nature Center**

May is an exciting time for birds at Beaver Creek as migrants are moving north and stop here to rest and re-fuel. Join a Reserve Naturalist for an early evening walk to see who we can find on the trails. All levels of bird enthusiasts are welcome. These hikes are designed

for adults to upper elementary-aged children. Please note that these are two separate hikes; you may attend either one or both, but if attending both, you must register for both.

*Registration and full payment required by May 1 and May 15 respectively.*

**Friends \$3 (per hike)**  
**Nonmembers \$5 (per hike)**

## Spring Wildflower Walk

**Thursday, May 4, 5:00-6:30 p.m.**  
**Putnam Park at UWEC**

Join UWEC Professor Joe Rohrer and BCR Volunteer Naturalist Pam Rasmussen for a guided wildflower walk through Putnam Park on the UWEC Campus. The spring ephemerals are spectacular. Please wear sturdy shoes and dress for the weather. Meet at the Putnam Parking lot on the Universities Lower Campus. Link to campus map:

<https://www.local.uwec.edu/about/maps-directions/upload/campus-parking-map.pdf>

*Registration and full payment required by May 1.*

**Friends: FREE Nonmembers \$5**



## Bee Keeping 102 – You Are a Beekeeper, Now What?

**Saturday, May 6, 8:00 a.m.-3:30 p.m.**  
**Wise Nature Center**

You got your bees in their hive. Now what? Learn how to properly manage your bee hive while they are foraging and packing away pollen and honey. Topics will include how to perform a hive inspection, managing your hive's growth, hive swarming, and when to add honey supers. Members of the Chippewa & Eau Claire Beekeeping Club will be providing the training. Please bring a bee veil or bee suit as we open an onsite bee hive for examination. Also bring a sack lunch and notebook. If desired, lunch will be catered from Chicken Chasers in Fall Creek for \$8.00; please indicate if you wish to order lunch and bring cash the day of the program.

*Registration and full payment required by May 3.*

**Friends \$40 Nonmembers \$45**

## Spring Bird Hike and Banding Demo

**Saturday, May 6, 6:30-11:00 a.m.**  
**Wise Nature Center**

Spend the morning with Beaver Creek Bird Banders. Begin the morning with a bird hike at the Reserve to look for spring migrants. Then wander back to the Nature Center for a banding demonstration. This is a great opportunity to see birds both through the binoculars and in hand. Learn about bird identification, bird behavior, and why we band them. This program is open to bird enthusiasts of all abilities. The program begins at 6:30 a.m. and hikers should meet at the Nature Center and wear comfortable clothing. If there is thunder, lightning or moderate to heavy rain in the area, the program will NOT be held. Don't forget your binoculars and field guides.

*Registration and full payment required by May 3.*

**Friends \$3 Nonmembers \$5**

## Make a Thunder Gourd

**Saturday, May 6, 9:00 a.m.-12:00 p.m.**  
**Wise Nature Center**

Looking for a unique gift? Come to Beaver Creek Reserve and make a thunder gourd! In this two hour class you will decorate a gourd and attach a membrane and spring. When finished the beautiful gourd makes a wonderful thunderous sound. Program is suitable for ages 8 to 100 but all children must be accompanied by an adult. Younger children could assist with painting and decorating. Price is per gourd. No more than 3 people per gourd. Additional kits will also be for sale during program.

*Registration and full payment required by April 28.*

**Members \$30, Nonmembers \$35**



# Naturalist Notes

## The Rodent That Shaped America

It is funny to me that for almost two hundred years, the leading economic activity west of the settled areas of North America was driven by the fur trade. The most sought after fur during that time was that of our largest rodent, the beaver. Not only was the fur trade where the money was, it was the reason behind most of the exploration of the West: searching for new fur-bearing populations and the easiest routes to transport them.

The North American beaver (*Castor canadensis*) is one of two members of the genus *Castor*; the other is the Eurasian beaver. Our beaver has a range that encompasses most of North America, with the exception of the deserts in the southwestern United States, Mexico, and the far northern reaches of Canada. Prior to European settlement, the North American beaver population was estimated to be between sixty to four hundred million animals. Current populations are estimated at between six and twelve million. The unregulated fur trade during the eighteenth and nineteenth centuries, along with habitat loss, are the presumed reasons for the significant decline.

Beavers are fascinating critters. They are designed specialists for their role in the environment. The average adult beaver will be three to four feet in length, including their most recognizable feature: their tail. They typically weigh between forty-five to sixty pounds, with the world record currently held by one Wisconsin beaver that weighed 110 pounds!

Not exceedingly graceful on land, the beaver is well-suited for its semi-aquatic lifestyle. Beavers can swim five miles per hour and stay underwater for up to fifteen minutes. They have built-in nose and ear valves that close when they dive, along with nictitating membranes (mostly clear eyelids) that protect the eyes while

allowing the beaver to see underwater). They have specialized lips that close behind those famous, ever-growing, orange teeth. This allows the beaver to carry food and building materials without drowning.



*The beaver's orange teeth are an identifying characteristic. Photo credit: Back Off by Erik Huebler*

Their tail not only makes them easily identifiable, but it also serves several purposes. If you happen upon a beaver, it will quickly disappear into the water. Before it leaves however, it will often smack its tail on the surface, creating a fantastic spray and loud slap. The loud noise is meant as a warning for any members of the family that might be out-and-about. Beaver parents, kits (babies of the current year) and the two-year-old kits, are often found living and working together. The beaver's tail also serves as a rudder or steering wheel as they maneuver through the underwater jungle gym that they call home. In addition the tail works like a prop, keeping these little beach balls upright and steady as they chew down trees for food and building material. Like any animal that hopes to survive the winter, beavers need to store extra fat; being quite robust critters already, extra fat is stored in the tail.



Beavers are well known for their large, mound-shaped lodges and river stopping dams. The largest dam in the world, over 2800 feet long, was found with the Google Earth satellite and is located in Wood Buffalo National Park, Canada. Our beavers here at the Reserve try to build dams, but the sandy soil causes them to be washed out too quickly. Without a dam to create a pond, the beaver cannot build its lodge, so beavers at Beaver Creek live in hollowed out areas along the banks of the creek. Because beavers move when they deplete their food sources such as aspen, birch, and maple trees, there is not one consistent place at the Reserve to find them. Beavers are also nocturnal, which can make spotting these busy critters tough. While walking the trails below the nature center keep, an eye out for signs of beaver activity including dams, chewed down trees, tracks, and branches sticking out of the water in strange places. If you happen to spot a beaver, freeze, and watch it for as long as it allows.

Ruth Forsgren



*Evidence of beavers like this chewed tree, indicate there are likely beavers living nearby. Photo credit: Beaver's Work by Ann Gordon*



## Use Your Smartphone to Map and Report Invasive Species

**Thursday, May 11, 5:00-8:00 p.m.**  
**Citizen Science Center**

Join Anne Pearce from UW Extension and the Wisconsin First Detector Network (WIFDN) to learn about invasive species, their impacts in Wisconsin, tools to identify, and how you can help researchers by mapping your findings. WIFDN is a citizen science network that empowers people to take action against invasive species through invasive species monitoring, management, and outreach. In this session, WIFDN will give you the tools to identify invasive species and introduce you to the Great Lakes Early Detection Network invasive species reporting app. Information submitted to the app becomes part of a national database providing information for land managers and researchers. Please bring a brown bag dinner and be prepared to spend time outside.

*Registration and full payment required by May 8.*

**Friends \$5    Nonmembers \$8**

## Native Plant Sale

**Saturday, May 13, 8:30 a.m.-1:00 p.m.**  
**Wise Nature Center**

Enhance your garden or yard with native plants from Beaver Creek Reserve's greenhouse! Expertly grown by Master Gardeners, a wide variety of native grasses, herbs and wildflowers will be for sale. Gardening experts will be on hand to answer all your questions. Great plants - great prices! Proceeds will help support activities at Beaver Creek Reserve

## Tiffany Train Ride

**Saturday, May 20, 7:00 a.m.-12:00 p.m.**  
**Tiffany Bottoms State Natural Area**

Ride the rails through the Tiffany Wetland Bottoms with the Citizen Science staff from Beaver Creek Reserve. Spend the day on an open-air, antique train while exploring the wetlands. The round-trip ride, approximately 14 miles, will let you see what makes these wetlands so unique and important to our plant and wildlife habitat. Be sure to pack a cooler with snacks and refreshments for the day while we tour and hike the trails, 0.25-0.5 miles each. Participants should dress for the

weather and possibly wet terrain. Bring binoculars and any desired field guides. Rain or shine, don't miss this exciting event! Maps and directions available on our online event listing or contact BCR.

*Registration and full payment required by May 18.*

**Friends \$25    Nonmembers \$35**

## Keeping Kids Entertained on the Trail

**Saturday, May 20,**  
**Two Sessions: 10:00-11:30 a.m.**  
**and 1:00 p.m.-2:30 p.m.**  
**Wise Nature Center**

A day hike offers a great opportunity for families to bond and to instill children with an understanding and appreciation of nature. This session will provide and allow families to experience activities to get kids excited about a day hike; trail games that will help kids better understand and appreciate nature; and post-hike activities to keep kids excited about the sport. The games and activities are culled from the experiences of bestselling hiking guidebook author Rob Bignell, who with his nine-year-old son Kieran have been featured in [National Geographic](#): Kids magazine and the [Minneapolis Star-Tribune](#). This program is appropriate for families with children ages 6 months to 13 years. Please dress for the weather and bring comfortable shoes for walking and a water bottle.

Rob Bignell will be signing and selling books from his popular guidebook series after the hike.

*Registration and full payment required by May 17. Pricing is per family of 2-5 people. Larger families please register for two spots.*

**Friends \$6    Nonmembers \$10**

## Mussel Mania!

**Tuesday, May 23, 6:30-8:00 p.m.**  
**Citizen Science Center**

Jesse Weininger, Conservation Biologist with the WDNR, will be joining us for an evening of mussels --not the large bicep kind but the aquatic mollusk kind! This presentation will focus on the biology of freshwater mussels, their importance, and how volunteers can contribute to their preservation. Get to know some of the species found in our local streams!

*Registration and full payment required by May 19.*

**Friends \$3    Nonmembers \$5**

## Herbal First Aid Walk for Families

**Wednesday, May 24, 6:30-7:30 p.m.**  
**Wise Nature Center**

Looking for natural ways to heal stomach aches, scratches, and general aches and pains? Join Eau Claire herbalist Kerri Kierman, of River Prairie Apothecary, on Beaver Creek's trails to learn about plants that are found locally, and have medicinal powers to heal you and your family. Participants should dress for the weather and bring a notepad and pencil if you want to take notes.

*Registration and full payment required by May 22.*

**Friends \$5    Nonmembers \$8**

## Tadpole Toddler Camp Featuring Lily Pad Lab

**Monday, June 19 to Friday, June 23,**  
**9:45-11:45 a.m.**  
**Wise Nature Center**

Now you and your smallest explorers (ages 2-4) will have a chance to join in all the fun at Beaver Creek Reserve! Get ready for a morning of music, movement, meaningful messes, munching and lots of exploration of our natural world! Join the teachers from Lily Pad Lab and BCR staff and volunteers for this first-ever week-long camp, specifically designed for little learners. See the Summer Camp pages for more information and pricing.



## Spring and Summer Volunteer Opportunities



### BUTTERFLY HOUSE LAB

**Training: Tuesday, June 8, 7 p.m.**

Volunteers are needed from early June through mid-September. This exciting volunteer opportunity involves the daily care and feeding of caterpillars, monitoring chrysalis development, and releasing butterflies into the Butterfly House. Lab workers are needed daily Monday through Saturday, for one to two hours, between 10 a.m. and 2 p.m., and Sunday, 12-2 p.m., to help raise caterpillars in our lab. To sign up for this training call 715-877-2212. If you cannot attend this training session, please contact the Reserve to set up a personal training time.



### BUTTERFLY HOUSE GUIDE

**Training: Monday, June 29, 7 p.m.**

Enjoy learning about our native butterflies and helping visitors to identify them while volunteering in our beautiful Butterfly House as a Volunteer Guide! Guides answer questions and share their love and enthusiasm for butterflies. Don't think you know enough about butterflies? Don't worry -- this is a great way to learn on the job! Come and see what it's all about! Volunteers are needed daily Monday- Saturday, 11 a.m.-3:00 p.m., and Sundays 12:00-3:00 p.m., from July 5 through early September. To sign up for this training call 715-877- 2212. If you cannot attend this training session, please contact the Reserve to set up a personal training time.

# Save the Date

## Volunteer Appreciation Potluck

Thursday, April 20  
6:00 - 8:00 p.m.

Bring a dish to pass.  
BCR will provide the  
main course and  
dessert. More details  
to follow.

Please RSVP to  
AJ Leiden at 715-877-2212 or  
aj@beavercreekreserv.org



In 2016 Beaver Creek Reserve had more than 280 volunteers contribute approximately 4,300 hours! We are excited to celebrate your accomplishments and valuable contribution!

*Congratulations!*  
**On 25 years!**

Join us in congratulating Ruth Forsgren on 25 years as a Naturalist Educator at BCR! We heartily thank her for her time, energy and passion for her job!





# MONTHLY CLUB MEETINGS

## NATURE STORE SALES

Save 15% of these great items in the Nature Store

### MARCH

- Stuffed animals
- Cookie cutters
- ALL books

### APRIL

- Tree-related items
- Socks
- Field guides

### MAY

- Pouches & bags
- Hummingbird feeders
- Plant books



**Thank you to everyone who attended and volunteered for the candlelight snowshoe hike and the Frosty Frolic!**

**Photos by Ruth Fiosgren**



## Quilting Club

**Second & Fourth Mondays,  
1:00-4:00 p.m.**

The Quilting Club meets the second and fourth Monday of each month to work on individual projects and to share ideas on quilting. Beginners to seasoned quilters are always welcome.

## Beaver Creek Bird Club

**Second Tuesday, 7:00 p.m.**

Bird Club meets at BCR on the second Tuesday of each month at 7:00 p.m from September to May. The club is open to all bird lovers.

## Chippewa Valley Watercolor Artists

**First Wednesday, 9 a.m.-12:00 p.m.**

**All watercolorists welcome**

The Chippewa Valley Watercolor Artists meet the first Wednesday of each month to paint, critique, and share information related to watercolor painting. All watercolor artists, beginning to advanced, are invited to participate. For information, contact Jan at 715-874-5870 or at [kippenjp@uwec.edu](mailto:kippenjp@uwec.edu).

## Beaver Creek Photo Club

**Third Thursday, 7:00 p.m.**

Everyone welcome! The Beaver Creek Photo Club meets the third Thursday of the month January through May and September through November. No December Meeting.

## Chippewa Valley Astronomical Society

**First Tuesday, 7:30 p.m.**

**Everyone welcome**

The Chippewa Valley Astronomical Society (CVAS) meets on the first Tuesday of the month at 7:30 p.m. Most meetings are at Hobbs Observatory, but are occasionally held off-site. The CVAS is open to anyone with an interest in astronomy. For more information, please contact the Reserve or check out the Club's web site at [www.cvastro.org](http://www.cvastro.org).



## HOBBS OBSERVATORY HAPPENINGS

Come learn fascinating facts about the night sky from members of the Chippewa Valley Astronomical Society (CVAS) as they host public programs on the third Saturday of each month at 8 pm in the Hobbs Observatory. There will be a 45-60 minute presentation on astronomical related topics by CVAS members.

Go to [www.cvastro.org](http://www.cvastro.org) for a list of upcoming topics. If skies are clear and temperatures permit, the domes will be open for public observing following the program.

Public viewing is also available on CLEAR Saturdays from May through October starting about an hour after sunset (as CVAS volunteer staffing permits).

For more information on these programs, please contact BCR at (715) 877-2212 or visit :[www.cvastro.org](http://www.cvastro.org) or [www.beavercreekreserve.org](http://www.beavercreekreserve.org)



*Star Gazers by Ryan Zimmerman*



SI County Road K | Fall Creek, WI 54742  
beavercreekreserve.org  
CONNECTING PEOPLE WITH NATURE

Return Service Requested

Non-Profit Org  
US Postage  
PAID  
Permit No. 1557  
Eau Claire, WI 54701



## FRENCH TOAST BREAKFAST



- Maple Syrup Programming
- CV Water Colorists open house
- Kids activities & crafts
- Bird banding demonstration
- Visit with BCR Critters
- Hobbs Observatory open house

**Saturday, March 11  
8:00 a.m.-12:30 p.m.**

**PRESALE TICKETS:**  
Adults \$7  
Children \$4 (12 & Under)

**AT THE DOOR:**  
Adults \$8  
Children \$5 (12 & Under)

Sponsored by  




# Native Plant **SALE**

**Saturday, May 13  
8:30 am - 1:00 pm**

Wide variety of native  
flowers, herbs and grasses

Experts on hand to  
answer questions

All proceeds benefit  
Beaver Creek Reserve







# Summer Camps 2017



## 2017 Camp Offerings At-a-Glance

### B is for Birding

Tuesday, June 13, 8:00-11:00 a.m.  
Ages 7-9

### Nature Nuts

Monday, June 19 to Friday, June 23  
9:30 a.m.-12:00 p.m.  
Nuts: Ages 5-6  
Sprouts: Ages 7-8  
Earth Detectives: Ages 9-11

### Tadpole Toddler Camp

Monday, June 19 to Friday, June 23  
9:45-11:45 a.m.  
Ages 2-4

### R is for Reptiles

Tuesday, June 27, Two sessions:  
9:30-11:30 am and 1:30-3:30 p.m.  
Ages 5-6

### The Nature of Photography

Monday, July 10, 1:00-3:30 p.m.  
Ages 10-12

### Girls Outdoors Series: Air and Fire

Thursday, July 13, 9:30 a.m.-12:00 p.m.  
Girls Ages 10-12

### Shooting Sports Camp

Friday, July 14, 9:30-12:00 p.m.  
Ages 9-12

### Girls Outdoors Series: Fishing

Tuesday, July 18, 9:30 a.m. -12:00 p.m.  
Girls Ages 10-12

### Girls Outdoors Series: Geocaching

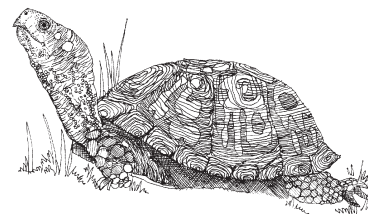
Tuesday, July 25, 9:30 a.m.-12:00 p.m.  
Girls Ages 10-12

### Wonders of Butterflies Camp

Monday, July 31 to Wednesday,  
August 2, 9:30 a.m.-12:00 p.m.  
Ages 8-11

### Budding Butterflies

Tuesday, August 8  
Two sessions offered:  
9:30 a.m.-12:00 p.m. and 1:00-3:30 pm  
Ages 5-7



## Camp Registration Guidelines

**Registration:** Complete online at [www.beavercreekreserve.org/summercamps](http://www.beavercreekreserve.org/summercamps). Registration deadlines are **Wednesday, June 1**.

**Payment:** Full payment (with pre-registration) must be received by **Wednesday, June 1**. We accept VISA, MasterCard, Discover, personal check or money order. To pay with cash, check or money order, please register in person at Beaver Creek Reserve during our normal business hours. We will not be taking registrations through the mail.

**Refund Policy:** Cancellations require a seven-day notice prior to camp in order to receive a full refund minus a \$20 processing fee. Cancellations after that will receive no refund. No exceptions.

**FREE Camps for area School District students:** As of March 1st, the Eau Claire area school district is the only district to confirm their offerings. For up to date offerings, visit our website at [www.beavercreekreserve.org](http://www.beavercreekreserve.org). The free camp offerings are labeled as follows:

Eau Claire = 

**Camp scholarships:** Scholarships are available for certain camps; check our website for details.

**\*\*Please note** due to the active nature of the program, camps are unable to accommodate persons with severe emotional problems, serious physical, mental, or medical limitations, or those who have a severe cognitive disability.

# 2017 Summer Camp Opportunities

## B is for Birding

Tuesday June 13, 8:00-1:00 a.m.

Ages 7-9

Birds are extremely cool creatures! They come in all colors and shapes. And most of them can FLY! Designed to help young nature lovers (age 7 to 9) discover the marvels of the bird world, this camp will introduce beginning ornithologists to bird identification, proper use of binoculars and simple field guides. After some inside classroom time, we will take our new-found skills on the trail to search for birds. Warning: your child may develop a lifelong love for the birds.

Friends \$20      Non-members \$30

## Nature Nuts/Sprouts/Earth Detectives

Monday, June 19 through Friday, June 23,  
9:30 a.m.-12:00 p.m.



**Nature Nuts, Ages 5-6 (must be 5 by first day of camp)**

Nature Nuts is designed to encourage the inherent curiosities of young nature lovers. Daily activities are geared to discovery of the natural world. Adventures may include things like adopting a tree, meeting a Rock Wizard, searching for the elusive pieces of the rainbow, and creative art projects.

### Sprouts, Ages 7-8

Sprouts are given opportunities to expand their knowledge of our natural world. Programs rotate every two years, Sprouts uncover details about animal groups one year and the other year Sprouts explore new worlds through habitat study. Whether knee deep in a stream, or hiking through our forest communities, Sprouts develop a basis for a lifetime of nature appreciation.

### Earth Detectives, Ages 9-11

Whether they are panning for gold or hunting for frogs, Earth Detectives enjoy getting their feet muddy as they investigate the forest, prairie, stream, and pond habitats of the Reserve. The hands-on investigations give Earth Detectives an exciting up-close look at the natural world during their weeklong exploration.

Friends: \$50      Nonmembers: \$60

## Tadpole Toddler Camp Featuring Lily Pad Lab

Monday, June 19 - Friday, June 23

9:45 - 11:45 a.m.

Ages 2-4

Now you and your smallest explorers will have a chance to join in all the fun at Beaver Creek Reserve! Get ready for a morning of music, movement, meaningful messes, munching and lots of exploration of our natural world! Join the teachers from Lily Pad Lab and BCR staff and volunteers for this first-ever week long camp, specifically designed for little learners. Parents and children will work together as they join in group activities and stations designed to encourage exploration, experimentation and FUN! Register for single days or for the whole week and save!

### Daily Topics

**Monday** – Meaningful Messes and Trees (Taught by Lily Pad Lab)

**Tuesday** – Fabulous Fish (Taught by BCR)

**Wednesday** – Meaningful Messes and the Weather (Taught by Lily Pad Lab)

**Thursday** – Beautiful Bugs (Taught by BCR)

**Friday** – Meaningful Messes and Monarchs (Taught by Lily Pad Lab)

*Pricing is per child per day. Each child must attend with an adult.*

### Single Day Pricing

Friends: \$10, Nonmembers: \$15

### Full Week Pricing

Friends: \$45, Nonmembers: \$60

## R is for Reptiles Morning

Tuesday, June 27, 9:30-11:30 a.m.

Ages 5-6

This camp is perfect for the child that is fascinated with animals and learning more about them. We will learn about some WI reptiles, meet some of the reptiles that live here at the nature center and will take to the trails to see if we can find any of the reptiles that call the Reserve home.

Friends \$20      Nonmembers \$30

## R is for Reptiles Afternoon

Tuesday June 27, 1:30-3:30pm

Ages 5-6



This camp is perfect for the child that is fascinated with animals and learning more about them. We will learn about some WI reptiles, meet some of the reptiles that live here at the nature center and will take to the trails to see if we can find any of the reptiles that call the Reserve home.

Friends \$20      Nonmembers \$30



## The Nature of Photography

Monday July 10, 1:00-3:30 p.m.

Ages 10-12



A picture can be worth 1000 words or may not speak to you at all. This class is designed to help young, beginning photographers find the story they want their photograph to tell. The students will spend some time learning basics of what makes a "good" photo, they will then take this newfound knowledge out on the trail to take some images. The session will end back inside as we look at everyone's images and figure out what we like or dislike about the images and start defining our own style.

Beaver Creek will have basic cameras for use and students will be able to take their images with them if they provide a memory stick.

Members \$25      Nonmembers \$35



# 2017 Summer Camp Opportunities

## Girls Outdoors Series: Air and Fire

Thursday, July 13, 9:30 a.m.-12:00 p.m.  
Girls Ages 10-12

The Girls Outdoors Series (GOS.) is designed to give girls a chance to try their hand at different outdoor activities. In this installment of GOS, participants will learn to safely handle and shoot air rifles from a long time hunter safety instructor. We will also explore the art of safely starting and maintaining a campfire.

**Members \$20 Nonmembers \$30**

## Shooting Sports Camp

Friday, July 14, 9:30 a.m.-12:00 p.m.  
Ages 9-12

Try your hand at pellet rifles, sling shots, and compound bows. Then test your skills at Tomahawk throwing! This camp is all about having some fun and learning how to safely and effectively explore the world of shooting sports! Appropriate for ages 9-12.

**Friends \$25 Nonmembers \$30**

## Girls Outdoors Series: Fishing

Tuesday July 18, 9:30 a.m.-12:00 p.m.  
Girls Ages 10-12

The Girls Outdoors Series (GOS.) is designed to give girls a chance to try their hand at different outdoor activities. In this installment of GOS, participants will first practice casting and then will take their new found talents and try to catch fish at a nearby pond. Fishing poles, bait and transportation included.

**Members \$45 Nonmembers \$55**

## Girls Outdoors Series: Geocaching

Tuesday July 25, 9:30 a.m. -12:00 p.m.  
Girls Ages 10-12

The Girls Outdoors Series (GOS.) is designed to give girls a chance to try their hand at different outdoor activities. In this installment of GOS, participants will learn how to use a GPS (global positioning system) unit to find their way to hidden caches around the Reserve.

**Members \$20 Nonmembers \$30**

## Wonders of Butterflies Camp

Monday, July 31 to Wednesday, August 2,  
9:30 a.m. -12:00 p.m.  
Ages 8-11

Come and explore the wonderful world of butterflies this summer at the Reserve. Campers will learn about Wisconsin butterflies, their importance to the environment, and basic butterfly biology. Each participant will help raise a caterpillar for the Reserve's Butterfly House, and provide daily care for it, learning first-hand the life cycle of butterflies. Along with our learning we'll also spend time crafting butterfly art projects and catching butterflies for the Butterfly House here at Beaver Creek! It's an exciting butterfly-filled time for boys and girls ages 8-11.

**Friends \$40 Nonmembers \$50**



## Budding Butterflies Morning

Tuesday August 8, 9:30 a.m.-12:00 p.m.  
Ages 5-7

Butterflies are almost magical creatures that capture the heart and imagination of almost everyone that sees them flitting about the garden. This camp is designed for the young lepidopterist (butterfly studier), ages 5 to 7 years old, (must already be 5 on first day of camp). Join us as we will learn about the magic of the butterfly life cycle, go butterfly catching, try to be kissed by a butterfly and learn a few of our local species of butterflies.

**Friends \$20 Nonmembers \$30**

## Budding Butterflies Afternoon

Tuesday August 8, 1:00-3:30 pm  
Ages 5-7



Butterflies are almost magical creatures that capture the heart and imagination of almost everyone that sees them flitting about the garden. This camp is designed for the young lepidopterist (butterfly studier), ages 5 to 7 years old, (must already be 5 on first day of camp). Join us as we will learn about the magic of the butterfly life cycle, go butterfly catching, try to be kissed by a butterfly and learn a few of our local species of butterflies.

**Friends \$20 Nonmembers \$30**



# 2017 BEAVER CREEK SUMMER CAMP REGISTRATION

## Getting ready to register for a summer full of great activities?

Register online at [www.beavercreekreserve.org](http://www.beavercreekreserve.org), by phone at 715-877-2212 or in person at the Nature Center. (we are no longer taking registrations by mail)

**Please be prepared to provide the following information when registering:**

- Child's age at the start of camp
- Child's T-shirt size
- Child's School District
- Credit Card Number, expiration and CCV code
- Child's Doctors name, address and phone number
- Child's emergency contact (other than Parents) name, phone number and relationship to the child.
- Child's allergies, medication, or dietary needs
- If there is a need for a buddy (we will try to accommodate requests if possible)

**For ALL Summer  
Camps: Registration  
and payment are  
due by JUNE 1**

## Not a member?

**Become a member today! A family membership is only \$40 per year!**

**Members receive great benefits like:**

Free daily admission • Free Annual Beaver Creek Nature Photo Calendar  
Discounts on programs and summer camps • 10% discount in the nature store  
Invitation to members only events and much more!

## *Want to help? It take a lot to run our camps!*

We are looking for volunteers to help us with Nature Nuts, Sprouts, Earth Detectives and Butterfly camps. Whether it is assisting with activities or prepping snacks, we can use your help! Volunteers must be available Monday-Friday. Please contact AJ Leiden at 715-877-2212 or [aj@beavercreekreserve.org](mailto:aj@beavercreekreserve.org) for more information



**S1 COUNTY RD K, FALL CREEK WI**  
715-877-2212 | [bcr@beavercreekreserve.org](mailto:bcr@beavercreekreserve.org)  
[www.beavercreekreserve.org](http://www.beavercreekreserve.org)





## FROM THE DESK OF THE DIRECTOR



### CONTACT

Phone & Fax  
715-877-2212

Email  
[bcr@beavercreekreserve.org](mailto:bcr@beavercreekreserve.org)

Website  
[www.beavercreekreserve.org](http://www.beavercreekreserve.org)

### FRIENDS BOARD OF DIRECTORS

Kathy Clark..... President  
Becca Bestul..... Vice President  
Warren Gallagher..... Secretary  
Dustin Hurtgen..... Treasurer

### MEMBERS

Bob Schmidt, Heather Deluka, Kathy Forsythe,  
Karen Hauck, Mark Wise, Joe Sanfelippo, Troy  
Anderson, Jonathan Leuthe, Robert Prock, Bruce  
Willet, Blake Tollefson

### ENDOWMENT BOARD

Marty Voss..... Chair  
Bev Stelljes..... Vice Chair  
Dan Freund..... Treasurer  
Regina Butler..... Secretary

### MEMBERS

Dave Carlson, Kathy Clark, Bill Faherty, Vicki Funne  
Reed, Steve Gausman, Bill Heth, Rick Koziel, Kate  
Lindsay, Clint Markin, Ed Mishefske, Dan Mittag,  
Greg Moore, Jim Murray, Pam Rasmussen, Wendy  
Sheasby, Dick Ziemann

Here at Beaver Creek Reserve we use a business model that primarily runs on programming, events, memberships, grants, and rentals. Donations to the annual operations of Beaver Creek compose only 3% of the annual budget. I don't mention this to undervalue that amount, because these donations still account for over \$20,000 donated to Beaver Creek without a formal campaign and are crucial forms of support. I mention this to demonstrate to our donors that their donations are strong investments in a successful non-profit. Receiving income from a diversity of sources allows Beaver Creek Reserve to remain stable both in times of economic prosperity and adversity. On a national scale we are far and ahead of our peers, some of whom rely on 25-50% of their operation budgets to come from annual giving. Along with monetary donations, the over 10,000 hours of volunteerism we receive annually allows our mission to reach thousands more people each year, compared to if we only had paid staff help. Volunteers keep Beaver Creek alive with their new thoughts, ideas, and passion that fuel the programs and staff with renewed energy. The following list is a formal acknowledgement of all of those people and their accomplishments. On behalf of myself and the Board of Directors, I want to give a heartfelt thank you to everyone who has contributed to Beaver Creek's success this year.

Additionally, you will see that we have another list of contributions from this year's Endowment Fund donations. Beaver Creek has long been able

to raise donations for its future success, and for special projects outside its day-to-day operations. In 2016, our campaign brought in more than \$57,000

for future growth and projects. Not only do we have increasing funds for future opportunities, but the Endowment has been picking key projects to help Beaver Creek achieve its mission. Last year, they made a major donation to the Discovery Room project; this year, they chose to invest in our new website, an AmeriCorps position, and scholarships that allow school children to participate in field trips. I can tell you that these investments are paying great dividends for our mission. Prior to these investments, we had seen a dip in attendance. In 2015, our daily walk-in visitation was 5,524 visitors; after the new website and Discovery Room were finished in 2016, we saw 10,064 visitors, an 82% increase. While many of these visitors were new, our long term members have also been enjoying these changes. Thanks to your donations, we are seeing more people than ever!

Whether you donated bird seed to the feeders, your valuable time to the Butterfly House, or dollars to help with scholarships, Beaver Creek wins. We are so grateful to you all and cannot thank you enough.

*Erik Keisler, Executive Director*



# DONATIONS 2016

## General Donations (monetary)

Amazon Smile  
Benevity Community Impact Fund  
Clifton Larson Allen  
Michael Colgan & Joanna Quast  
Judy Dekan & Rick Koziel  
Eau Claire Energy Cooperative  
Eau Claire Marathon  
Goodshop  
William & Patricia Henke  
Jacqueline Hoeft & Fred Proett  
Huebsch Services  
Indianhead Insurance Agency  
Jeff & Karen Jones  
Larry Kent  
Joseph Kurz  
Clint & Brianne Markin  
McDonough Manufacturing Co  
Nestle  
Diane Paul  
Karen & Ted Peters  
Mary & Gary Rambo  
Daniel & Ann Shuda  
Silver Spring Foods  
Susan Singerhouse  
Sons Of Norway - Loven #29  
Unity Bank  
US Bank Foundation  
Wisconsin Environmental Education  
Foundation  
Xcel Energy Foundation (matching gift  
from membership)

## Donations to Specific Programs/Areas (monetary)

### For the Discovery Room Renovation

Baker Tilly/Virchow Krause  
Citizens Community Federal  
Clearwater Dental  
Clifton Larson Allen  
Eau Claire Morning Rotary Club  
Kristo Orthodontics  
Lions Club - Eau Claire/Seymour  
McDonough Manufacturing Co  
Oak Park Dental  
People's Bank  
Per Mar Security Services  
RCU  
Tamarack Materials  
Trout Unlimited WI Clear Waters  
Wylie and Leopold Andre  
Jeff & Lori Bartynski  
John & Terri Buhrow  
Shasta Chamberlain  
Jack & Carolyn Daniel  
Albert & Beverly Harper  
William & Patricia Henke  
Dr. & Mrs. William Heth & Jeanie Lubinsky  
Neil Hodorowski  
Vicki & Gary Hoehn  
Dustin & Sara Hurtgen  
Larry & Teresa Jolivette

Jack & Judy Kolar  
Donna & Ron Kuhnen  
David Lundberg  
Don & Patricia Marjala  
Christine McCorkle  
Roger & Kathi Michelson  
Karen & Daniel Mittag  
Christina & Charles Norseng  
Rebecca & Jeremy Ostedt  
Steve & Lois Raether  
Ronald A & Lynn W Sandquist  
Bob and Carmen Schmidt & David Peters  
Pat Simonsen  
John & Julie Sirianni  
Susan & Roger Tietz  
Aidan Van Helden  
Maureen & Paul Vanyo  
Steve & Judy Voitek  
Martin & Karen Voss  
Mark & Karen Wise  
Olga Wise  
Becky and Dave Wood

### For the Adopt-a-Bird Program

Sandra Barsamian  
Megan Blackwell  
Christine Finn  
Sean Kirkpatrick  
Ron Nemec  
Lynette Severson  
Emily Sutherland  
Jane & Robin Walsh

### For the Bird Banding Program

Camaraderie Club  
Easter Seals Wisconsin, Inc.

### For the Butterfly House

Georgene Britton  
Eau Claire Garden Club  
Richard & Kathleen Pawlowski

### For the Citizen Science Center

Sarah & Greg Newman

### For the Celebrate the Chippewa River Conference

Citizens United for Shoreland Protection  
Sierra Club - CV Chapter

## Memorials

### In Memory of Adele Carlson

Terry & Judy Valen

### In Memory of Alphonse Bauer for the Educational Scholarship Fund

Roberta Bauer  
Paul Benish  
David & Nancy Burdick  
Roy & Deloris Cropp  
Sara Eggebrecht  
Nicolle Ellious  
Mary & Chris Groh  
Steven & Peggy Husby  
Indianhead Food Service  
William & Rhonda Iversen  
Gerald & Mary Jacobson  
Karen & Randy Nelson  
Northwestern Bank  
John & Chris Poppe  
Carol & Richard Settar  
Woita & Associates

### In memory of Bette Wahl

Chippewa Valley Watercolor Artists

### In memory of Birdell Snudden

Steve Baumgardner  
John Dixon  
Charles & Nancy Helfenstein  
Bonnie Hennig-Piper & Lon Piper  
Thomas & Pamela Janssen  
CW & Mary Ann King  
James & Patricia Klabough  
Paula Kleintjes Neff & Terry Neff  
Barbara Magnuson  
Jean & Randall Mundt  
Wilburn & Alice Myers  
Patricia & David Reinardy  
Joyce Simpson & Janet Dow  
Catherine & Dale Southard

### In memory of Bruce Kelly

Karen & Daniel Mittag  
James & Marilyn Murphy for the Bird  
Banding Program



The Little Free Library at Beaver Creek was built by a local Eagle Scout Aaron Gregor as part of his final project. Cyndee Kaiser generously donated her time once again to paint the Little Free Library, after having painted the mural in the 3M Fledgling Forest in the Wise Nature Center. The idea to put a Library here was brought in by Jeanette Kelly, who wished to honor her late father, Bruce Kelly, a lover of books, nature, and kids. Donations were made in his name to help build the Little Free Library at Beaver Creek. This is just one example of how donations to Beaver Creek Reserve are used to benefit visitors. The Little Free Library is now open and always in need of book donations!



# DONATIONS 2016

Christine Schaaf for the Citizens' Science Center  
Judy & Jim Schwarzmeier for the Little Free Library

## **In memory of Carol Smith for the Table Saw Fund**

Larry & Barbara Bennett

## **In memory of Caroline Wirkus**

Diane Benson  
Rob & Susan Harrison  
Karin Jarvise  
Jim Jarvise

## **In memory of Connie Simonson**

Kathleen Evans

## **In memory of David Bodeau and Chewie Bodeau**

Corey Tower

## **In memory of Frank Schemberger**

Michael & Ann Arneson  
Mary Bement  
Rev. Sarah Bergstrom  
Donald Cardinal  
Dave & Barb Cizek  
Jim & Peggy Clare  
Dick & Lisa Erickson  
Bruce Franck  
Carol Gorton  
John & Jann Kohlhepp  
L.E. Phillips Family Foundation on behalf of Eileen and Maryjo Cohen  
Linda & Scott Nicastro  
Martha & Michael O'Halloran  
Paul & Alison Peterson  
Margaret Schemberger  
Jeanette Scheuermann  
B. S. & C. E. Smith  
John R Thurston  
Kristine Tofte Bruns  
Dennis & Susan Wepler

## **In memory of Helen Emery for the Butterfly House**

Darlene Cornell

## **In memory of James Olson**

Mitchell & Katherine Ayer  
Diane Dreher  
Jerry & Mary Foote  
Beth Ayer Garvin  
Wayne & Nona Hanson  
Patty & Jeff Henry  
Dorothy Jensen  
Marvin & Alice Johnson  
Gay Lindquist  
L.E. Phillips Family Foundation on behalf of Campus School Students Amy Alpine and Maryjo Cohen  
Kathleen Lundquist  
Bill & Karen McDonnell  
Emily & Gregg Moore  
Margaret Olson

Karen & Ted Peters  
Donna & Peter Raleigh  
Judy & Jim Schwarzmeier  
Anders & Barbara Shafer  
Allison Shuda  
Daniel & Ann Shuda  
Judith Snudden  
Patricia Spaulding  
Kathryn Teeters  
Ronald & Susan Wheeler Gloe  
Jessica Wiens  
Eleanor Wolf

## **In memory of June Aude**

Gary & Beverly Nyseth  
Alpha Delta Kappa Theta Chapter

## **In memory of LaVern Wieland**

Charlotte Wieland

## **In memory of LeRoy Schauer**

Gary & Beverly Nyseth

## **In memory of Lois Keisler**

Ken & Barb Stolp

## **In memory of Lorraine Fleming**

Pat Tomkins

## **In memory of Mary Ann Jain**

Ken Jain  
James & Karen McCrady  
Clayona Walter

## **In memory of Sharon (Sam) Winrich**

Fall Creek School District for the Butterfly House  
Dan Winrich for the Discovery Room Renovation  
Dolores Zimmerman

## **In memory of Steve Wise and in honor of Olga Wise for the Discovery Room Renovation**

William & Patricia Henke  
Castle Rock Organic Farms

## **Honorariums**

### **In honor of Phyllis Kurtz**

Janet Kurtz & Robert Morgan

### **In honor of Pat Henke's 80<sup>th</sup> birthday for the Discovery Room Renovation**

Hertha Preston  
Thelma & Gerald Schilling  
Terry & Judy Valen

### **In honor of Karen Wise's birthday**

Olga Wise

### **In honor of Albert and Beverly Harper**

Alan Harper

### **In honor of Alex Long's 5<sup>th</sup> birthday**

Richard & Geraldine Long

## **In Kind Items**

DS Vending  
Gollon Brothers Bait  
Pet Food Plus  
Stelter Redi-Mix  
Duane & Carol Cance  
Wayne Grosskopf  
Kristin Helgeson  
Chuck & Jan Lorentz  
David Lundberg  
Linda & Scott Nicastro  
Mike Prasher  
Steve & Lois Raether  
Steven Raith  
Christine Schaaf  
Christine Schaaf  
Vernon & Vivian Swanson  
Larry Weber  
Ellen Youngell

## **For the Discovery Room Renovation**

Eau Claire Woodworks  
David Saffert  
Sparky Photos

## **For the Butterfly House**

Chippewa Valley Growers

## **In Kind Services**

James & Marilyn Murphy

## **For the Annual Meeting**

DigiCopy  
Lisa Hardy  
Nina Logan  
Larry Bennett  
Terry Valen

## **For the Discovery Room Renovation**

Chippewa Valley Family  
Eau Claire County  
Hudson Electric  
Cyndee Kaiser  
Market & Johnson  
Rhom Construction LLC  
Stewart Crenshaw Photography

## **2017 Calendar Design & Layout**

Kris Gausman



# 2016 ENDOWMENT CAMPAIGN CONTRIBUTIONS

---

Sharon Bussard  
Paula & Andy Bussman  
Nickolas & Regina Butler  
Rory Cameron  
David & Susan Carlson  
Al & Monica Caron  
Dennis & Antoinette Ciesielski  
Linda & Dan Clark  
Wilma & Tom Clark  
Kathy Clark  
Matthew & Nancy Coffey  
Sue Covill  
Eileen Cvancara  
Jack & Carolyn Daniel  
Bob & Merrelyn Dawson  
Judy Dekan & Rick Koziel  
R Dale Dick  
Jeanine Dickinsen  
Exchange Club - EC Sunrise  
John & Alice Droske  
Jim & Carolyn Dunning  
Richard & Katherine Duplessie  
Jane Edson  
Tom & Kathy Edwards  
Sharp Photo and Portrait  
Don Ellickson  
Bill & Vicki Emery  
Dick & Lisa Erickson  
Janet Etnier  
Kathie & Greg Fahrman  
Mary & Ray Fandel  
Phillip & Barbara Fey Family Fund  
Allen & Mary Jo Fleming  
Jerry & Mary Foote  
Marge Fortun  
David & Evalyn Frasca  
Dr. & Mrs. Lou & Jan Frase  
Shelly Fredson & Maury Pasternack  
Dan & Deb Freund  
Vicki Funne Reed & Mark Reed  
Warren Gallagher & Stella Pagonis  
Fritz & Nancy Geske  
Dorothy Gilbertson  
Susan & John Glenz  
Jeff & Tess Goodwin  
Sue & David Gordon  
Ann & David Gordon  
John & Vicki Graaskamp

Brian & Tara Graff  
Pat & Gary Gray  
Jeff & Cheryl Guettinger  
John & Lynn Gunderson  
Garry & Sonia Hageness  
Joan Hamblin & David Schifeling  
Sarah Harder  
Kenneth & Eva Heintz  
William & Patricia Henke  
Mark Henke & Wendy Sheasby  
Patty & Jeff Henry  
Lisa Herrmann & Jane Schley  
Dr. & Mrs. William Heth & Jeanie Lubinsky  
Dr. & Mrs. Ed & Beth Hicks  
Joseph & Melva Hisrich  
Ron Hoepner  
Richard & Pat Horecki  
David Ihle  
Rick & Judy Israel  
Marilyn Jaskot  
J Kevin & Janet Johnson  
Jeff & Karen Jones  
Jack & Sally Kaiser  
Ron & Mary Keezer  
Betsy Kell & John Steensland  
Jeanette Kelly  
Cheryl Kern-Simirenko  
Jan Kippenhan  
Paula Kleintjes Neff & Terry Neff in  
memory of Birdell Snudden  
Jerome & Carol Knabe  
Joe & Bonnie Knight  
John & Deborah Konkel  
Dave & Linda Kragness  
Denise & Nick Krajewski  
Gary & Opal Kunz  
Mary & Thorsten Landwehr  
Daniel & Mary Leibham  
Dr. & Mr. Jill & Ned Lenhart  
Christine & Tom Levenhagen  
Christopher & Jana Lind  
Lynne Lindbo  
Kathryn Lindsay  
John & Jane Lokken  
Nancy & Robert Longdo  
Ted & Lisa Ludwig  
Kristi Lund  
David Lundberg

Richard Magyar & Lyria Palas  
Sharon & Jim Manz  
Clint & Brianne Markin  
Keith & Alison Martin  
Donald & Leatrice Mathison  
Bill & Cathy McCann  
James & Karen McCrady  
Thomas & Lucie McGee  
Pat McKearn & Richard Smith in memory  
of James Olson  
Nancy McNutt  
Margaret & John Melrose  
Patricia & David Mertens  
Bob Meyers  
Thomas Misfeldt & Hon. Lisa Stark  
Ed & Sue Mishefske  
Karen & Daniel Mittag  
Matthew & Elizabeth Monarski  
Emily & Gregg Moore  
Bert & Susan Moritz  
Joe & Joy Motto  
Marlin & Lois Mueller  
Jim & Peggy Murray  
Sarah & Greg Newman  
Co-Op Credit Union  
Vinay & Angie Nijhawan  
Ronald & Yvonne Nixdorf  
Ed & Carol Nogosek  
Martha & Michael O'Halloran in memory of  
Frank Schemberger  
Bill Olson  
Shirley Olson  
Imogene Olson  
Marlo & Beverly Orth  
Sandra & David Packard  
Ann & John Paddock  
Joyce & Joe Palzkill  
Sue & Doug Pearson  
Dan & Cari Pekol  
Dr. Suzette Peltier & Jon Thorpe  
Dianne & Ron Powers  
Kathy Prentice  
Pat Prissel  
Gene & Carol Pulvermacher  
Steve & Lois Raether  
Pam & Scott Rasmussen  
Michael & Jacqueline Rentzepis



## Endowment in action

The Endowment Fund supplied the necessary funds of \$7,000 in order to establish an AmeriCorps position at BCR. AJ Leiden, Volunteer Coordinator through Marshfield Clinic. Volunteer WI AmeriCorps, has been a tremendous resource to the reserve in evaluating the duties of the Volunteer Coordinator position. He was able to transition tracking volunteer hours to our new database, establish new volunteer positions, write training documents for new volunteers and much more. In 2016 Beaver Creek was able to utilize more than 280 volunteers for a total of over 4,300 volunteer hours!

# 2016 ENDOWMENT CAMPAIGN CONTRIBUTIONS

Helen Rizzi  
 Timothy & Dianne Robertson  
 Kyle & Debra Rogers  
 Drs. Stephen & Carla Rogers  
 Joseph & Evelyn Rohrer  
 Mary Rosolack  
 David & Susan Rowe  
 JoAnn Rucker  
 Kelvin & Shirley Ruesch  
 Ken & Vickie Schafer  
 Jeanette Scheuermann  
 Anna Lee Schifeling  
 Jean Schlieve  
 Bob and Carmen Schmidt & David Peters  
 Tony & Nancy Schuster  
 Judy & Jim Schwarzmeier  
 J. Roger Selin  
 John & Katie Selz  
 Beverly & John Shelley

Kim Shult  
 Glenn & Ardath Solsrud  
 Catherine & Dale Southard in memory of  
 Birdell Snudden  
 Stan & Marie Spaeth  
 Nancy & Michael Spak  
 Elizabeth & Mitchell Spencer  
 Beverly and Kevin Stelljes  
 Patty Stoffers  
 Randall & Lori Stutzman  
 Ken & Terre Sullivan  
 Mel & Sally Sundby  
 Dave Swan  
 Tom Taylor  
 Cheryl Thiede  
 J. Scott Thiel  
 William & Barbara Thiel  
 Del Thorson  
 Terry & Judy Valen  
 Martin & Karen Voss

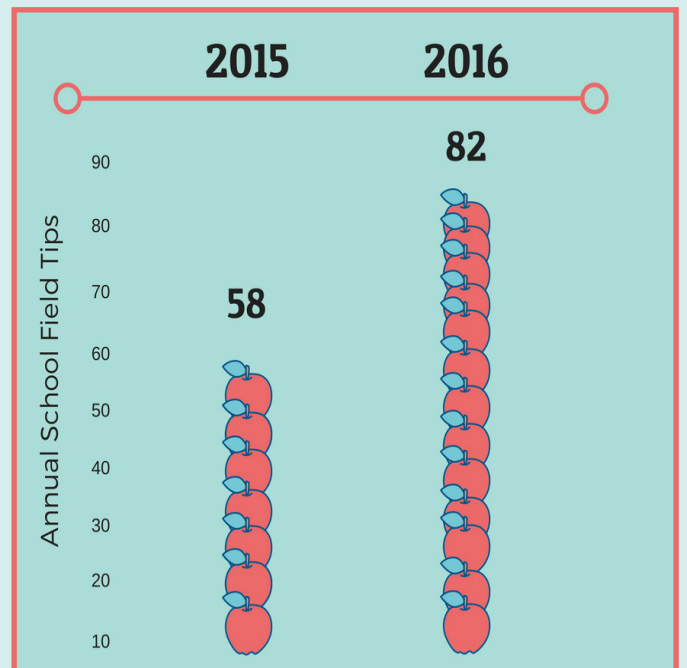
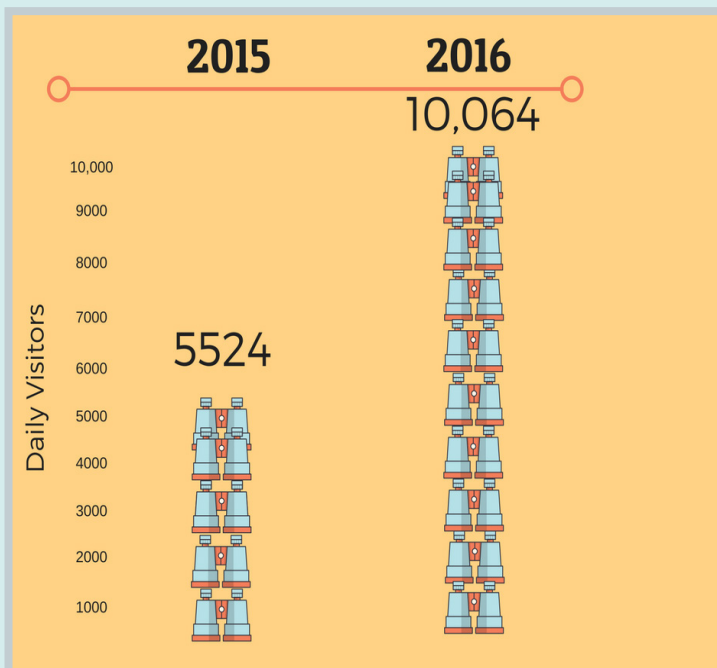
Jeff & Janet Voss  
 Johanna Warloski  
 Augie Wirkus  
 Olga Wise  
 Eleanor Wolf  
 Becky and Dave Wood  
 Keith & Deb Zehms  
 Richard Ziemann  
 Larry Zorn

Matching gifts from  
 Mayo Clinic Health System  
 Nordson Corp



## Impact of Endowment Contributions on BCR Daily Operations

The Scheels Discovery Room renovation project, to which the BCR Endowment fund was the second largest contributor, was a huge catalyst for growth in 2016 as evidenced by the increase in daily visitors and school field trips.





# What does your donation look like?

*Thanks to your generosity Beaver Creek Reserve is able to connect people with nature in so many ways.*



We were so impressed with the Wise Nature Center! We stopped for a visit with our granddaughters during MEA Break. The Scheels Discovery Room is a gem and the storybook trail was delightful. Thanks for a fun fall outing!

Char Voigt



Jim and Ruth were very friendly. Great experience for all the Elk Mound 2nd graders!!!! They had a blast.

Loretta Young

