



# 2023 Summer Camp Registration

Registration for our 2023 camps opens **Saturday, March 11 at 8:00 a.m.** This year, we are using a *new* registration software that is more user friendly and will save you time at checkout.

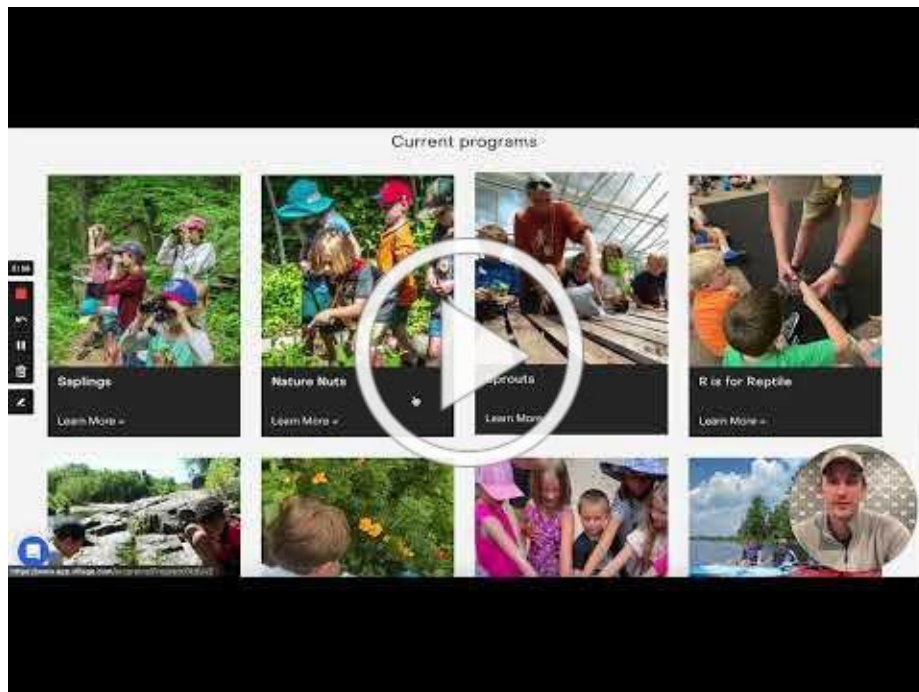
This new and simpler registration process is thanks to our partnership with [Village](#), a website that explores out of school opportunities in the Chippewa Valley! All of our camps will be listed on Village starting March 11 at 8:00 a.m. Access the link to our camp catalog on our [website](#).

**To save you time at checkout, we ask that you set up your account and your camper(s) profiles prior to registration opening!** This will not only save you time at checkout, but it will also help you get your camper(s) in the camps they want this summer.

---

## Setting Up Your Account

Watch the video below to learn how to set up your account and create your camper profiles.



## Step by Step

1. Go to [www.app.village.com/providers/bcr](http://www.app.village.com/providers/bcr)
2. Click 'Log in' in the top right corner.
3. If you have an account already, type in your phone number. If you do not have an account, click 'Register' at the bottom.
4. Click 'As a Parent' then type in your phone number and 'Create Account'.
5. You will receive a code sent **via SMS** to verify your log in each time.
6. Once you're logged in, click your account drop down in the top right corner, and click on 'My Family'.
7. To set up your family member & camper profiles, click 'My Family' on the dashboard, and 'Add new learner'.
8. From here, you will create each camper's profile.
9. When creating a profile, please include **all health information** as well as **all additional information**. The additional information asks for school districts and student ID number which will come in handy at registration. If you did not fill out the additional information section, you will not receive the **FREE** camp if you're signing up with a partnered district (Eau Claire, Altoona, and Augusta).
10. Once a profile is complete, click 'Add new learner' and continue to add new learners for all your campers.
11. To access BCR summer camps, click on the registration link on our [website](#) to see our camp catalog!
12. Once the link is live, you can access our camps. Click on the camp & session you would like your camper(s) to attend.
13. Under 'Upcoming session,' click the 'Select participants' drop down menu and select which camper(s) you would like to register.
14. Once you confirm the participant and fill out payment details, click 'Confirm & Pay'.

If you would like to set up your payment details as well, you can also do this prior to registration opening! Click your account in the top right corner and select 'Payment methods' from the dashboard to save even more time at checkout.



***Thank you for being patient with us as we try this new system!*** We're hoping that by creating your accounts and setting up your camper profiles prior to registration opening will save you time at checkout.

If you have questions about registration, or creating your account and adding profiles for your campers, please contact us during our open hours at (715) 877-2212 or [bcr@beavercreekreserve.org](mailto:bcr@beavercreekreserve.org).

**Registration closes June 1**